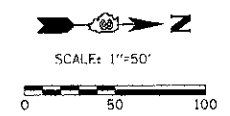


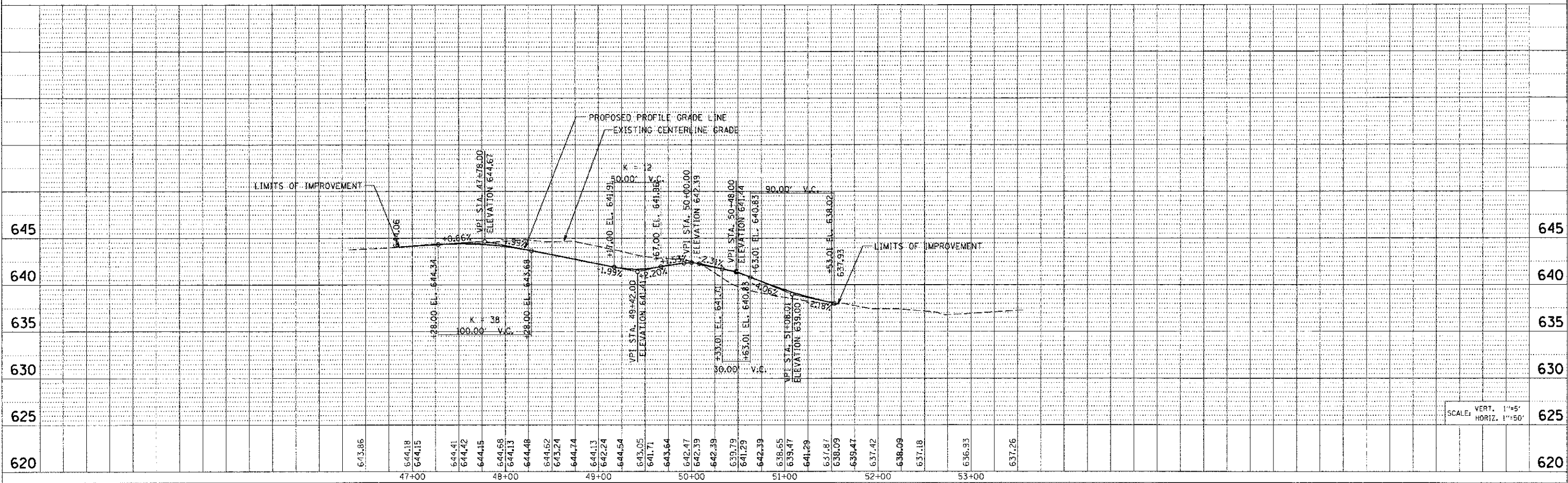
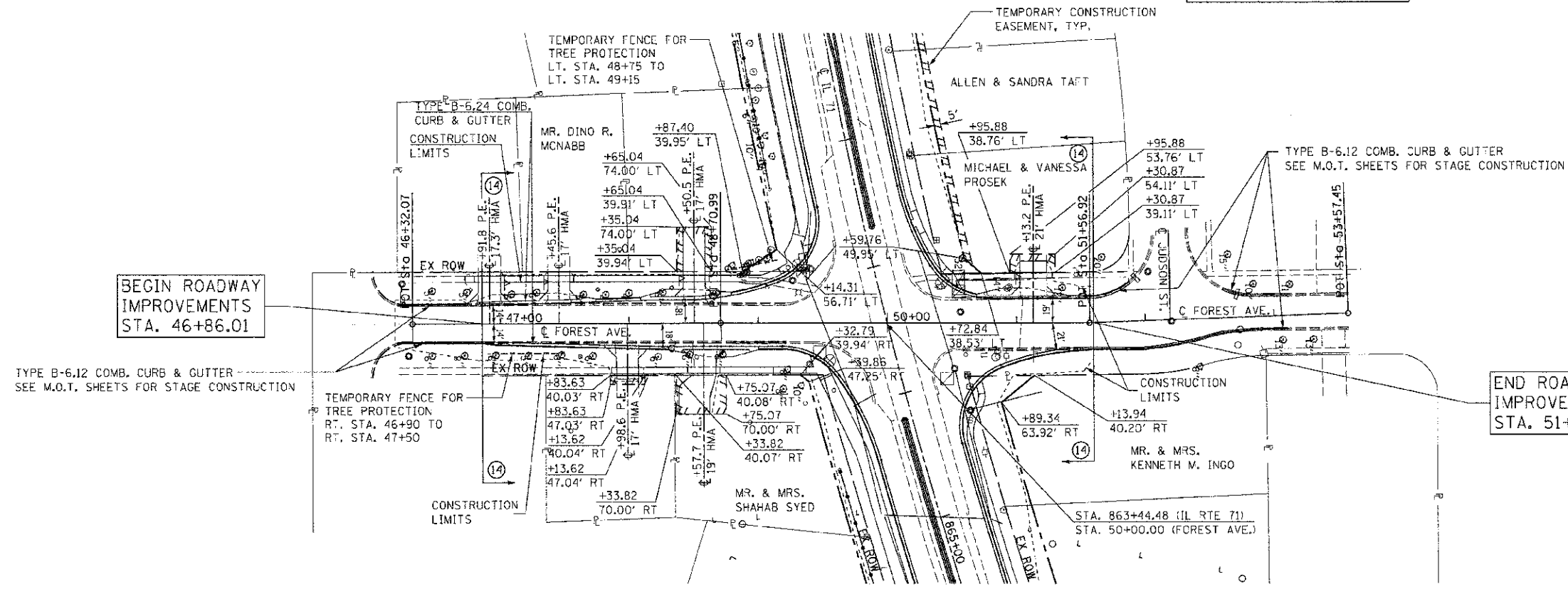
F.A.P. RTE.	SECTION	COUNTY	TOTAL SHEETS	SHEET NO.
311	(1-1)R	KENDALL	514	108
STA. 46+86.01		TO STA. 51+59.17		
FED. ROAD DIST. NO.		ILLINOIS FED. AID PROJECT		



FOR STATION & OFFSET CALLOUTS AT NEW ROAD TAPERS AND RADII SEE INTERSECTION DETAIL SHEETS 334 TO 336

BEGIN ROADWAY IMPROVEMENTS STA. 46+86.01

END ROADWAY IMPROVEMENTS STA. 51+59.17



TUG PROJ. #3102914
 PLOT DATE # 7/5/2012
 FILE NAME = p:\civil\1\add1.dwg\3\onwego\pkase 1\A\PL71-14.dgn

SCALE: VERT. 1"=5'
HORIZ. 1"=50'