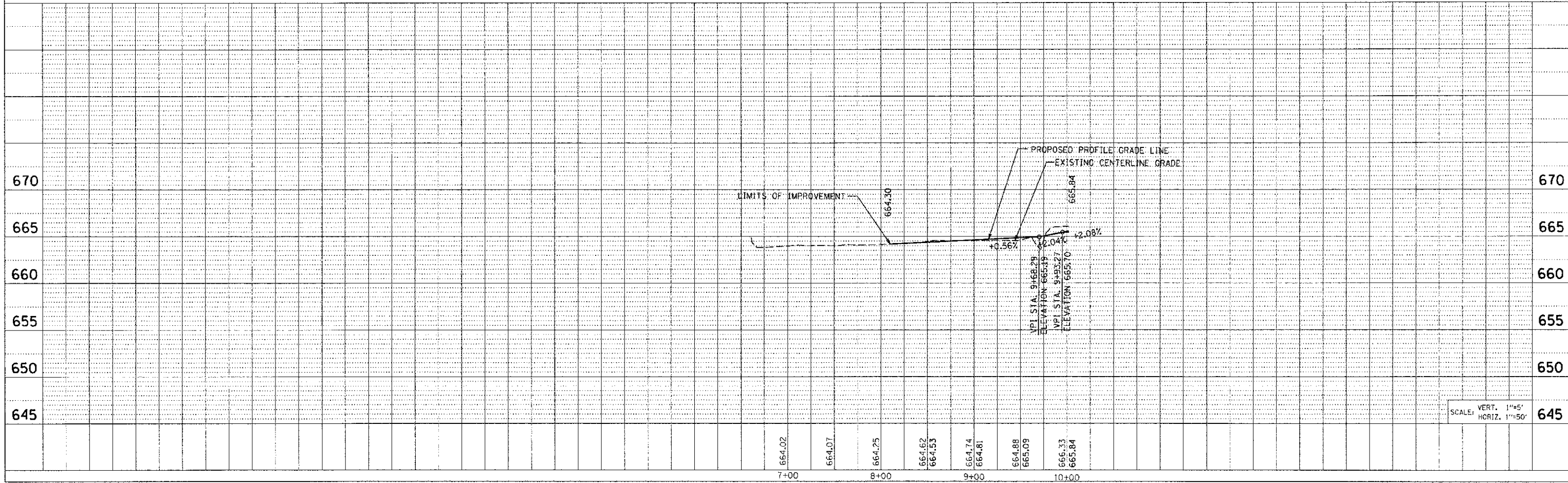
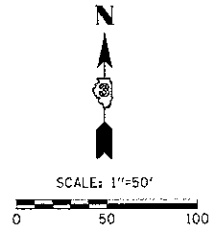
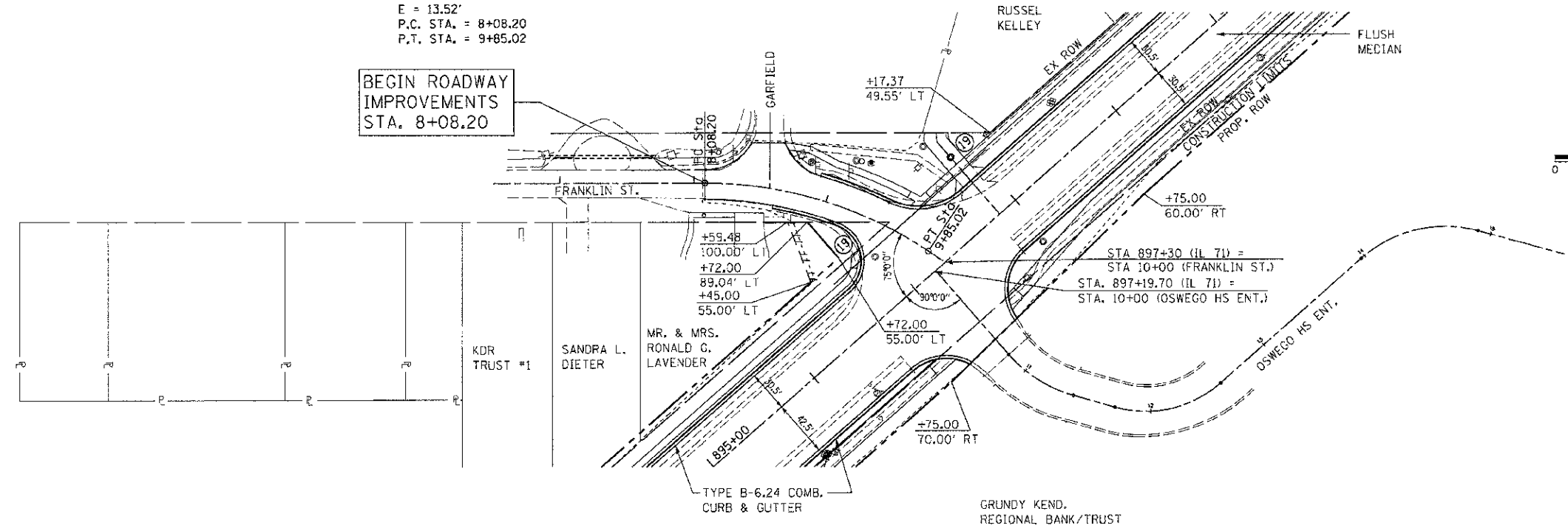


F.A.P. RTE.	SECTION	COUNTY	TOTAL SHEETS	SHEET NO.
311	(1-DR)	KENDALL	514	111
STA. 8+08.20		TC STA. 10+00		
FED. ROAD DIST. NO.	ILLINOIS	FED. AID PROJECT		

PROP. CURVE FRANKLIN-1  
 PI STA. = 8+99.26  
 $\Delta = 33^\circ 46' 16''$  (RT)  
 $D = 19^\circ 05' 55''$   
 $R = 300.00'$   
 $T = 91.06'$   
 $L = 176.83'$   
 $E = 13.52'$   
 P.C. STA. = 8+08.20  
 P.T. STA. = 9+85.02

FOR STATION & OFFSET CALLOUTS AT NEW ROAD TAPERS AND RADII SEE INTERSECTION DETAIL SHEET 343

BEGIN ROADWAY IMPROVEMENTS STA. 8+08.20



THE UPCHURCH GROUP, INC., 123 NORTH 15TH STREET, MATTOON, ILLINOIS 61938, (217) 235-3177  
 PLOT DATE: 7/5/2012  
 FILE NAME: p:\kenneth\idms\chm3\oswego\chm3\PI 71-17-FRANKI.mxd