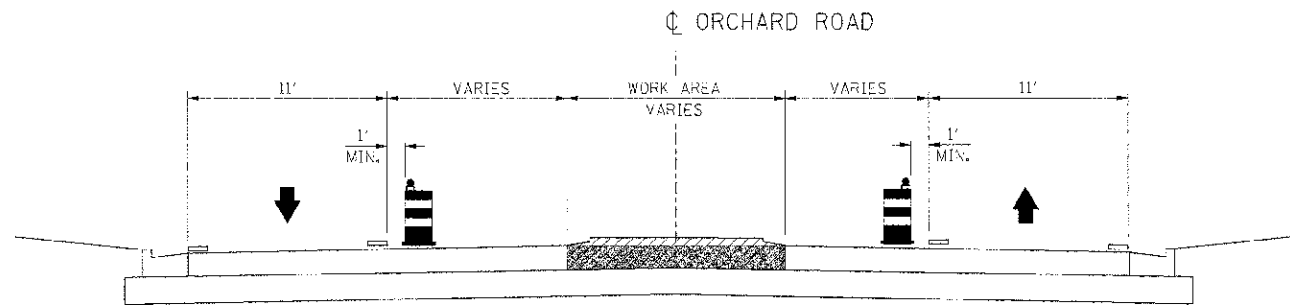









F.A.P. R.T.E.	SECTION	COUNTY	TOTAL SHEETS	SHEET NO.
311	1-D R	KENDALL	614	137
STA.	TO STA.			
FED. ROAD DIST. NO.		ILLINOIS FED. AID PROJECT		



TYPICAL SECTION - STAGE 6

(LOOKING NORTH)  
STA. 63+70 TO STA. 70+33

**LEGEND**

-  VERTICAL PANEL
-  DRUM WITH STEADY BURNING LIGHT
-  TRAFFIC FLOW
-  PREVIOUS STAGE CONSTRUCTION
-  CURRENT STAGE CONSTRUCTION
-  PAVEMENT REMOVAL
-  TEMPORARY PAVEMENT MARKING

REVISIONS	
NAME	DATE

ILLINOIS DEPARTMENT OF TRANSPORTATION  
**MAINTENANCE OF TRAFFIC**  
**STAGE 6**  
**TYPICAL SECTIONS - SIDEROADS**

SCALE: NONE  
DATE: 7/3/2012  
DRAWN BY: AAD  
CHECKED BY: RC

IE PROJ: 6596025  
 PLOT DATE: 7/3/2012  
 FILE NAME: G:\666625\CAD\11\11401\_15.6025.dwg