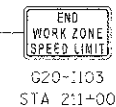
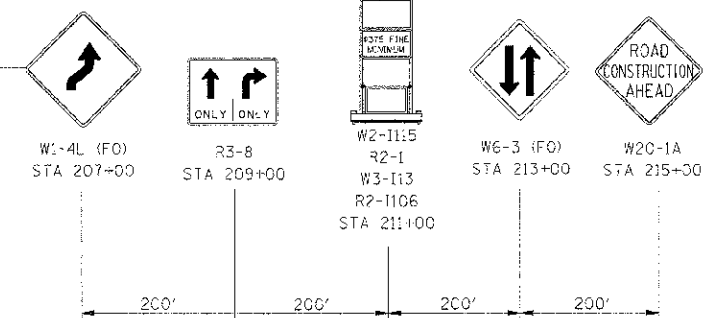
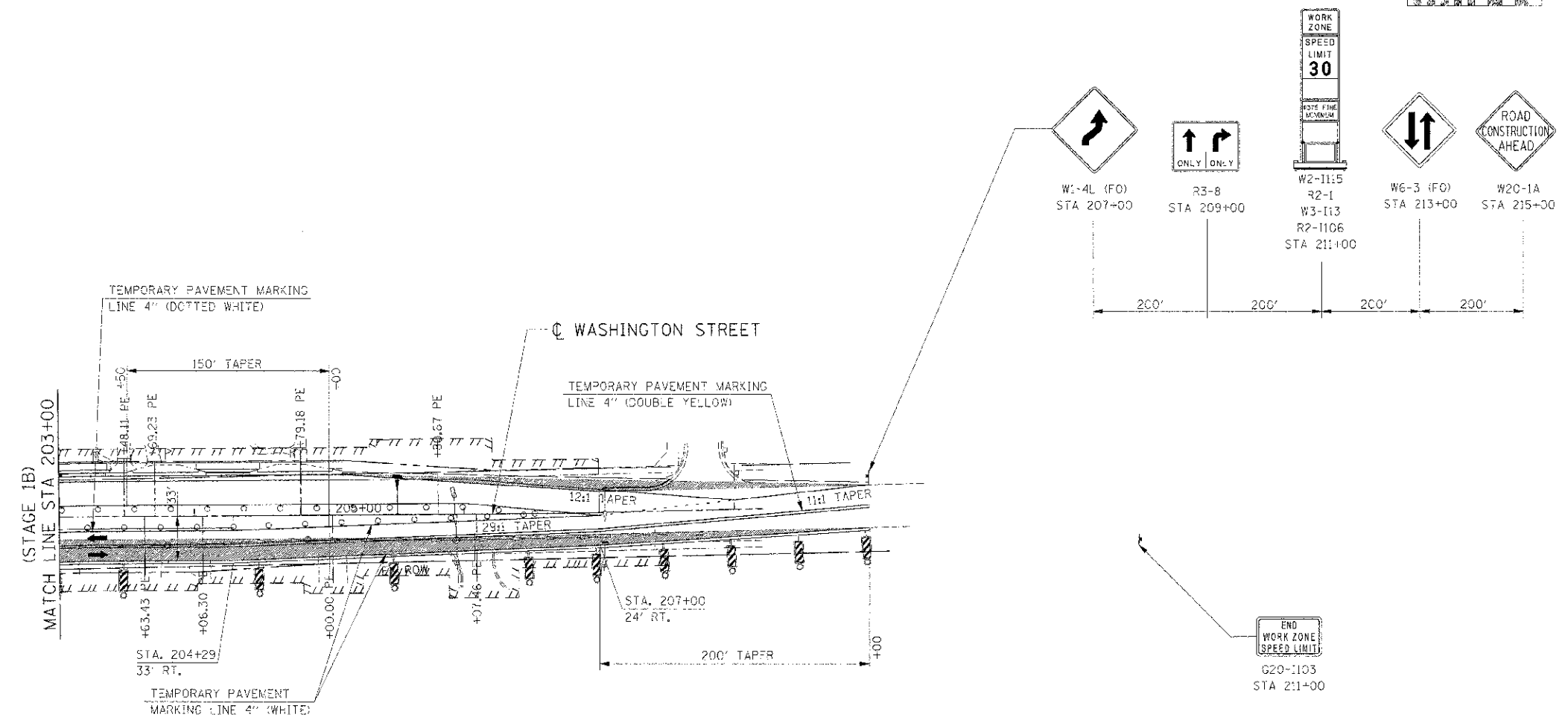


F.A.P. RTE.	SECTION	COUNTY	TOTAL SHEETS	SHEET NO.
311	(1-D) R	KENDALL	514	170
STA. 188+00 TO STA. 198+25				
FED. ROAD DIST. NO.		ILLINOIS FED. AID PROJECT		



LEGEND

- DRUM
- VERTICAL PANEL
- TYPE III BARRICADE
- TRAFFIC FLOW
- STAGE CONSTRUCTION
- TEMPORARY WIDENING / PAVEMENT

NOTE:

CONTRACTOR SHALL MAINTAIN ACCESS TO ENTRANCES AND SIDE ROADS AT ALL TIMES EXCEPT AS NOTED TO BE CLOSED.

REVISIONS	
NAME	DATE

ILLINOIS DEPARTMENT OF TRANSPORTATION
MAINTENANCE OF TRAFFIC
STAGE 1B WASHINGTON ST
STA 203+00 TO STA 209+00
 SCALE: 1"=50'
 DATE: 7/3/2012
 DRAWN BY: _____
 CHECKED BY: RG

IF PROJ # 66420
 PLOT DATE = 7/3/2012
 FILE NAME = G:\AS6625\CA0\1_71_40T_IB_22.SHT