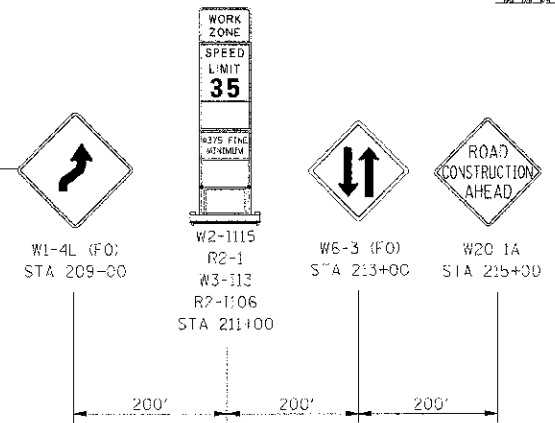
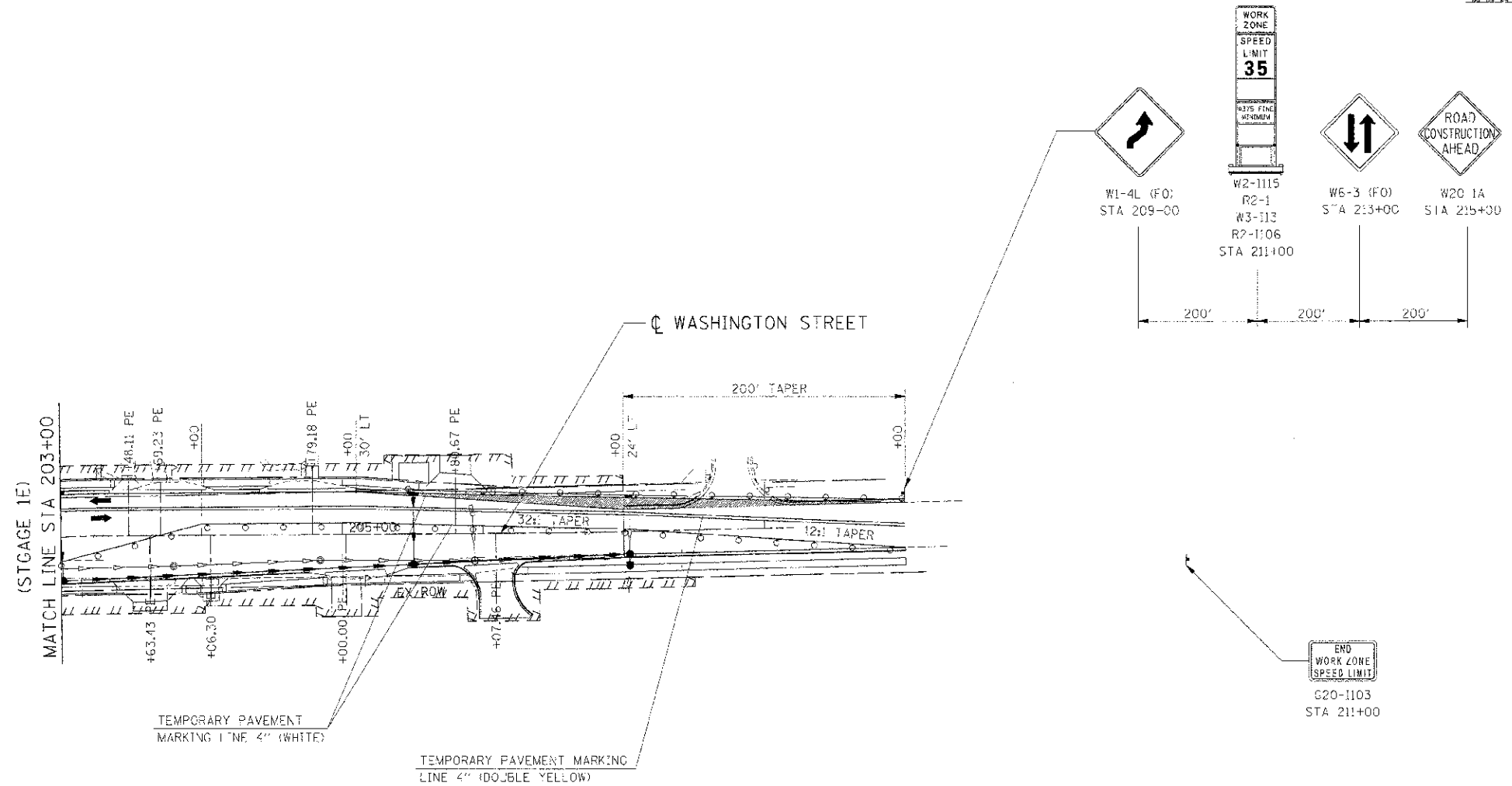
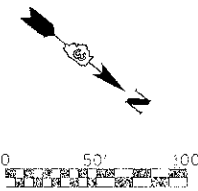


C.A.P. SITE	SECTION	COUNTY	TOTAL SHEETS	SHEET NO.
311	(1-1) R	KENDALL	514	176
STA. 188+00		TO STA. 198+25		
FED. ROAD DIST. NO.		ILLINOIS FED. AID PROJECT		



END WORK ZONE SPEED LIMIT  
G20-1103  
STA 211+00

**LEGEND**

- DRUM
- VERTICAL PANEL
- TYPE III BARRICADE
- TRAFFIC FLOW
- STAGE CONSTRUCTION
- TEMPORARY WIDENING / PAVEMENT

**NOTE:**  
CONTRACTOR SHALL MAINTAIN ACCESS TO ENTRANCES AND SIDE ROADS AT ALL TIMES EXCEPT AS NOTED TO BE CLOSED.

REVISIONS	
NAME	DATE

ILLINOIS DEPARTMENT OF TRANSPORTATION  
**MAINTENANCE OF TRAFFIC  
STAGE 1E WASHINGTON ST  
STA 203+00 TO STA 209+00**  
SCALE: 1"=50'  
DATE: 7/3/2012  
DRAWN BY:  
CHECKED BY: RG

IE PROJ: 66420  
PLOT DATE: 7/3/2012  
FILE NAME: G:\66420\CAD\CIVIL\71\HOT\_1E\_22.DWT