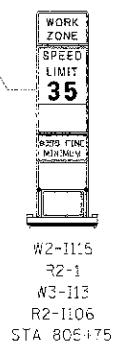
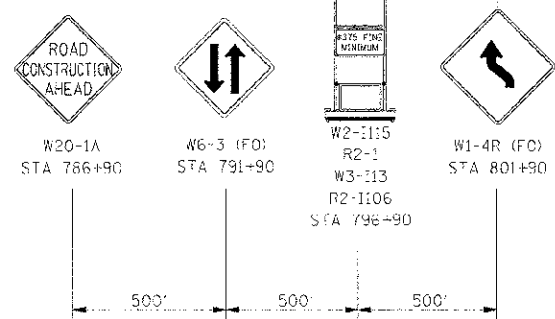
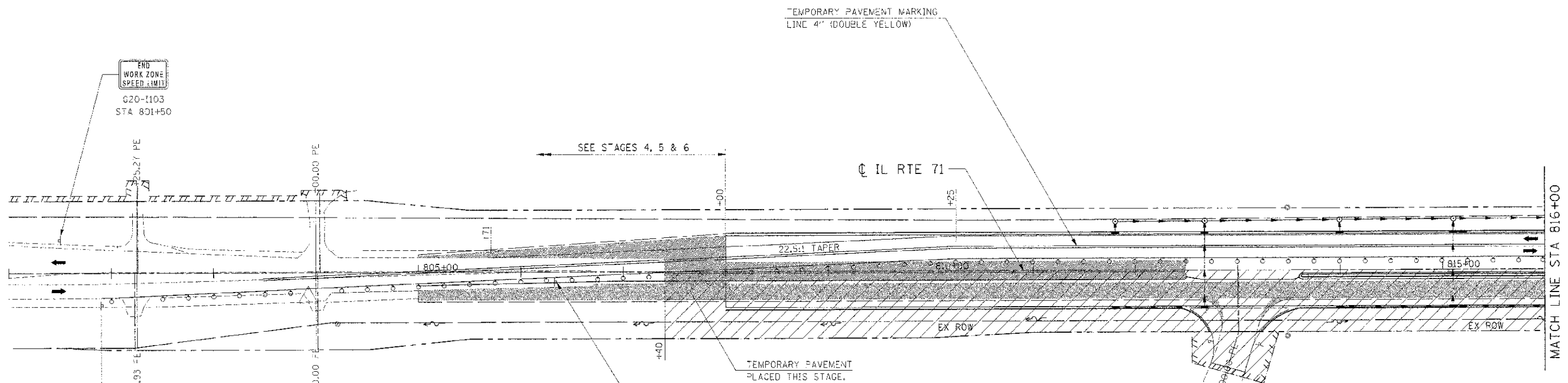
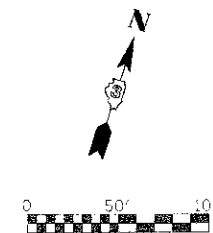


F.A.P. RTE.	SECTION	COUNTY	TOTAL SHEETS	SHEET NO.
311	(1-1) R	KENDALL	5:4	177
STA. 801+00		TO STA. 816+00		
FED. ROAD DIST. NO.	ILLINOIS	FED. AID PROJECT		



LEGEND

- DRUM
- VERTICAL PANEL
- TYPE III BARRICADE
- TRAFFIC FLOW
- STAGE CONSTRUCTION
- TEMPORARY WIDENING / PAVEMENT

REVISIONS	
NAME	DATE

ILLINOIS DEPARTMENT OF TRANSPORTATION
MAINTENANCE OF TRAFFIC
STAGE 2 (IL RTE 71)
STA 801+00 TO STA 816+00
 SCALE: 1"=50'
 DATE: 7/3/2012
 DRAWN BY: AAD
 CHECKED BY: RG

NOTE:
 CONTRACTOR SHALL MAINTAIN ACCESS TO ENTRANCES AND SIDE ROADS AT ALL TIMES EXCEPT AS NOTED TO BE CLOSED.

IE PROJ: 66420
 PLOT DATE: 7/3/2012
 PLOT NAME: G:\CONTRACTS\66420\1\HOT_2_813.SHT