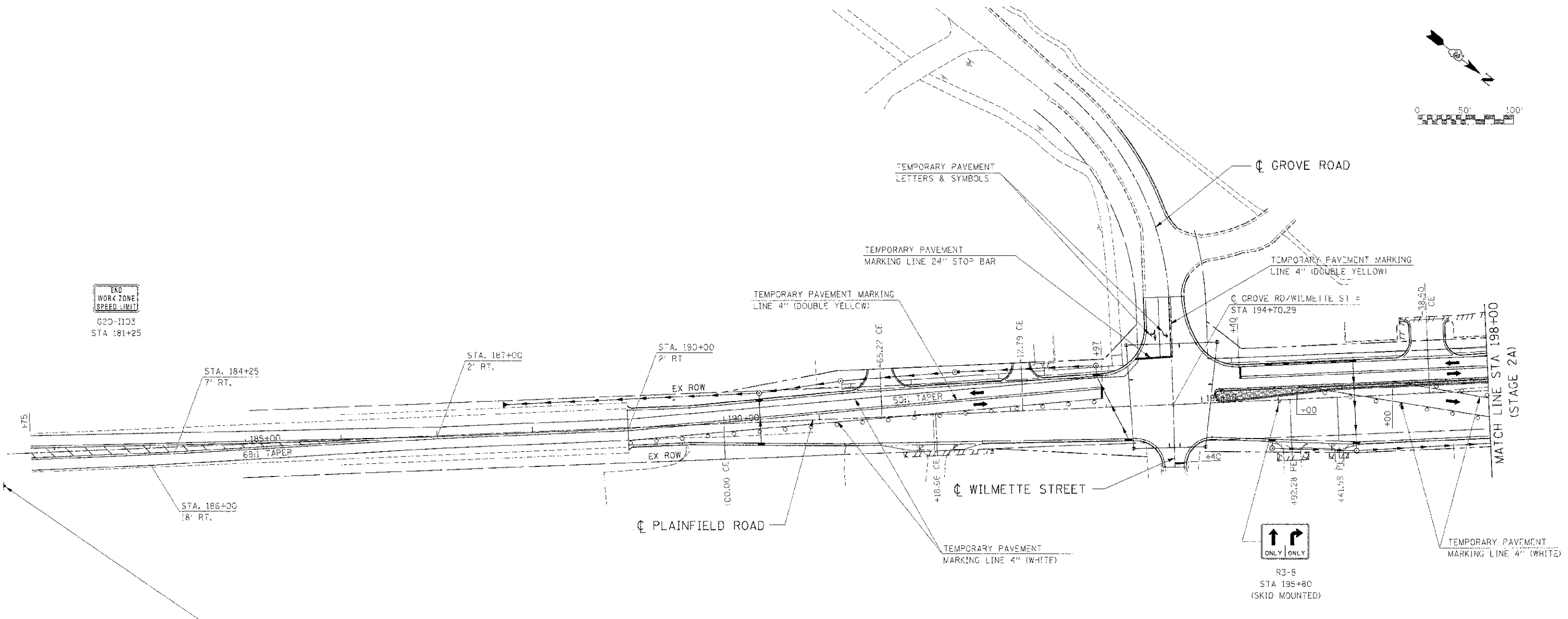
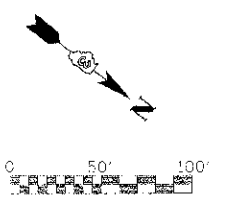
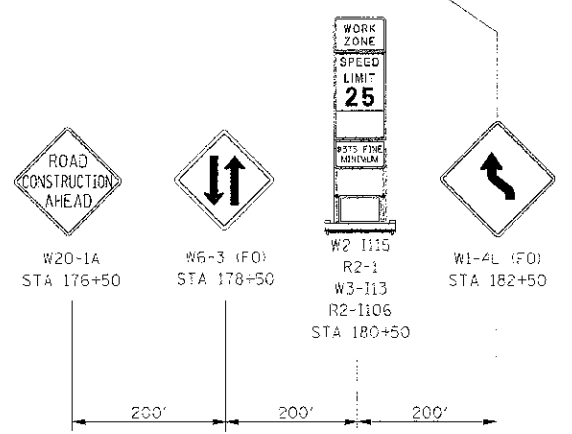


F.A.P. RTE.	SECTION	COUNTY	TOTAL SHEETS	SHEET NO.
314	Q-21 R	KENDALL	514	192
STA. 188+00		TO STA. 198+25		
FED. ROAD DIST. NO.		ILLINOIS FED. AID PROJECT		



END WORK ZONE SPEED LIMIT
620-1103
STA 181+25

R3-8
STA 195+80
(SKID MOUNTED)



LEGEND

- DRUM
- VERTICAL PANEL
- TYPE III BARRICADE
- TRAFFIC FLOW
- STAGE CONSTRUCTION
- TEMPORARY WIDENING / PAVEMENT

NOTE:
CONTRACTOR SHALL MAINTAIN ACCESS TO ENTRANCES AND SIDE ROADS AT ALL TIMES EXCEPT AS NOTED TO BE CLOSED.

REVISIONS	
NAME	DATE

ILLINOIS DEPARTMENT OF TRANSPORTATION
**MAINTENANCE OF TRAFFIC
STAGE 2A PLAINFIELD ROAD
STA 188+00 TO STA 198+00**
SCALE: 1"=50'
DATE: 7/3/2012
DRAWN BY:
CHECKED BY: RC

IE PROJ: 605025
 PLOT DATE: 7/3/2012
 FILE NAME: G:\S\605025\LD\A\171.MDT_04_21.DWT