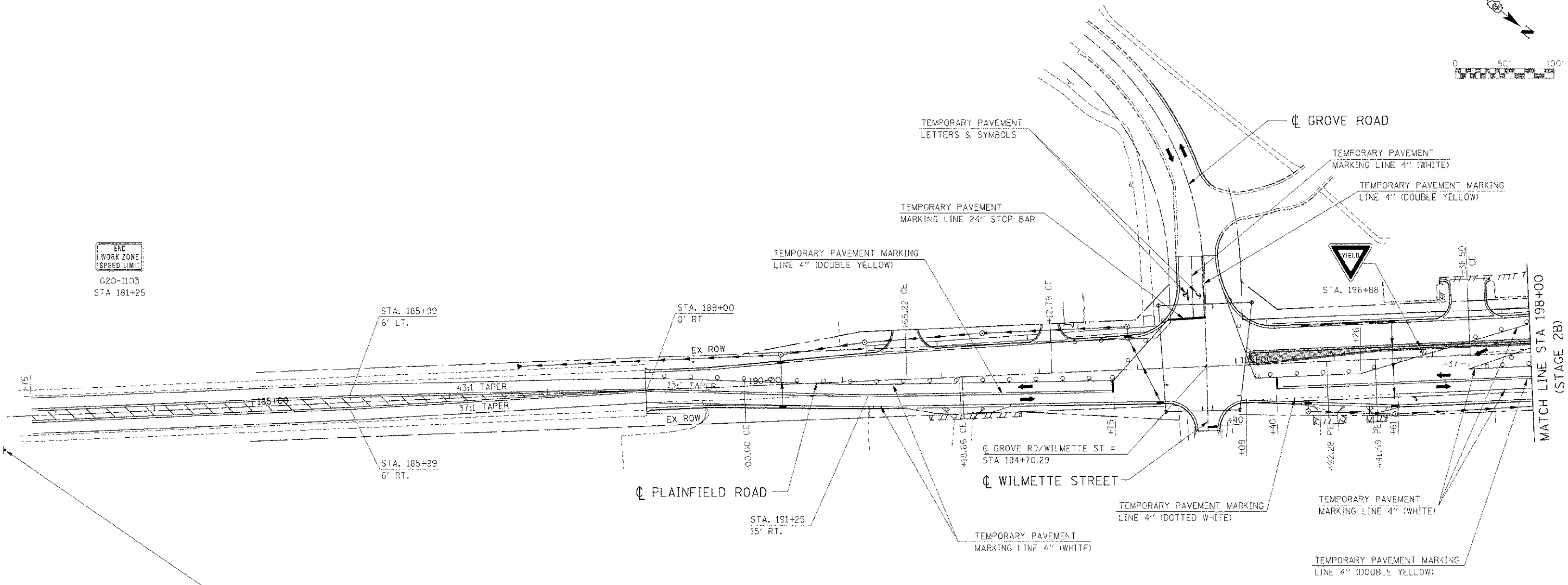
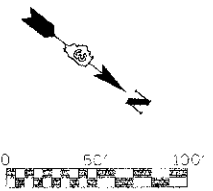
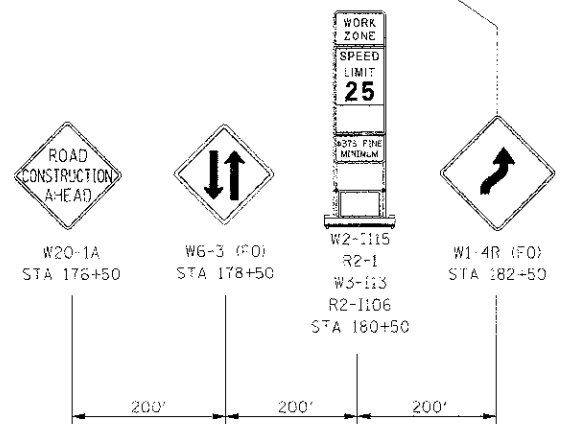


P.A.P. RTE.	SECTION	COUNTY	TOTAL SHEETS	SHEET NO.
311	(1-1) R	KENDALL	514	194
STA. 188+00		TO STA. 196+25		
FED. ROAD DIST. NO.		ILLINOIS FED. AID PROJECT		



END WORK ZONE SPEED LIMIT
G20-1103
STA 181+25



LEGEND

- DRUM
- VERTICAL PANEL
- TYPE III BARRICADE
- TRAFFIC FLOW
- STAGE CONSTRUCTION
- TEMPORARY WIDENING / PAVEMENT

NOTE:

CONTRACTOR SHALL MAINTAIN ACCESS TO ENTRANCES AND SIDE ROADS AT ALL TIMES EXCEPT AS NOTED TO BE CLOSED.

REVISIONS	NAME	DATE

ILLINOIS DEPARTMENT OF TRANSPORTATION

**MAINTENANCE OF TRAFFIC
STAGE 2B PLAINFIELD ROAD
STA 188+00 TO STA 198+00**

SCALE: 1"=50'
DATE: 7/3/2012

DRAWN BY
CHECKED BY: RG

IE PROJ: 585926
PLOT DATE: 7/3/2012
FILE NAME: G:\ASSETS\66420\11\11_01_25_21.SHT