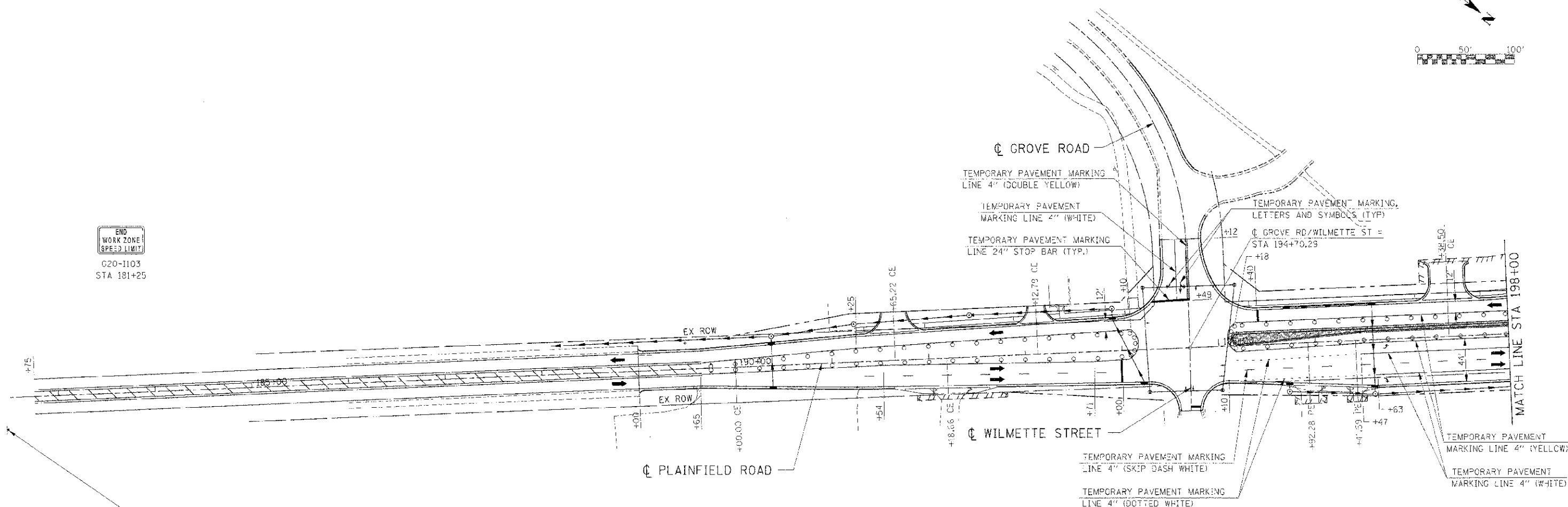
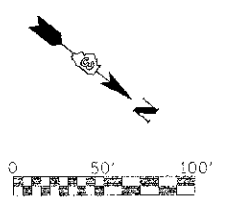
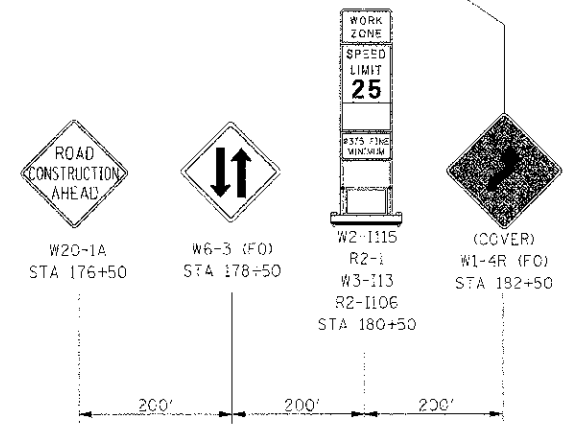


F.A.P. STATE:	SECTION:	COUNTY:	TOTAL SHEETS:	SHEET NO.:
311	1-1: R	KENDALL	514	205
STA. 185+00	TO STA. 198+25			
FED. ROAD DIST. NO. ILLINOIS		FED. AID PROJECT		



END WORK ZONE SPEED LIMIT
 020-1103
 STA 181+25



LEGEND

- DRUM
- VERTICAL PANEL
- TYPE III BARRICADE
- TRAFFIC FLOW
- STAGE CONSTRUCTION
- TEMPORARY WIDENING / PAVEMENT

NOTE:
 CONTRACTOR SHALL MAINTAIN ACCESS TO ENTRANCES AND SIDE ROADS AT ALL TIMES EXCEPT AS NOTED TO BE CLOSED.

REVISIONS	
NAME	DATE

ILLINOIS DEPARTMENT OF TRANSPORTATION
**MAINTENANCE OF TRAFFIC
 STAGE 3 PLAINFIELD ROAD
 STA 188+00 TO STA 198+00**
 SCALE: 1"=50'
 DATE: 7/3/2012
 DRAWN BY: _____
 CHECKED BY: RC

LE: 08/02/12
 PL: 07/03/2012
 FILE NAME: G:\S\66420\DWG\171_P01_3_215.DWG