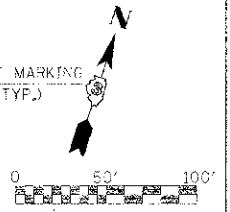
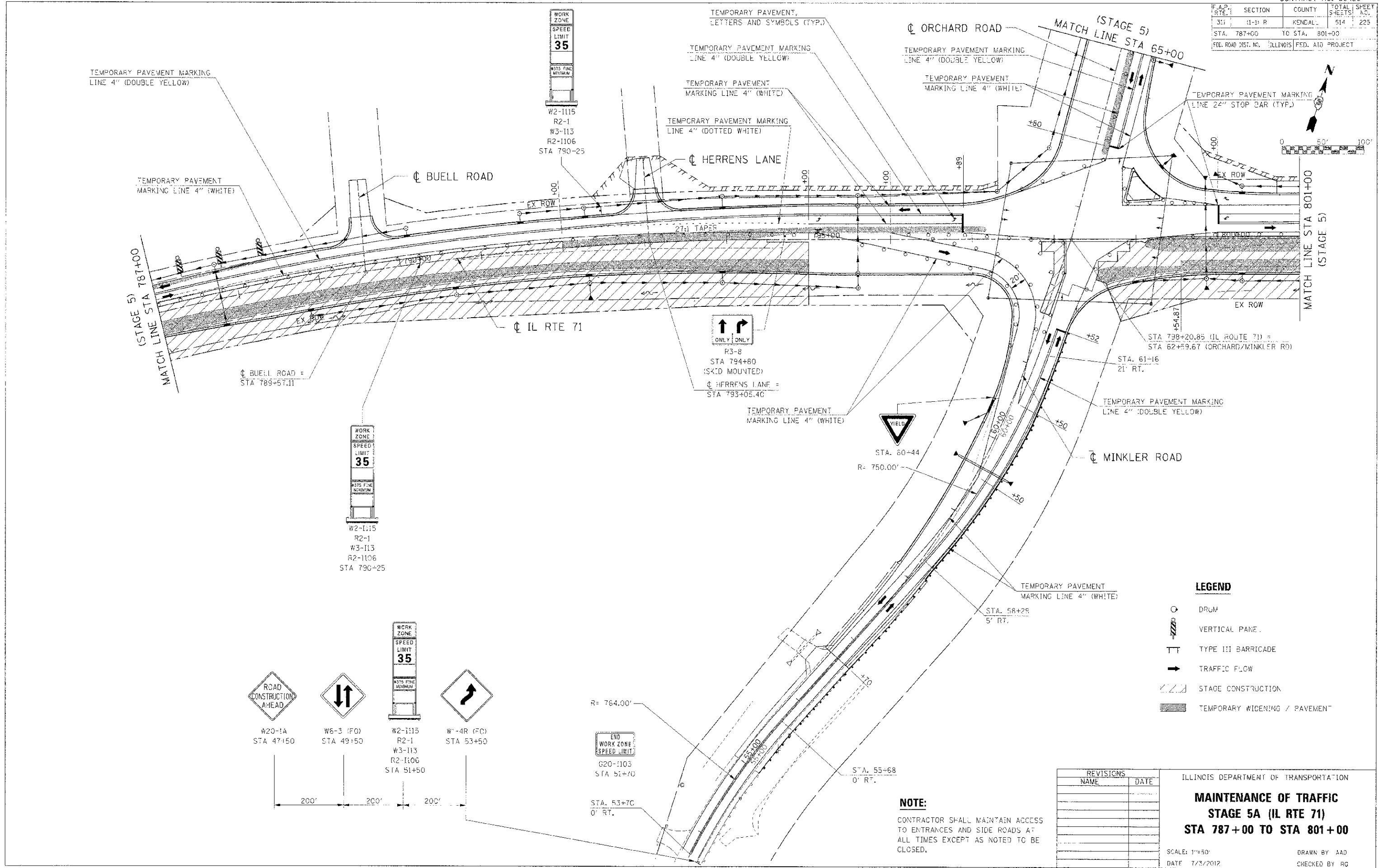


F.A.P. RTE.	SECTION	COUNTY	TOTAL SHEETS	SHEET NO.
311	(1-1) R	KENDALL	514	225
STA. 787+00		TO STA. 801+00		
FED. ROAD DIST. NO. ILLINOIS FED. AID PROJECT				



LEGEND

- DRUM
- VERTICAL PANE.
- TYPE III BARRICADE
- TRAFFIC FLOW
- STAGE CONSTRUCTION
- TEMPORARY WIDENING / PAVEMENT

REVISIONS	
NAME	DATE

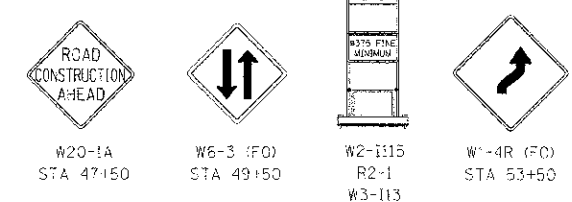
ILLINOIS DEPARTMENT OF TRANSPORTATION

**MAINTENANCE OF TRAFFIC
STAGE 5A (IL RTE 71)
STA 787+00 TO STA 801+00**

SCALE: 1"=50'
DATE: 7/3/2012

DRAWN BY: AAD
CHECKED BY: RG

NOTE:
CONTRACTOR SHALL MAINTAIN ACCESS TO ENTRANCES AND SIDE ROADS AT ALL TIMES EXCEPT AS NOTED TO BE CLOSED.



IE PROJ: 66420-5
 DATE: 7/3/2012
 FILE NAME: E:\AS\66420\DRAWING\71\WOT_5A_02.DWT