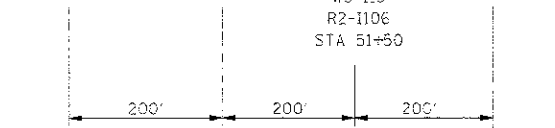
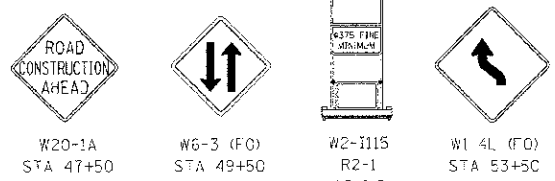
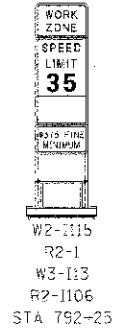
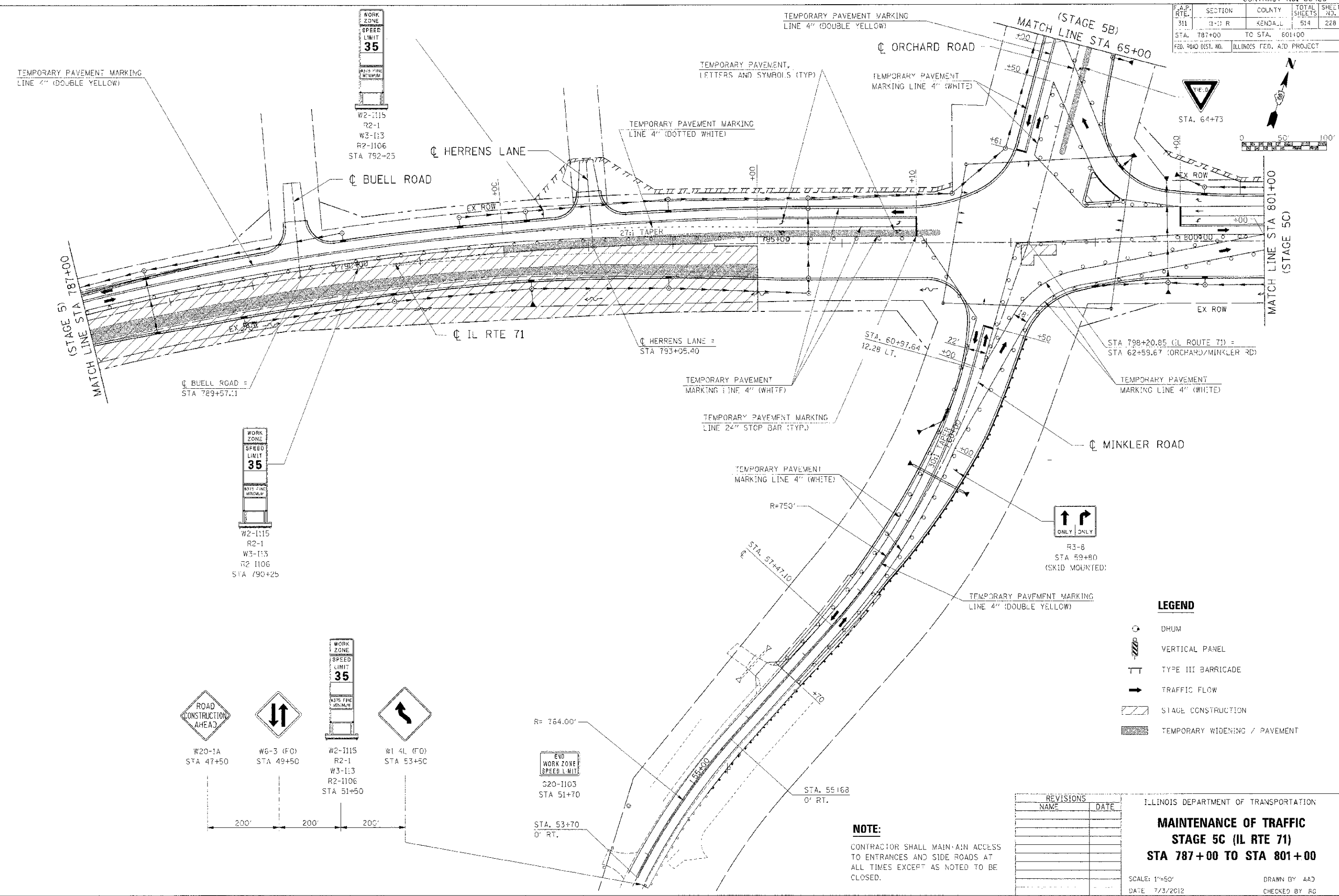


F.A.P. RTE.	SECTION	COUNTY	TOTAL SHEETS	SHEET NO.
311	(1-1) R	KENDALL	514	228
STA. 787+00		TO STA. 801+00		
FED. ROAD DIST. NO. ILLINOIS FED. AID PROJECT				



**LEGEND**

- DRUM
- VERTICAL PANEL
- TYPE III BARRICADE
- TRAFFIC FLOW
- STAGE CONSTRUCTION
- TEMPORARY WIDENING / PAVEMENT

**REVISIONS**

NAME	DATE

ILLINOIS DEPARTMENT OF TRANSPORTATION

**MAINTENANCE OF TRAFFIC  
STAGE 5C (IL RTE 71)  
STA 787+00 TO STA 801+00**

SCALE: 1"=50'  
DATE: 7/3/2012

DRAWN BY: AAD  
CHECKED BY: RG

IE PROJ: 66420  
 PLOT DATE: 7/3/2012  
 FILE NAME: G:\66420\CAD\IL 71\1015.DWG