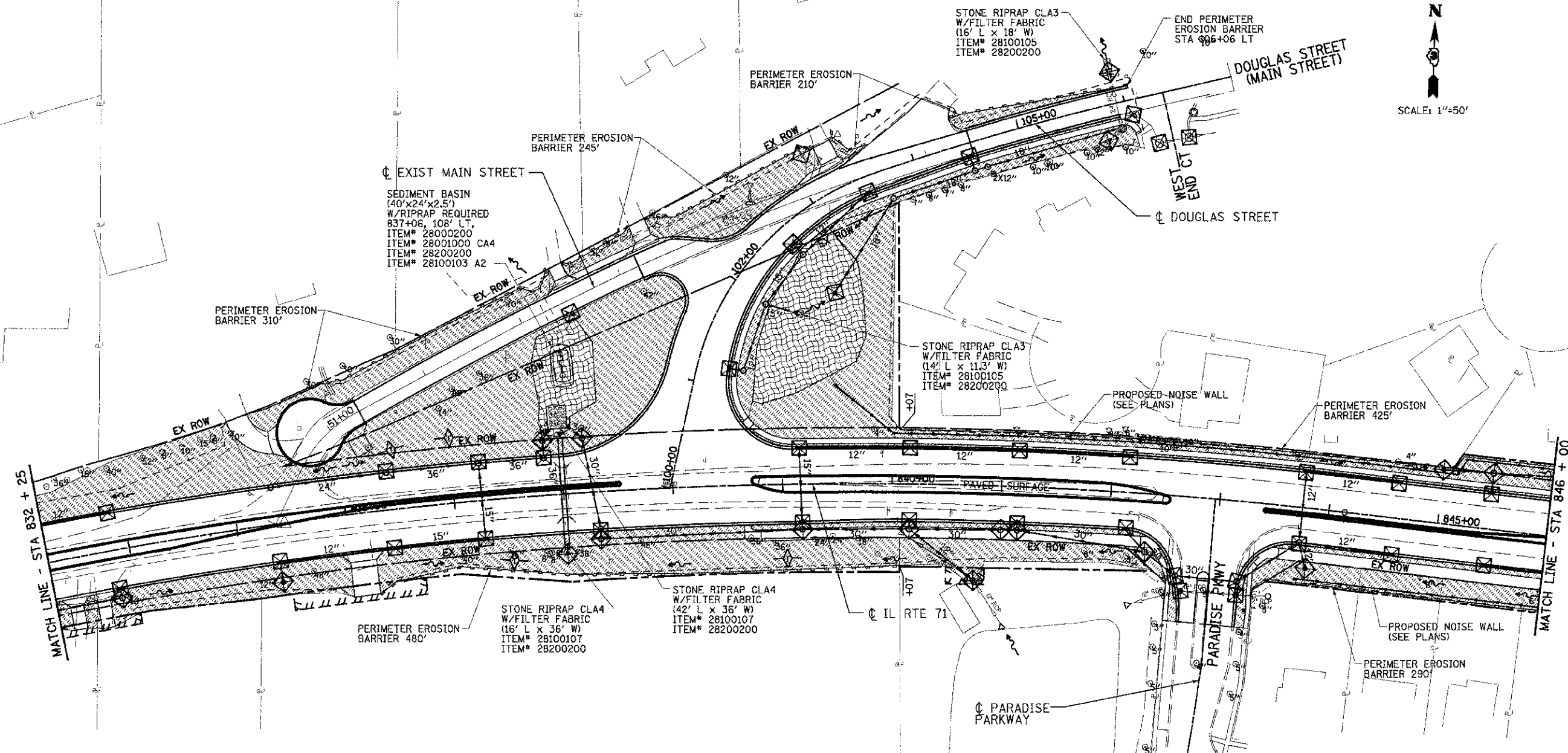
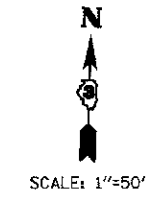


F.A.P. RTE.	SECTION	COUNTY	TOTAL SHEETS	SHEET NO.
311	(1-DR)	KENDALL	514	238
STA. 780+44.91		TO STA. 918+85.88		
FED. ROAD DIST. NO.		ILLINOIS FED. AID PROJECT		

EROSION LEGEND	
	PERIMETER EROSION BARRIER
	TEMPORARY DITCH CHECK
	INLET & PIPE PROTECTION
	SEDIMENT BASIN
	PROPOSED SURFACE FLOW
	STONE RIP RAP
	EROSION CONTROL BLANKET w/ SEEDING CLASS 3
	TURF REINFORCEMENT MAT
	SEEDING CLASS 2 OR CLASS 3
	SODDING, SALT TOLERANT



PRE-STAGE 1 TEMPORARY SEEDING:  
STA 832+25 RT TO STA 846+00 RT  
SEEDING, CLASS 7 - 0.781 ACRE  
MULCH, METHOD 1 - 0.781 ACRE

STAGE 1A, 1B&1C TEMPORARY SEEDING:  
MAIN STREET / DOUGLAS -  
51+00 LT TO AND STA 106+06 LT AND  
STA 103+00 RT TO STA 106+03 RT  
SEEDING, CLASS 7 - 0.356 ACRE  
MULCH, METHOD 1 - 0.356 ACRE

STAGE 1 SEEDING & SODDING:  
STA 832+25 LT TO STA 846+00 LT  
SEEDING, CLASS 3 - 0.343 ACRE  
SODDING, SALT TOLERANT - 5933.5 SQ YD  
TOP SOIL F & P 4 - 5933.5 SQ YD  
NITROGEN FERT NUTR - 94.1 LBS  
PHOSPHORUS FERT NUTR - 94.1 LBS  
POTASSIUM FERT NUTR - 94.1 LBS  
MULCH, METHOD 2 - 0.343 ACRE

STAGE 1A, 1B&1C TEMPORARY SEEDING:  
MAIN STREET / DOUGLAS -  
51+00 LT TO AND STA 106+06 LT AND  
STA 103+00 RT TO STA 106+03 RT  
SODDING, SALT TOLERANT - 1719.1 SQ YD  
TOP SOIL F & P 4 - 1719.1 SQ YD  
NITROGEN FERT NUTR - 21.3 LBS  
PHOSPHORUS FERT NUTR - 21.3 LBS  
POTASSIUM FERT NUTR - 21.3 LBS

STAGE 2 SODDING:  
STA 832+25 RT TO STA 846+00 RT  
SODDING, SALT TOLERANT - 3779.1 SQ YD  
TOP SOIL F & P 4 - 3779.1 SQ YD  
NITROGEN FERT NUTR - 46.9 LBS  
PHOSPHORUS FERT NUTR - 46.9 LBS  
POTASSIUM FERT NUTR - 46.9 LBS

STAGE 1 TEMPORARY SEEDING:  
STA 832+25 LT TO STA 846+00 LT  
SEEDING, CLASS 7 - 1.569 ACRE  
MULCH, METHOD 1 1.569 ACRE

STAGE 2 TEMPORARY SEEDING:  
STA 832+25 RT TO STA 846+00 RT  
SEEDING, CLASS 7 - 0.781 ACRE  
MULCH, METHOD 1 - 0.781 ACRE

**INTENDED EROSION AND LANDSCAPE SEQUENCE**

- 1) PLACE PERIMETER EROSION CONTROL BARRIER PRIOR TO COMMENCEMENT OF ANY WORK (SEE ARTICLE 280).
- 2) INSTALL TEMPORARY INLET PROTECTION AT ALL EXISTING AND PROPOSED STRUCTURES AND PIPE INLET AND OUTLETS WITHIN THE PROJECT LIMITS, AND IN ACCORDANCE WITH ARTICLE 280 OF THE IDOT STANDARD SPECIFICATION. (280001 INLET AND PIPE PROTECTION EACH).
- 3) CONSTRUCT EARTHWORK, DITCHES FIRST (MAXIMUM 10 ACRES DISTURBED AT ONE TIME PRIOR TO SEEDING - SEE ARTICLE 202 & 280).
- 4) INSTALL ALL DITCH EROSION ITEMS TO THE NEW DITCH CENTERLINES FROM OFFSETS IN SECTIONS (SEE CROSS SECTIONS)
- 5) PLACE AND MAINTAIN TEMPORARY AND PERMANENT EROSION CONTROL ITEMS FOLLOWING THE STAGED CONSTRUCTION PROCEDURE SHOWN IN THESE PLANS. SEED EVERY 7 DAYS (SEE ARTICLE 280 FOR TEMPORARY EROSION ITEMS AND ARTICLE 250 & 251 FOR PERMANENT SEEDING).
- 6) FINAL SHAPE, GRADE AND PAVE ROADWAY BY STAGING SHOWN IN PLANS.
- 7) PLACE REMAINING PERMANENT EROSION CONTROLS AND LANDSCAPE ITEMS PRIOR TO THE COMPLETION OF EACH STAGE.

REVISIONS	
NAME	DATE

ILLINOIS DEPARTMENT OF TRANSPORTATION

**EROSION CONTROL PLAN**  
**LANDSCAPING**  
STA 832+25 TO STA 846+00

SCALE: VERT. 1"=50'  
HORIZ. 1"=50'  
DATE 07/05/2012

DRAWN BY KDD  
CHECKED BY MO/MEQ

DATE: 7/9/2012  
 TIME: 11:58 AM  
 USER: kdd  
 PROJECT: I-156 I-71  
 DRAWING: EROSION CONTROL PLAN  
 SHEET: 238 OF 514

**BLOOM COMPANIES, LLC**  
Infrastructure, Erosion Control and Landscaping  
800 W. Fulton Street, Suite 707 • Chicago, IL 60611  
Phone: (312) 876-0900 Fax: (312) 876-0902