

F.A.P. RTE.	SECTION	COUNTY	TOTAL SHEETS	SHEET NO.
311	(1-2)R	KENDALL	514	240
STA. 780+44.91		TO STA. 918+85.88		
FED. ROAD DIST. NO.		ILLINOIS FED. AID PROJECT		

PRE-STAGE 1 TEMPORARY SEEDING:
 STA 877+00 RT TO STA 891+50 RT
 TEMP EROS CONTR SEED - 52.7 LBS
 MULCH, METHOD 2 - 0.527 ACRE

STAGE 1 TEMPORARY SEEDING:
 STA 877+00 LT TO STA 891+50 LT
 TEMP EROS CONTR SEED - 41.8 LBS
 MULCH, METHOD 2 - 0.418 ACRE

STAGE 1D TEMPORARY SEEDING:
 WASHINGTON STREET
 STA 198+50 RT TO STA 202+00 RT
 TEMP EROS CONTR SEED - 4.0 LBS
 MULCH, METHOD 2 - 0.040 ACRE

STAGE 2 TEMPORARY SEEDING:
 STA 877+00 RT TO STA 891+50 RT
 TEMP EROS CONTR SEED - 48.7 LBS
 MULCH, METHOD 2 - 0.487 ACRE

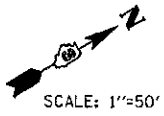
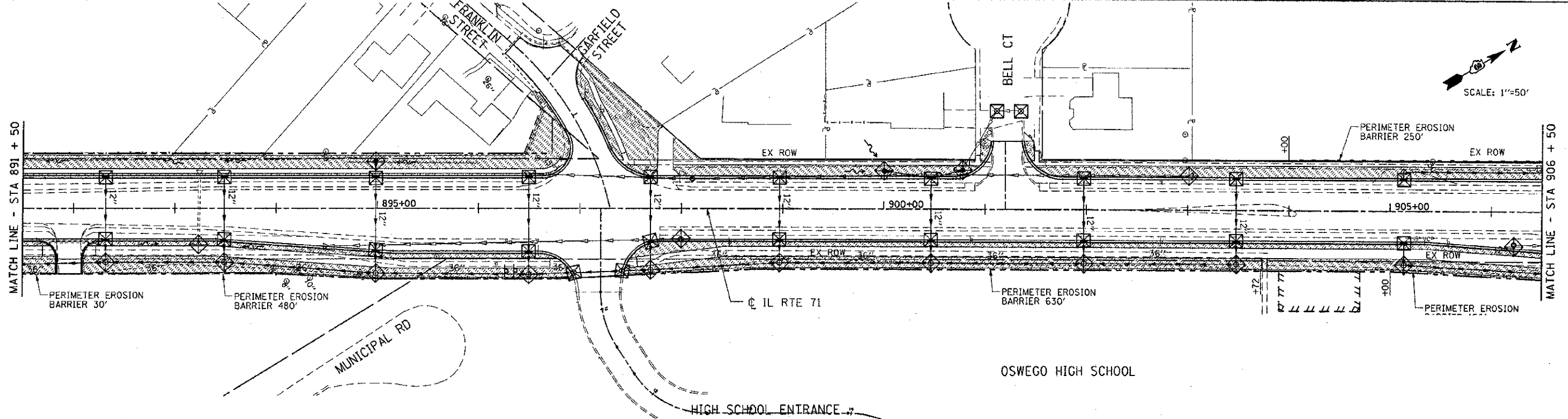
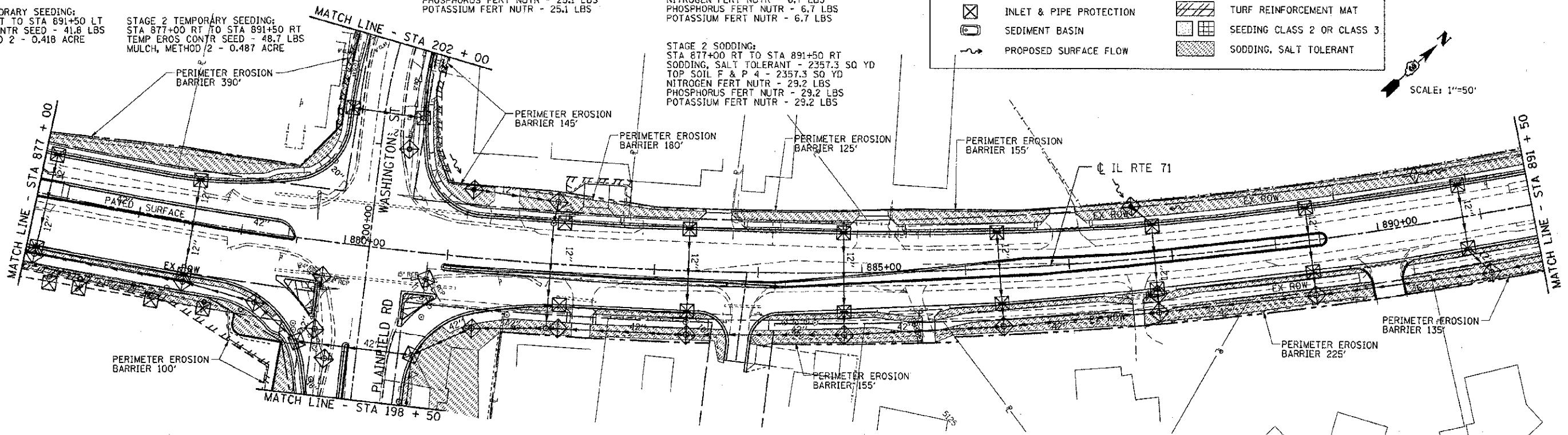
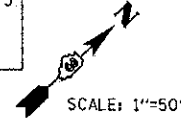
STAGE 1 SODDING:
 STA 877+00 LT TO STA 891+50 LT
 SODDING, SALT TOLERANT - 2023.5 SQ YD
 TOP SOIL F & P 4 - 2023.5 SQ YD
 NITROGEN FERT NUTR - 25.1 LBS
 PHOSPHORUS FERT NUTR - 25.1 LBS
 POTASSIUM FERT NUTR - 25.1 LBS

STAGE 1D SODDING:
 WASHINGTON STREET
 STA 198+50 RT TO STA 202+00 RT
 SODDING, SALT TOLERANT - 592.8 SQ YD
 TOP SOIL F & P 4 - 592.8 SQ YD
 NITROGEN FERT NUTR - 6.7 LBS
 PHOSPHORUS FERT NUTR - 6.7 LBS
 POTASSIUM FERT NUTR - 6.7 LBS

STAGE 2 SODDING:
 STA 877+00 RT TO STA 891+50 RT
 SODDING, SALT TOLERANT - 2357.3 SQ YD
 TOP SOIL F & P 4 - 2357.3 SQ YD
 NITROGEN FERT NUTR - 29.2 LBS
 PHOSPHORUS FERT NUTR - 29.2 LBS
 POTASSIUM FERT NUTR - 29.2 LBS

EROSION LEGEND

	PERIMETER EROSION BARRIER		STONE RIP RAP
	TEMPORARY DITCH CHECK		EROSION CONTROL BLANKET w/ SEEDING CLASS 3
	INLET & PIPE PROTECTION		TURF REINFORCEMENT MAT
	SEDIMENT BASIN		SEEDING CLASS 2 OR CLASS 3
	PROPOSED SURFACE FLOW		SODDING, SALT TOLERANT



PRE-STAGE 1 TEMPORARY SEEDING:
 STA 891+50 RT TO STA 906+50 RT
 TEMP EROS CONTR SEED - 63.0 LBS
 MULCH, METHOD 2 - 0.630 ACRE

STAGE 1 TEMPORARY SEEDING:
 STA 891+50 LT TO STA 906+50 LT
 TEMP EROS CONTR SEED - 53.5 LBS
 MULCH, METHOD 2 - 0.535 ACRE

STAGE 2 TEMPORARY SEEDING:
 STA 891+50 RT TO STA 906+50 RT
 TEMP EROS CONTR SEED - 63.0 LBS
 MULCH, METHOD 2 - 0.630 ACRE

STAGE 1 SODDING:
 STA 891+50 LT TO STA 906+50 LT
 SODDING, SALT TOLERANT - 2589.1 SQ YD
 TOP SOIL F & P 4 - 2589.1 SQ YD
 NITROGEN FERT NUTR - 32.1 LBS
 PHOSPHORUS FERT NUTR - 32.1 LBS
 POTASSIUM FERT NUTR - 32.1 LBS

STAGE 2 SODDING:
 STA 891+50 RT TO STA 906+50 RT
 SODDING, SALT TOLERANT - 3048.5 SQ YD
 TOP SOIL F & P 4 - 3048.5 SQ YD
 NITROGEN FERT NUTR - 37.8 LBS
 PHOSPHORUS FERT NUTR - 37.8 LBS
 POTASSIUM FERT NUTR - 37.8 LBS

INTENDED EROSION AND LANDSCAPE SEQUENCE

- 1) PLACE PERIMETER EROSION CONTROL BARRIER PRIOR TO COMMENCEMENT OF ANY WORK (SEE ARTICLE 280).
- 2) INSTALL TEMPORARY INLET PROTECTION AT ALL EXISTING AND PROPOSED STRUCTURES AND PIPE INLET AND OUTLETS WITHIN THE PROJECT LIMITS, AND IN ACCORDANCE WITH ARTICLE 280 OF THE IDOT STANDARD SPECIFICATION. (280001 INLET AND PIPE PROTECTION EACH).
- 3) CONSTRUCT EARTHWORK, DITCHES FIRST (MAXIMUM 10 ACRES DISTURBED AT ONE TIME PRIOR TO SEEDING - SEE ARTICLE 202 & 280).
- 4) INSTALL ALL DITCH EROSION ITEMS TO THE NEW DITCH CENTERLINES FROM OFFSETS IN SECTIONS (SEE CROSS SECTIONS).
- 5) PLACE AND MAINTAIN TEMPORARY AND PERMANENT EROSION CONTROL ITEMS FOLLOWING THE STAGED CONSTRUCTION PROCEDURE SHOWN IN THESE PLANS. SEED EVERY 7 DAYS (SEE ARTICLE 280 FOR TEMPORARY EROSION ITEMS AND ARTICLE 250 & 251 FOR PERMANENT SEEDING).
- 6) FINAL SHAPE, GRADE AND PAVE ROADWAY BY STAGING SHOWN IN PLANS.
- 7) PLACE REMAINING PERMANENT EROSION CONTROLS AND LANDSCAPE ITEMS PRIOR TO THE COMPLETION OF EACH STAGE.

REVISIONS	
NAME	DATE
BDD	8-8-12

ILLINOIS DEPARTMENT OF TRANSPORTATION

**EROSION CONTROL PLAN
 LANDSCAPING**

STA 877+00 TO STA 906+50

SCALE: VERT. 1"=5'
 HORIZ. 1"=50'
 DATE 07/06/2012

DRAWN BY KDD
 CHECKED BY MO/MED

PLOT DATE = 8/7/2012
 FILE NAME = c:\p\work\landscaping\landscaping.dwg
 PLOT SCALE = 1"=50'
 USER NAME = d\mccormack

