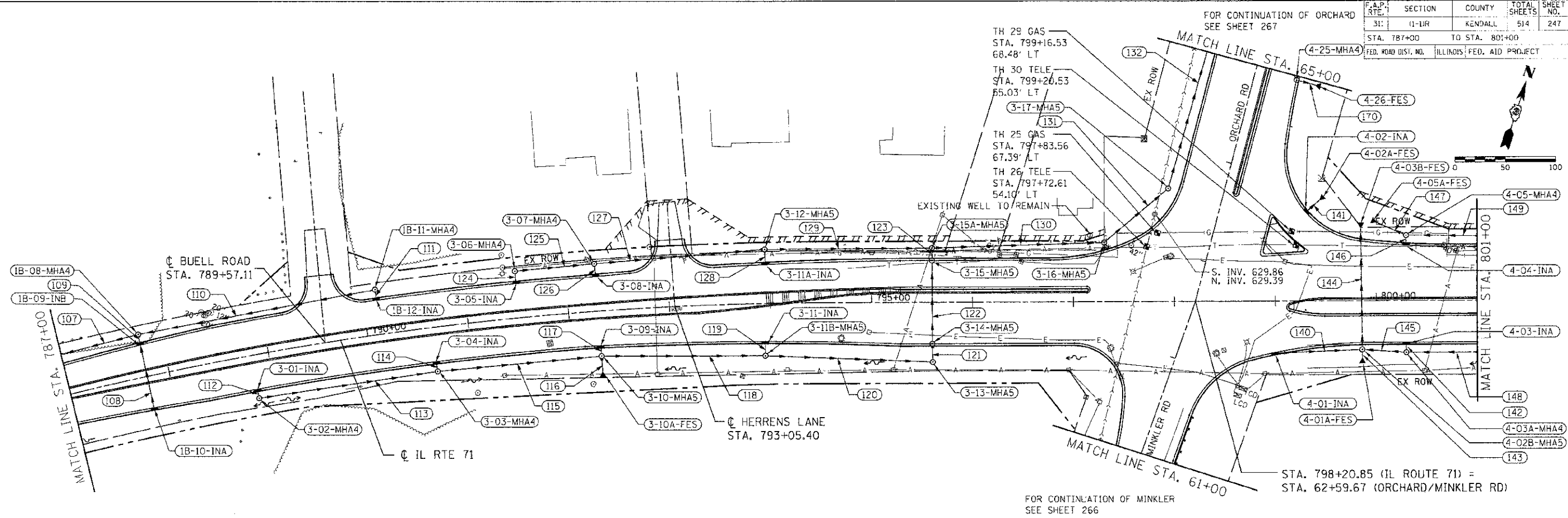


F.A.P. NO.	SECTION	COUNTY	TOTAL SHEETS	SHEET NO.
31	11-1UR	KENDALL	514	247
STA. 787+00 TO STA. 801+00		ILLINOIS FED. AID PROJECT		



DRAINAGE STRUCTURE SCHEDULE

STRUCTURE NUMBER	STATION	OFFSET	ROUTE	STRUCTURE TYPE	CASTING	RIM ELEVATION	NORTH INVERT	SOUTH INVERT	EAST INVERT	WEST INVERT	COMMENTS
1B-08-MH A	787+77.89	42.29' LT		MANHOLE, TYPE A, 4' DIAMETER	TYPE 1 FRAME, CLOSED LID	643.72		640.48	640.78	640.38	
1B-09-IN B	787+77.78	31.69' LT		INLET, TYPE B	TYPE 24 FRAME AND GRATE	644.14	640.58	640.68			
1B-10-IN A	787+77.78	31.74' RT		INLET, TYPE A	TYPE 24 FRAME AND GRATE	644.18	640.98				
1B-11-MH A	790+13.34	44.52' LT		MANHOLE, TYPE A, 4' DIAMETER	TYPE 1 FRAME, CLOSED LID	644.60		641.50		641.50	
1B-12-IN A	790+13.28	34.07' LT		INLET, TYPE A	TYPE 24 FRAME AND GRATE	645.08	641.60				
3-01-INA	788+82.87	34.00' RT		INLET, TYPE A	TYPE 24 FRAME AND GRATE	644.53		641.20			
3-02-MH A	788+83.04	42.85' RT		MANHOLE, TYPE A, 4' DIAMETER	TYPE 1 FRAME, CLOSED LID	644.50	641.10		641.00		
3-03-MH A	790+64.17	43.72' RT		MANHOLE, TYPE A, 4' DIAMETER	TYPE 1 FRAME, CLOSED LID	644.67	641.26		640.15	640.15	
3-04-IN A	790+64.10	34.00' RT		INLET, TYPE A	TYPE 24 FRAME AND GRATE	645.27		641.36			
3-05-IN A	791+50.97	34.00' LT		INLET, TYPE A	TYPE 24 FRAME AND GRATE	645.62	641.04				
3-06-MH A	791+50.99	48.01' LT		MANHOLE, TYPE A, 4' DIAMETER	TYPE 8 GRATE	644.50		640.94	640.94		
3-07-MH A	792+28.79	46.88' LT		MANHOLE, TYPE A, 4' DIAMETER	TYPE 1 FRAME, CLOSED LID	644.40		639.80	639.00	639.23	
3-08-IN A	792+28.53	34.31' LT		INLET, TYPE A	TYPE 24 FRAME AND GRATE	645.94	640.00				
3-09-IN A	792+29.47	34.32' RT		INLET, TYPE A	TYPE 24 FRAME AND GRATE	645.94		640.80			
3-10-MH A	792+29.59	44.47' RT		MANHOLE, TYPE A, 5' DIAMETER	TYPE 8 GRATE	643.20	640.50	640.50	639.40	639.40	
3-10A-FES	792+29.44	59.59' RT		PRC FLARED END SECTION, 27			640.90				
3-11-IN A	793+94.12	37.53' RT		INLET, TYPE A	TYPE 24 FRAME AND GRATE	646.57		642.20			
3-11A-IN A	793+95.71	38.14' LT		INLET, TYPE A	TYPE 24 FRAME AND GRATE	646.61	639.07				
3-11B-MH A	793+93.91	51.65' RT		MANHOLE, TYPE A, 5' DIAMETER	TYPE 8 GRATE	644.93	642.00		638.88	638.88	
3-12-MH A	793+95.33	53.15' LT		MANHOLE, TYPE A, 5' DIAMETER	TYPE 1 FRAME, CLOSED LID	644.50		638.97	638.27	638.47	
3-13-MH A	795+60.47	58.95' RT		MANHOLE, TYPE A, 5' DIAMETER	TYPE 8 GRATE	645.10	638.18		638.27	638.28	
3-14-MH A	795+60.10	40.98' RT		MANHOLE, TYPE A, 5' DIAMETER	TYPE 24 FRAME AND GRATE	647.29	638.05	638.15			
3-16-MH A	795+60.01	41.02' LT		MANHOLE, TYPE A, 5' DIAMETER	TYPE 24 FRAME AND GRATE	647.29	637.82	637.92			
3-15A-MH A	795+60.09	53.40' LT		MANHOLE, TYPE A, 5' DIAMETER	TYPE 1 FRAME, CLOSED LID	646.09		637.48	637.48	637.86	
3-16-MH A	797+30.71	58.27' LT		MANHOLE, TYPE A, 5' DIAMETER	TYPE 1 FRAME, CLOSED LID	647.40	638.49			636.49	
3-17-MH A	797+94.21	111.09' LT		MANHOLE, TYPE A, 5' DIAMETER	TYPE 1 FRAME, CLOSED LID	646.50	635.80	635.90			
4-01-IN A	798+99.58	50.64' RT		INLET, TYPE A	TYPE 24 FRAME AND GRATE	648.48			645.00		
4-01A-FES	799+86.05	55.97' RT		PRC FLARED END SECTION, 30 EQRS				844.11			
4-02-IN A	799+30.99	87.00' LT		INLET, TYPE A	TYPE 24 FRAME AND GRATE	647.25			644.26		
4-02A-FES	799+43.84	98.76' LT		PRC FLARED END SECTION, 12				843.90			
4-02B-MH A	799+85.97	48.03' RT		MANHOLE, TYPE A, 5' DIAMETER	TYPE 1 FRAME, CLOSED LID	648.90	644.08	644.08	644.58	644.58	
4-03-IN A	800+29.58	41.00' RT		INLET, TYPE A	TYPE 24 FRAME AND GRATE	648.20		645.40			
4-03A-MH A	800+29.58	50.99' RT		MANHOLE, TYPE A, 4' DIAMETER	TYPE 1 FRAME, CLOSED LID	648.40	645.30		644.84	644.74	
4-03B-FES	799+84.77	70.91' LT		PRC FLARED END SECTION, 30 EQRS				643.88			
4-04-IN A	800+29.59	54.43' LT		INLET, TYPE A	TYPE 24 FRAME AND GRATE	648.86	645.39				
4-05-MH A	800+29.55	63.99' LT		MANHOLE, TYPE A, 4' DIAMETER	TYPE 1 FRAME, CLOSED LID	648.36		645.29	644.16	644.06	
4-05A-FES	800+00.75	76.70' LT		PRC FLARED END SECTION, 18				643.90			
4-25-MH A	64+95.84	41.52' RT	ORCHARD RD.	MANHOLE, TYPE A, 4' DIAMETER	TYPE 24 FRAME AND GRATE	647.63		643.63	643.63	643.63	
4-26-FES	64+95.37	80.92' RT	ORCHARD RD.	PRC FLARED END SECTION, 12					642.77		

STORM SEWER SCHEDULE

SEGMENT	SIZE	LENGTH	GRADE
107	18" SS X	132.9' @	0.32 %
108	12" SS X	83.4' @	0.47 %
109	12" SS X	4.6' @	2.17 %
110	12" SS X	234.6' @	0.31 %
111	12" SS X	6.5' @	1.54 %
112	12" SS X	5.1' @	1.96 %
113	12" SS X	174.7' @	0.49 %
114	12" SS X	5.7' @	1.75 %
115	15" SS X	158.5' @	0.47 %
116	27" SS X	12.5' @	3.20 %
117	12" SS X	5.7' @	1.75 %
118	27" SS X	157.0' @	0.33 %
119	12" SS X	9.6' @	2.08 %
120	27" SS X	160.8' @	0.37 %
121	27" SS X	10.5' @	0.29 %
122	27" SS X	82.0' @	0.16 %
123	27" SS X	4.9' @	6.94 %
124	12" SS X	8.3' @	1.20 %
125	12" SS X	74.9' @	2.28 %
126	12" SS X	8.5' @	2.35 %
127	15" SS X	164.8' @	0.32 %
128	12" SS X	8.5' @	1.18 %
129	18" SS X	160.6' @	0.26 %
130	27" SS X	165.8' @	0.60 %
131	27" SS X	77.6' @	0.76 %
132	27" SS X	181.4' @	0.69 %

STORM SEWER SCHEDULE

SEGMENT	SIZE	LENGTH	GRADE
140	12" SS X	83.3' @	0.50 %
141	12" SS X	15.8' @	2.28 %
142	12" SS X	6.0' @	1.67 %
143	30" EQRS X	5.5' @	0.55 %
144	30" EQRS X	116.4' @	0.17 %
145	18" SS X	39.2' @	0.41 %
146	12" SS X	5.8' @	1.79 %
147	18" SS X	29.0' @	0.55 %
148	18" SS X	126.2' @	0.40 %
149	18" SS X	128.1' @	0.50 %
170	12" SS X	15.3' @	5.62 %

REVISIONS	
NAME	DATE

ILLINOIS DEPARTMENT OF TRANSPORTATION
DRAINAGE PLAN
STA. 787+00 TO STA. 801+00
 SCALE: VERT. 1"=50'
 HORIZ. 1"=50'
 DATE 7/5/2012
 DRAWN BY RLH
 CHECKED BY MED

TUG: 08/11/2012 09:58:59
 PLOT DATE: 7/5/2012
 FILE NAME: p:\m\66420\11\drain\drain\plan\11DRN01.dwg