

| F.A.P. RTE.                                   | SECTION | COUNTY  | TOTAL SHEETS | SHEET NO. |
|---|---------|---------|--------------|-----------|
| 311   | I-1/R   | KENDALL | 514          | 288       |
| STA. TO STA.                                  |         |         |              |           |
| FED. ROAD DIST. NO. ILLINOIS FED. AID PROJECT |         |         |              |           |

**geotrack**

SUBSURFACE UTILITY ENGINEERING

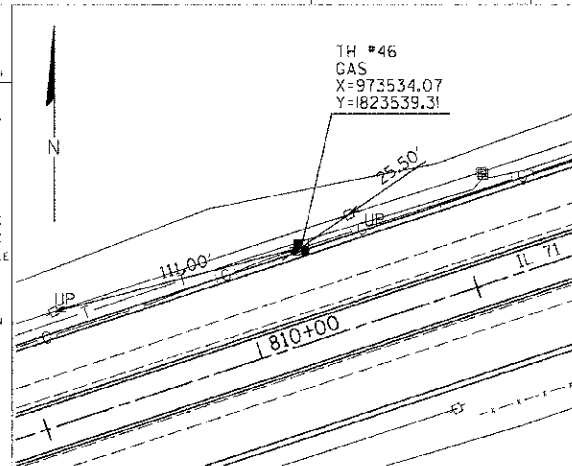
Utility Location Report for Test Hole #6 in U.S. Survey Feet.

735 N. Harvard  
Villa Park, IL 60181  
VOICE: (630)530-7609  
FAX: (630)530-8167

Pavement: N/A in. Asphalt N/A in. Concrete  
Soil: Type CLAY Conditions SOFT  
Utility: GAS Size: 4" Material: STL Cond: GOOD  
Was it found? YES At the requested location? YES  
Bench Mark: Name/No. BM#1 Elev. = 651.91  
City: OSWEGO County: KENDALL State: ILLINOIS  
As shown on sheet 2 of 10 on the plans dated 11/4/03 and called SUE DESIG. SHTS.

SKETCH PLAN:  
\* NOT TO SCALE \*  
HORIZONTAL SURVEY  
ACCURACY = +/- 0.015m

- SYMBOL LEGEND**
- TEST HOLE HUB/PK
  - UTILITY POLE
  - FIRE HYDRANT
  - WATER VALVE
  - GAS VALVE
  - STORM MANHOLE
  - SANITARY MANHOLE
  - ELECTRIC MANHOLE
  - TELEPHONE MANHOLE
  - CATCH BASIN
  - ELECTRIC TRANSFORMER
  - CABLE TELEVISION PEDESTAL
  - TELEPHONE PEDESTAL
  - SURVEY TRAVERSE POINT
  - STORM GRATE
  - INLET

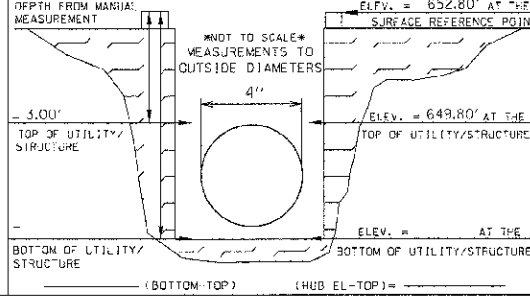


- ABBREVIATIONS**
- B.M. - Benchmark
  - CB - Catch Basin
  - CL - Centerline
  - CI - Cast Iron
  - CMP - Corrugated Metal Pipe
  - CONC - Concrete
  - CONDUIT - Conduit
  - DI - Ductile Iron
  - DM - Driveway
  - ELEC - Electric
  - ELEV - Elevation
  - EP - Edge of Pavement
  - FH - Fire Hydrant
  - GP - Gas Valve
  - HPP - High Pressure Plastic
  - LP - Light Pole
  - PVC - Polyvinyl Chloride
  - RCP - Reinforced Concrete Pipe
  - R/W - Right-of-Way
  - SAN - Sanitary Sewer
  - SD - Storm Sewer
  - SG - Storm Sewer Grate
  - STM - Storm Sewer Manhole
  - SW - Sidewalk
  - STL - Steel
  - TH - Test Hole
  - TC - Terra Cotta
  - TRAN - Transformer
  - TRAV - Survey Traverse Point
  - UP - Utility Pole
  - W/L - Water Line

UTILITY OWNER: NICOR GAS  
REPRESENTATIVE: SCOTT STOGSDILL  
PHONE No: 1-630-983-8687 X2362  
FAX No:

TEST HOLE PROFILE LOOKING NORTH EAST  
VERTICAL SURVEY ACCURACY = +/- 0.015m  
FLAGGING COLOR YELLOW

**CERTIFICATION:**  
I hereby certify that the information shown hereon is correct to the best of my knowledge and belief.



**geotrack**

SUBSURFACE UTILITY ENGINEERING

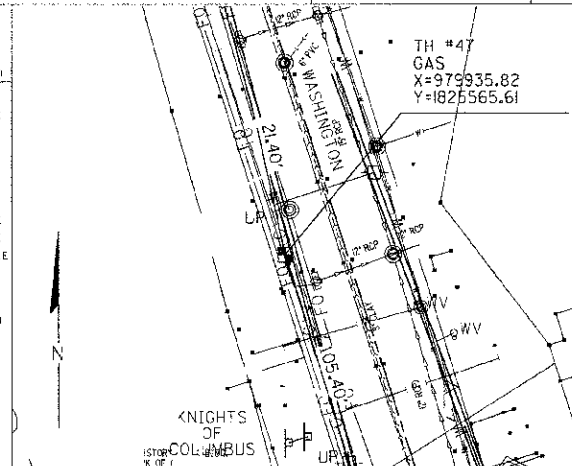
Utility Location Report for Test Hole #47 in U.S. Survey Feet.

735 N. Harvard  
Villa Park, IL 60181  
VOICE: (630)530-7609  
FAX: (630)530-8167

Pavement: N/A in. Asphalt N/A in. Concrete  
Soil: Type CLAY Conditions HARD  
Utility: GAS Size: 2" Material: STL Cond: GOOD  
Was it found? YES At the requested location? YES  
Bench Mark: Name/No. BM#1 Elev. = 651.91  
City: OSWEGO County: KENDALL State: ILLINOIS  
As shown on sheet 7 of 10 on the plans dated 11/4/03 and called SUE DESIG. SHTS.

SKETCH PLAN:  
\* NOT TO SCALE \*  
HORIZONTAL SURVEY  
ACCURACY = +/- 0.015m

- SYMBOL LEGEND**
- TEST HOLE HUB/PK
  - UTILITY POLE
  - FIRE HYDRANT
  - WATER VALVE
  - GAS VALVE
  - STORM MANHOLE
  - SANITARY MANHOLE
  - ELECTRIC MANHOLE
  - TELEPHONE MANHOLE
  - CATCH BASIN
  - ELECTRIC TRANSFORMER
  - CABLE TELEVISION PEDESTAL
  - SURVEY TRAVERSE POINT
  - STORM GRATE
  - INLET

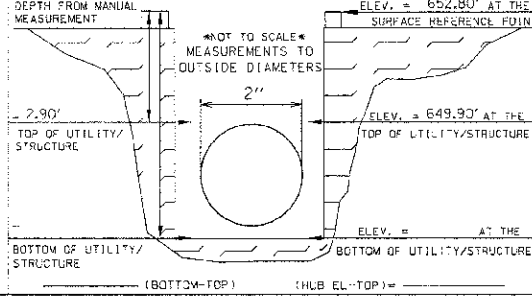


- ABBREVIATIONS**
- B.M. - Benchmark
  - CB - Catch Basin
  - CL - Centerline
  - CI - Cast Iron
  - CMP - Corrugated Metal Pipe
  - CONC - Concrete
  - CONDUIT - Conduit
  - DI - Ductile Iron
  - DM - Driveway
  - ELEC - Electric
  - ELEV - Elevation
  - EP - Edge of Pavement
  - FH - Fire Hydrant
  - GP - Gas Valve
  - HPP - High Pressure Plastic
  - LP - Light Pole
  - PVC - Polyvinyl Chloride
  - RCP - Reinforced Concrete Pipe
  - R/W - Right-of-Way
  - SAN - Sanitary Sewer
  - SD - Storm Sewer
  - SG - Storm Sewer Grate
  - STM - Storm Sewer Manhole
  - SW - Sidewalk
  - STL - Steel
  - TH - Test Hole
  - TC - Terra Cotta
  - TRAN - Transformer
  - TRAV - Survey Traverse Point
  - UP - Utility Pole
  - W/L - Water Line

UTILITY OWNER: NICOR GAS  
REPRESENTATIVE: SCOTT STOGSDILL  
PHONE No: 1-630-983-8687 X2362  
FAX No:

TEST HOLE PROFILE LOOKING NORTH  
VERTICAL SURVEY ACCURACY = +/- 0.015m  
FLAGGING COLOR YELLOW

**CERTIFICATION:**  
I hereby certify that the information shown hereon is correct to the best of my knowledge and belief.



**geotrack**

SUBSURFACE UTILITY ENGINEERING

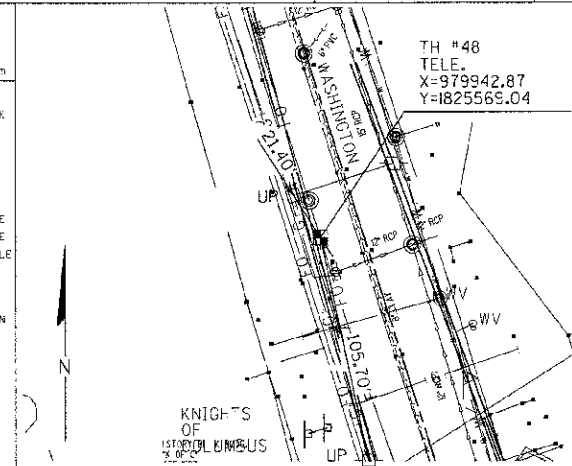
Utility Location Report for Test Hole #48 in U.S. Survey Feet.

735 N. Harvard  
Villa Park, IL 60181  
VOICE: (630)530-7609  
FAX: (630)530-8167

Pavement: N/A in. Asphalt N/A in. Concrete  
Soil: Type SAND Conditions SOFT  
Utility: TELE Size: 4" Material: CONC Cond: GOOD  
Was it found? YES At the requested location? YES  
Bench Mark: Name/No. BM#1 Elev. = 651.91  
City: OSWEGO County: KENDALL State: ILLINOIS  
As shown on sheet 7 of 10 on the plans dated 11/4/03 and called SUE DESIG. SHTS.

SKETCH PLAN:  
\* NOT TO SCALE \*  
HORIZONTAL SURVEY  
ACCURACY = +/- 0.015m

- SYMBOL LEGEND**
- TEST HOLE HUB/PK
  - UTILITY POLE
  - FIRE HYDRANT
  - WATER VALVE
  - GAS VALVE
  - STORM MANHOLE
  - SANITARY MANHOLE
  - ELECTRIC MANHOLE
  - TELEPHONE MANHOLE
  - CATCH BASIN
  - ELECTRIC TRANSFORMER
  - CABLE TELEVISION PEDESTAL
  - SURVEY TRAVERSE POINT
  - STORM GRATE
  - INLET

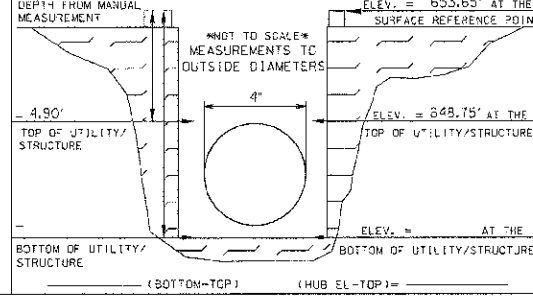


- ABBREVIATIONS**
- B.M. - Benchmark
  - CB - Catch Basin
  - CL - Centerline
  - CI - Cast Iron
  - CMP - Corrugated Metal Pipe
  - CONC - Concrete
  - CONDUIT - Conduit
  - DI - Ductile Iron
  - DM - Driveway
  - ELEC - Electric
  - ELEV - Elevation
  - EP - Edge of Pavement
  - FH - Fire Hydrant
  - GP - Gas Valve
  - HPP - High Pressure Plastic
  - LP - Light Pole
  - PVC - Polyvinyl Chloride
  - RCP - Reinforced Concrete Pipe
  - R/W - Right-of-Way
  - SAN - Sanitary Sewer
  - SD - Storm Sewer
  - SG - Storm Sewer Grate
  - STM - Storm Sewer Manhole
  - SW - Sidewalk
  - STL - Steel
  - TH - Test Hole
  - TC - Terra Cotta
  - TRAN - Transformer
  - TRAV - Survey Traverse Point
  - UP - Utility Pole
  - W/L - Water Line

UTILITY OWNER: SBC  
REPRESENTATIVE:  
PHONE No:  
FAX No:

TEST HOLE PROFILE LOOKING NORTH  
VERTICAL SURVEY ACCURACY = +/- 0.015m  
FLAGGING COLOR ORANGE

**CERTIFICATION:**  
I hereby certify that the information shown hereon is correct to the best of my knowledge and belief.



| REVISIONS |      |
|-----------|------|
| NAME      | DATE |
|           |      |
|           |      |
|           |      |
|           |      |
|           |      |

ILLINOIS DEPARTMENT OF TRANSPORTATION  
**S.U.E. TEST HOLE DATA SHEETS**  
**TEST HOLE NOS. 46 - 48**  
SCALE: VERT. HORIZ. DATE: 7/5/2012  
DRAWN BY: SAE  
CHECKED BY: MED