

N.E. 1/4 OF SEC. 19, T.37N., R.8E. OF THE 3RD P.M.

PARCEL 3SD0022

JOHN J. JENNINGS, et ux.

TOTAL HOLDING = 12,710 Sq Ft.±
TOTAL R.O.W. REQUIRED = 1,145 Sq Ft.±
REMAINDER = 11,565 Sq Ft.±

Table with 4 columns: PARCEL, POINT TO POINT, BEARING, DISTANCE. Rows for points 104 to 103, 103 to 105, 105 to 106, 106 to 104.

PARCEL 3SD0027

TRUONG NHAT TRUONG

TOTAL HOLDING = 16,382 Sq Ft.±
TOTAL R.O.W. REQUIRED = 570 Sq Ft.±
REMAINDER = 15,812 Sq Ft.±

Table with 4 columns: PARCEL, POINT TO POINT, BEARING, DISTANCE. Rows for points 106 to 105, 105 to 107, 107 to 108, 108 to 106.

PARCEL 3SD0028

WILLIAM M. BLIDY

TOTAL HOLDING = 10,000 Sq Ft.±
TOTAL R.O.W. REQUIRED = 1,259 Sq Ft.±
REMAINDER = 8,741 Sq Ft.±

Table with 4 columns: PARCEL, POINT TO POINT, BEARING, DISTANCE. Rows for points 108 to 109, 109 to 110, 110 to 111.

PARCEL 3SD0029

LISA M. GULLEDGE

TOTAL HOLDING = 10,140 Sq Ft.±
TOTAL R.O.W. REQUIRED = 1,784 Sq Ft.±
REMAINDER = 8,356 Sq Ft.±

Table with 4 columns: PARCEL, POINT TO POINT, BEARING, DISTANCE. Rows for points 111 to 110, 110 to 112, 112 to 113, 113 to 111.

PARCEL 3SD0023

CHRISTOPHER NEUMANN, et ux.

TOTAL HOLDING = 12,836 Sq Ft.±
TOTAL R.O.W. REQUIRED = 2,373 Sq Ft.±
REMAINDER = 10,463 Sq Ft.±

PARCEL 3SD0024

ANDREA L. NICOL, A MARRIED PERSON

TOTAL HOLDING = 14,907 Sq Ft.±
TOTAL R.O.W. REQUIRED = 1,297 Sq Ft.±
REMAINDER = 13,610 Sq Ft.±

PARCEL 3SD0025

JOHN R. HOLMES, et ux.

TOTAL HOLDING = 40,498 Sq Ft.±
TOTAL R.O.W. REQUIRED = 5,917 Sq Ft.±
REMAINDER = 34,581 Sq Ft.±

PARCEL 3SD0026

ARM PROPERTIES, LLC

TOTAL HOLDING = 90,621 Sq Ft.±
TOTAL R.O.W. REQUIRED = 3,875 Sq Ft.±
REMAINDER = 86,746 Sq Ft.±

Table with 3 columns: POINT TO POINT, BEARING, DISTANCE. Rows for points 130A to 130A, 130A to 130.

P.I. STA. 874+15.30
Delta = 63° 50' 44"
R = 3575.28'
T = 2227.39'
L = 3983.98'
E = 637.07'
P.C. STA. 851+87.92
P.T. STA. 891+71.90

PARCEL 3SD0037

DAWYN McCALLISTER

TOTAL HOLDING = 8,755 Sq Ft.±
TOTAL R.O.W. REQUIRED = 1,311 Sq Ft.±
REMAINDER = 7,444 Sq Ft.±

Table with 4 columns: PARCEL, POINT TO POINT, BEARING, DISTANCE. Rows for points 130 to 129, 129 to 131, 131 to 132, 132 to 130.

PARCEL 3SD0036

HENRICA LAUER AKA RITA LAUER

TOTAL HOLDING = 6,023 Sq Ft.±
TOTAL R.O.W. REQUIRED = 516 Sq Ft.±
REMAINDER = 5,507 Sq Ft.±

Table with 4 columns: PARCEL, POINT TO POINT, BEARING, DISTANCE. Rows for points 130 to 126, 126 to 125, 125 to 129, 129 to 130.

PARCEL 3SD0035

CHARLES R. HERIAUD, et ux.

TOTAL HOLDING = 6,229 Sq Ft.±
TOTAL R.O.W. REQUIRED = 617 Sq Ft.±
REMAINDER = 5,612 Sq Ft.±

Table with 4 columns: PARCEL, POINT TO POINT, BEARING, DISTANCE. Rows for points 128 to 123, 123 to 125, 125 to 126, 126 to 127, 127 to 128.

PARCEL 3SD0034

FEDERAL NATIONAL MORTGAGE ASSOCIATION

TOTAL HOLDING = 6,221 Sq Ft.±
TOTAL R.O.W. REQUIRED = 807 Sq Ft.±
REMAINDER = 5,414 Sq Ft.±

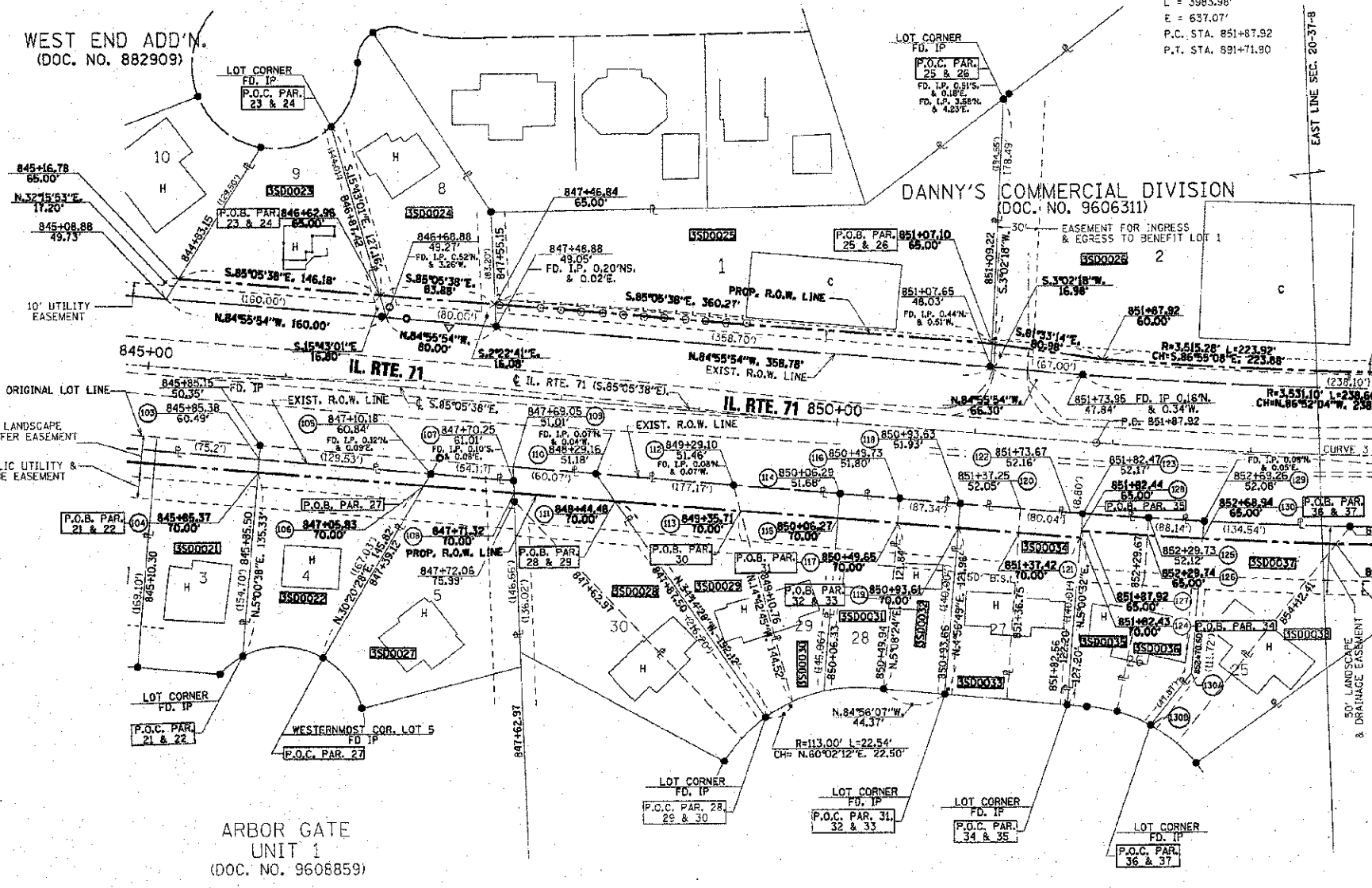
Table with 4 columns: PARCEL, POINT TO POINT, BEARING, DISTANCE. Rows for points 124 to 121, 121 to 120, 120 to 122, 122 to 123, 123 to 124.

PARCEL 3SD0033

JONATHAN C. FAY, et ux.

TOTAL HOLDING = 6,208 Sq Ft.±
TOTAL R.O.W. REQUIRED = 787 Sq Ft.±
REMAINDER = 5,421 Sq Ft.±

Table with 4 columns: PARCEL, POINT TO POINT, BEARING, DISTANCE. Rows for points 119 to 118, 118 to 120, 120 to 121, 121 to 119.



ARBOR GATE UNIT 1 (DOC. NO. 9608859)

LAKEVIEW ESTATES WEST SUB. UNIT 1 (DOC. NO. 9411457)

PARCEL 3SD0030

MARION M. BANASZAK

TOTAL HOLDING = 7,544 Sq Ft.±
TOTAL R.O.W. REQUIRED = 1,361 Sq Ft.±
REMAINDER = 6,183 Sq Ft.±

Table with 4 columns: PARCEL, POINT TO POINT, BEARING, DISTANCE. Rows for points 113 to 112, 112 to 114, 114 to 115, 115 to 113.

PARCEL 3SD0031

MICHELE CLEMANS

TOTAL HOLDING = 6,106 Sq Ft.±
TOTAL R.O.W. REQUIRED = 797 Sq Ft.±
REMAINDER = 5,313 Sq Ft.±

Table with 4 columns: PARCEL, POINT TO POINT, BEARING, DISTANCE. Rows for points 117 to 115, 115 to 114, 114 to 116, 116 to 117.

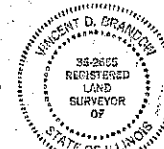
PARCEL 3SD0032

ROY G. MARANTO, et ux.

TOTAL HOLDING = 6,181 Sq Ft.±
TOTAL R.O.W. REQUIRED = 797 Sq Ft.±
REMAINDER = 5,384 Sq Ft.±

Table with 4 columns: PARCEL, POINT TO POINT, BEARING, DISTANCE. Rows for points 119 to 117, 117 to 116, 116 to 118, 118 to 119.

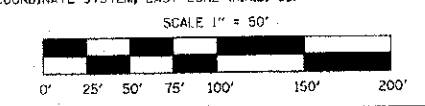
I VINCENT D. BRANDOW, HEREBY CERTIFY THAT I AM A PROFESSIONAL LAND SURVEYOR OF THE STATE OF ILLINOIS, THAT THE SURVEY OF PROPOSED F.A.P. 311 (ILL. RTE. 71) WAS MADE BY RENWICK & ASSOCIATES, INC. UNDER MY DIRECTION...



DATE: 10-15-10
SURVEY BOOK NO.
ILLINOIS PROFESSIONAL LAND SURVEYOR NO. 2655
EXPIRATION DATE: 11-30-10

N.E. 1/4 OF SEC. 19, T.37N., R.8E. OF THE 3RD P.M.

NOTE: ALL BEARINGS ARE REFERENCED TO THE ILLINOIS STATE PLANE COORDINATE SYSTEM, EAST ZONE (N.A.D. 83)



RIGHT OF WAY PLANS table with columns: ROUTE, SECTION, PROJECT, COUNTY, JOB NUMBER, STATION, SHEET. Includes details for F.A.P. 311 (ILL. RTE. 71).