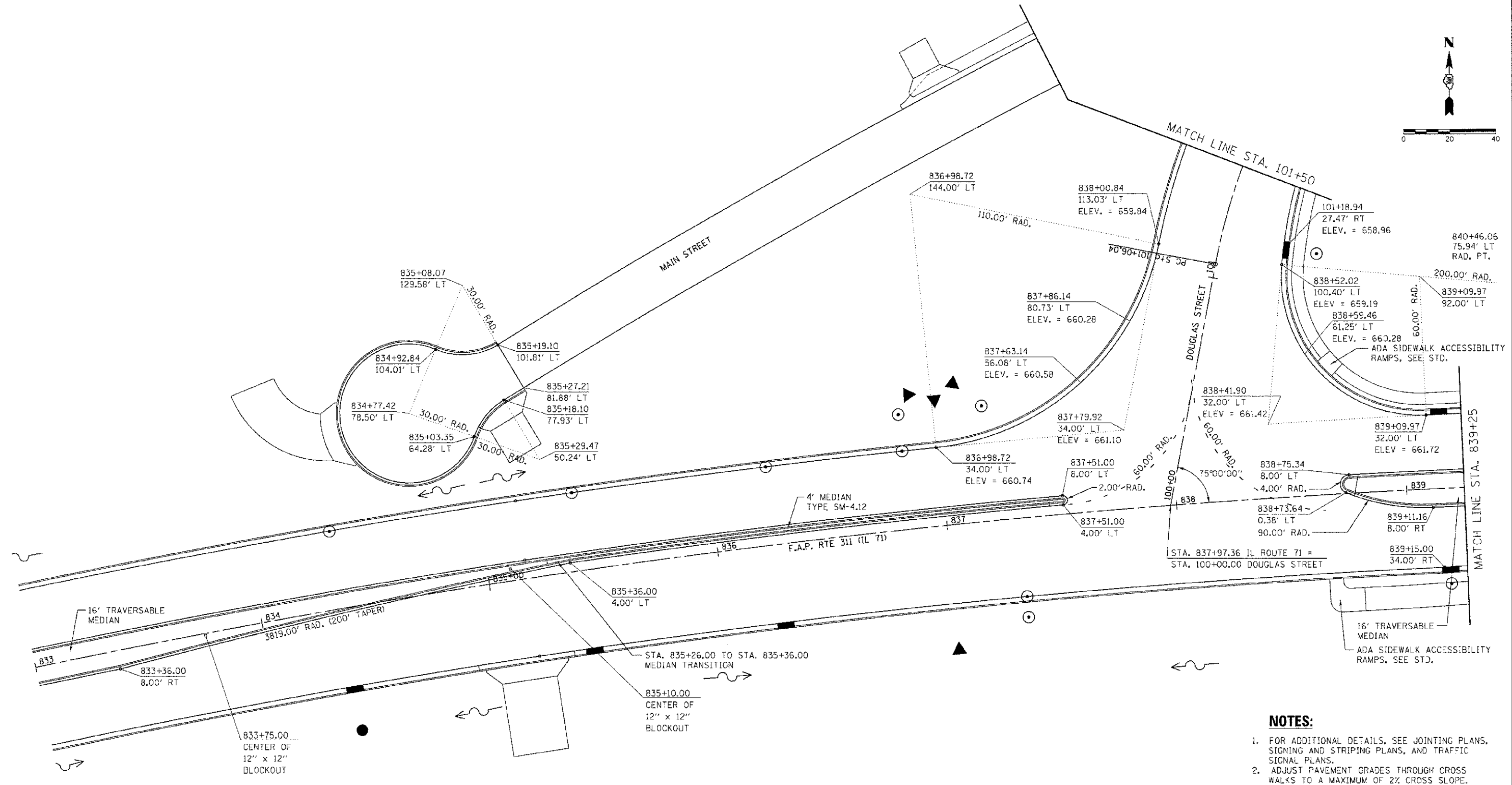
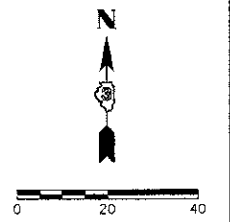


F.A.P. RTE.	SECTION	COUNTY	TOTAL SHEETS	SHEET NO.
311	11-11R	KENDALL	514	330
STA. 833+00	TO STA. 839+25			
FED. ROAD DIST. NO. ILLINOIS, FED. AID PROJECT				



**NOTES:**

1. FOR ADDITIONAL DETAILS, SEE JOINTING PLANS, SIGNING AND STRIPING PLANS, AND TRAFFIC SIGNAL PLANS.
2. ADJUST PAVEMENT GRADES THROUGH CROSS WALKS TO A MAXIMUM OF 2% CROSS SLOPE.

REVISIONS	
NAME	DATE

ILLINOIS DEPARTMENT OF TRANSPORTATION  
**INTERSECTION DETAIL**  
**DOUGLAS STREET**  
**STA. 833+00 TO STA. 839+25**

SCALE: VERT. 1"=20'  
 HORIZ. 1"=20'  
 DATE 7/5/2012

DRAWN BY SAE  
 CHECKED BY MED

TUG PROJ: 13085804  
 PLOT DATE: 7/5/2012  
 FILE NAME: p:\projects\13085804\11-Douglas-01.dwg