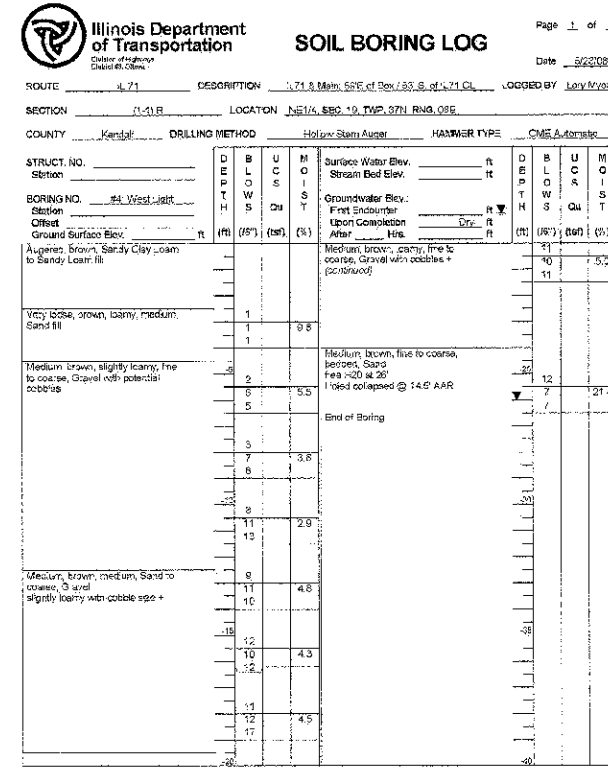


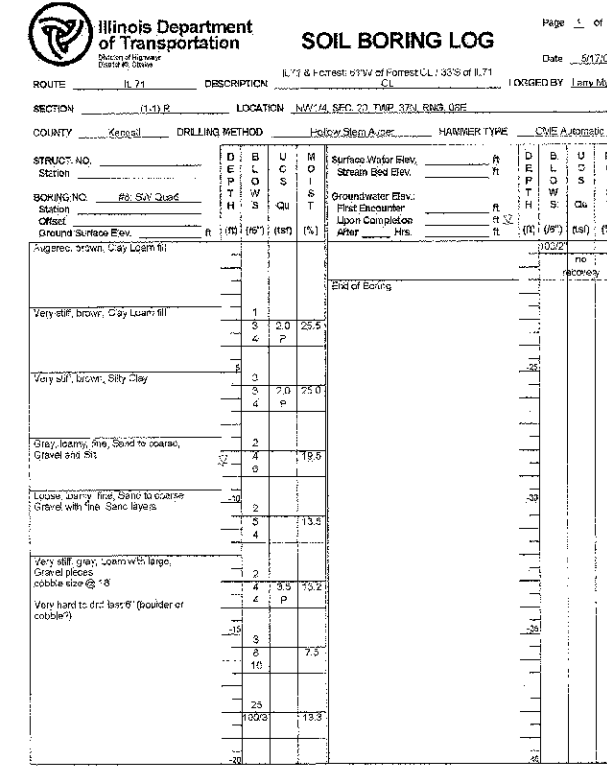
The Unconfined Compressive Strength (UCS) Failure Mode is indicated by (B-Bulge, S-Shear, P-Penetrometer). The SPT (N value) is the sum of the last two blow values in each sampling zone (ASTM D 1586). BBS, from 137 (Rev. 8-99)

ILLINOIS ROUTE 71 @ ORCHARD ROAD/MINKLER ROAD



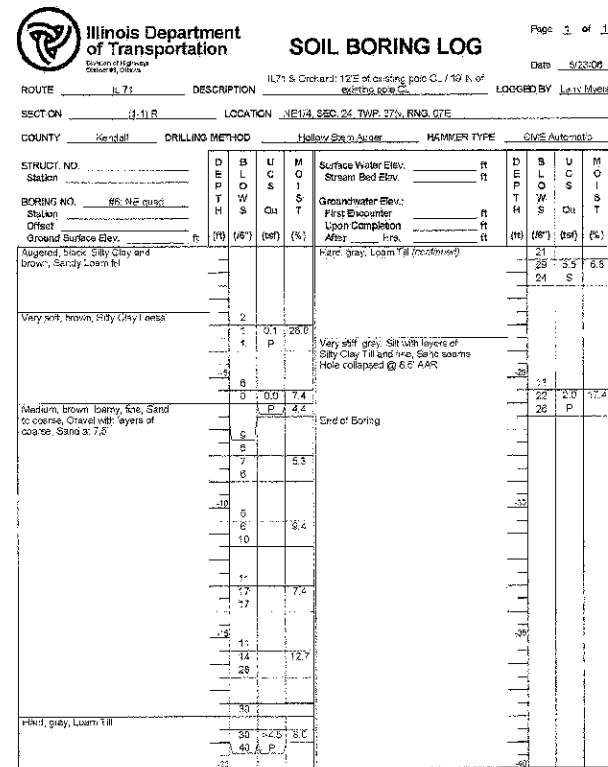
The Unconfined Compressive Strength (UCS) Failure Mode is indicated by (B-Bulge, S-Shear, P-Penetrometer). The SPT (N value) is the sum of the last two blow values in each sampling zone (ASTM D 1586). BBS, from 137 (Rev. 8-99)

ILLINOIS ROUTE 71 @ DOUGLAS STREET



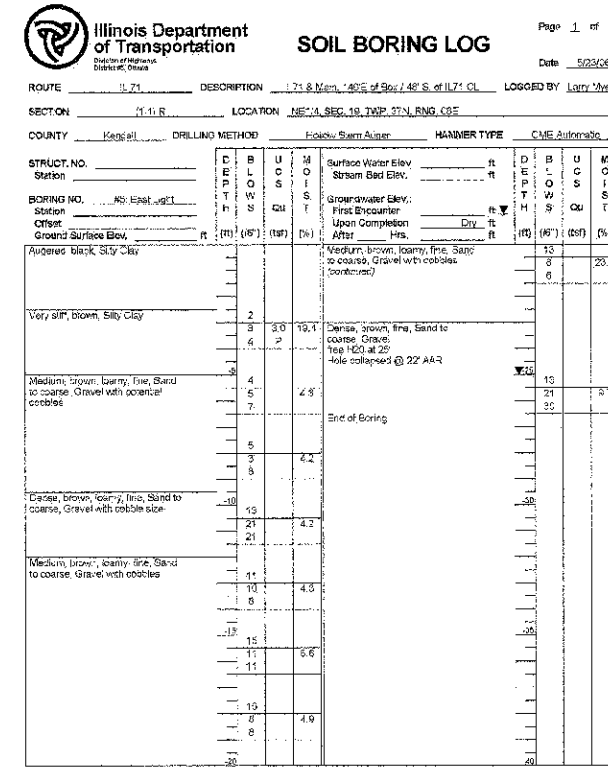
The Unconfined Compressive Strength (UCS) Failure Mode is indicated by (B-Bulge, S-Shear, P-Penetrometer). The SPT (N value) is the sum of the last two blow values in each sampling zone (ASTM D 1586). BBS, from 137 (Rev. 8-99)

ILLINOIS ROUTE 71 @ FOREST AVENUE



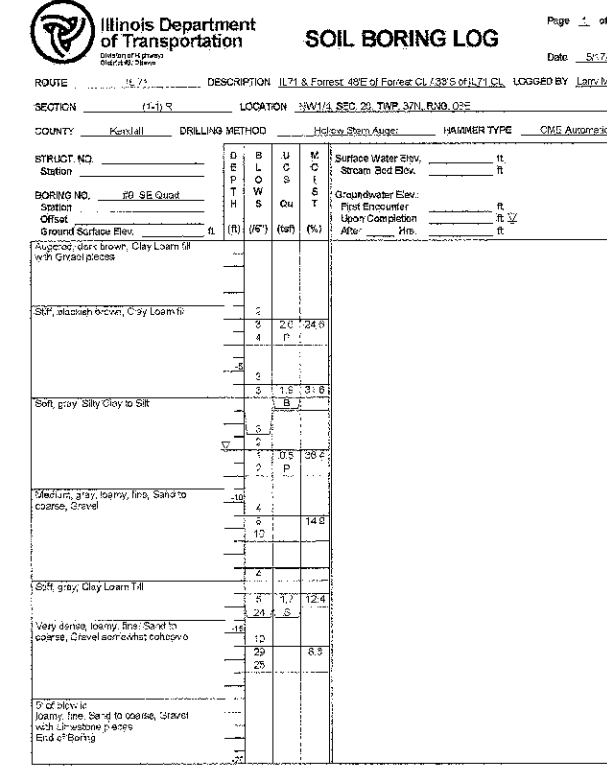
The Unconfined Compressive Strength (UCS) Failure Mode is indicated by (B-Bulge, S-Shear, P-Penetrometer). The SPT (N value) is the sum of the last two blow values in each sampling zone (ASTM D 1586). BBS, from 137 (Rev. 8-99)

ILLINOIS ROUTE 71 @ ORCHARD ROAD/MINKLER ROAD



The Unconfined Compressive Strength (UCS) Failure Mode is indicated by (B-Bulge, S-Shear, P-Penetrometer). The SPT (N value) is the sum of the last two blow values in each sampling zone (ASTM D 1586). BBS, from 137 (Rev. 8-99)

ILLINOIS ROUTE 71 @ DOUGLAS STREET



The Unconfined Compressive Strength (UCS) Failure Mode is indicated by (B-Bulge, S-Shear, P-Penetrometer). The SPT (N value) is the sum of the last two blow values in each sampling zone (ASTM D 1586). BBS, from 137 (Rev. 8-99)

ILLINOIS ROUTE 71 @ FOREST AVENUE

REVISIONS	
NAME	DATE

ILLINOIS DEPARTMENT OF TRANSPORTATION
TRAFFIC SIGNAL SOIL BORING LOGS
SHEET 1 OF 2

SCALE: N.T.S. DRAWN BY: NMR
 DATE: 7/9/2012 CHECKED BY: DJL

DATE = 7/9/2012
 FILE NAME = p:\civ\11111\dms\dms3\soilboring\shere\11111\16.16.B.L.D.rdg
 PLOT SCALE = 28.26889 1/16"