

F.A.P. RYE	SECTION	COUNTY	TOTAL SHEETS	SHEET NO.
311	Q-11R	KENDALL	514	373
STA.		TO STA.		
FED. ROAD DIST. NO.		ILLINOIS FED. AID PROJECT		

ILLINOIS ROUTE 71 AT DOUGLAS STREET ELECTRICAL LOAD CHART

ILLINOIS ROUTE 71			
INDICATION	NUMBER	WATTAGE EACH	BURN TIME (%)
RED	6	10	30
YELLOW	6	22	5
GREEN	6	12	65
YELLOW ARROW	2	10	5
GREEN ARROW	2	5	10
PED. SIGNAL	2	25	100

DOUGLAS STREET			
INDICATION	NUMBER	WATTAGE EACH	BURN TIME (%)
RED	5	10	60
YELLOW ARROW	5	10	5
GREEN ARROW	5	5	35

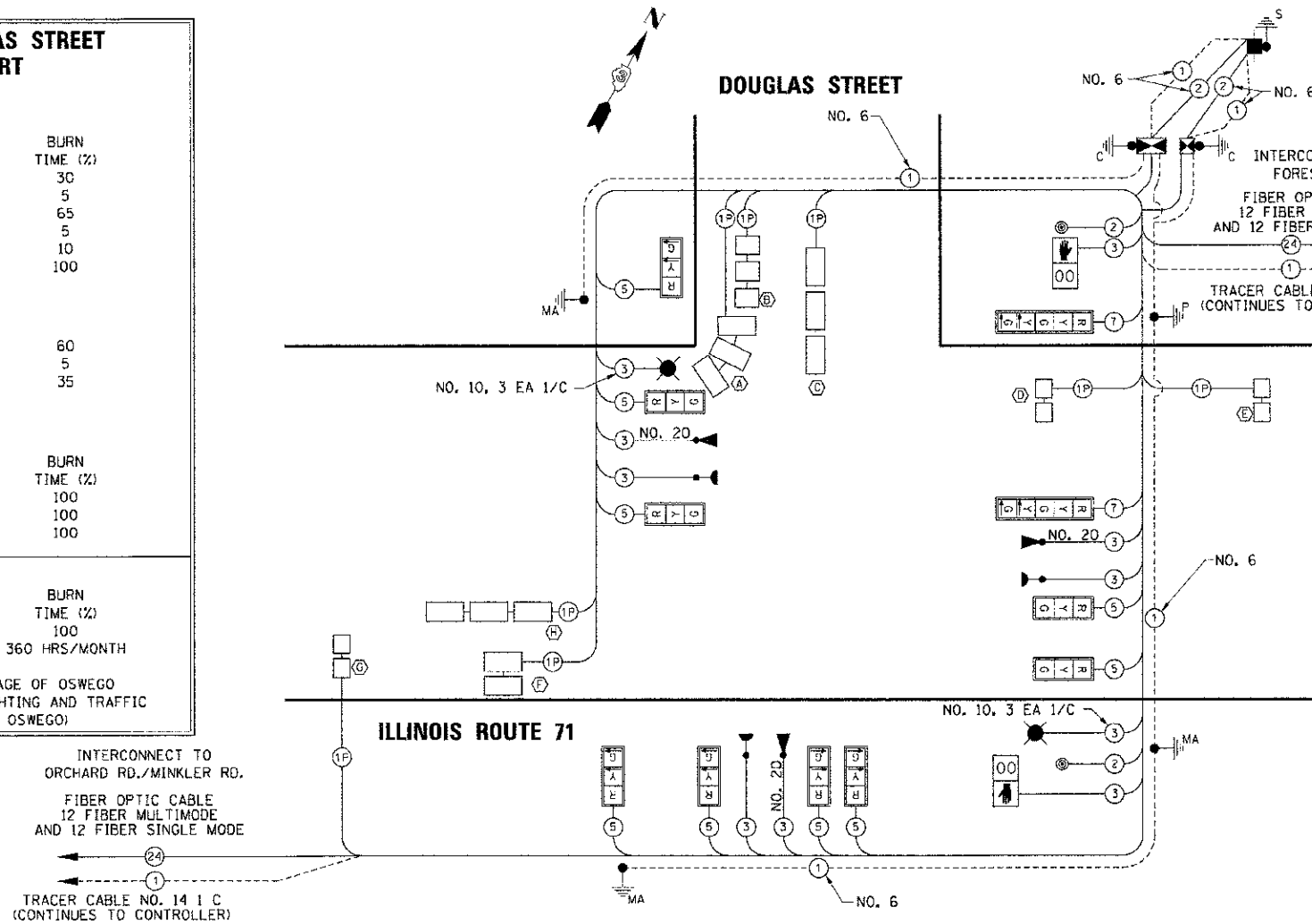
TRAFFIC SIGNAL CABINET			
ITEM	NUMBER	WATTAGE EACH	BURN TIME (%)
CONTROLLER	1	6	100
LOOP DETECTORS	7	4	100
UPS	1	50	100

HIGHWAY LIGHTING			
ITEM	NUMBER	WATTAGE EACH	BURN TIME (%)
CONTROLLER	1	6	100
LUMINAIRE	2	250	360 HRS/MONTH

AGENCY RESPONSIBLE FOR ENERGY CHARGES: VILLAGE OF OSWEGO
(NOTE: SEPERATE ENERGY BILLS FOR HIGHWAY LIGHTING AND TRAFFIC SIGNALS SHALL BE SUBMITTED TO THE VILLAGE OF OSWEGO)

SCHEDULE OF QUANTITIES

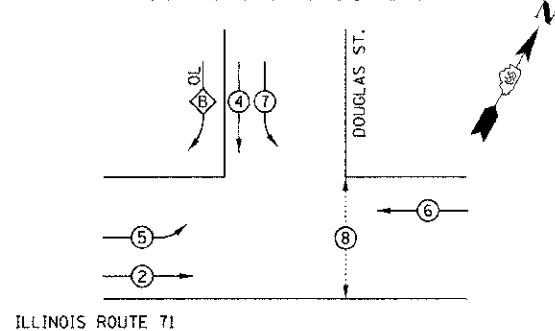
CHANGEABLE MESSAGE SIGN	CAL MO 2
SIGN PANEL - TYPE 1	SO FT 14
SIGN PANEL - TYPE 2	SO FT 25
ELECTRIC SERVICE INSTALLATION	EACH 1
SERVICE INSTALLATION-GROUND MOUNTED	EACH 1
UNDERGROUND CONDUIT, PVC, 1" DIA.	FOOT 289
UNDERGROUND CONDUIT, PVC, 2" DIA.	FOOT 1004
UNDERGROUND CONDUIT, PVC, 2 1/2" DIA.	FOOT 20
UNDERGROUND CONDUIT, PVC, 3" DIA.	FOOT 44
UNDERGROUND CONDUIT, PVC, 4" DIA.	FOOT 597
HANDHOLE, PORTLAND CEMENT CONCRETE	EACH 6
DOUBLE HANDHOLE, PORTLAND CEMENT CONCRETE	EACH 1
ELECTRIC CABLE IN CONDUIT, 600V (XLP-TYPE USE) 1/C NO. 10	FOOT 1,359
LUMINAIRE, SODIUM VAPOR, HORIZONTAL MOUNT, 250 WATT	EACH 2
LIGHTING CONTROLLER, PEDESTAL MOUNTED, 240 VOLT, 60 AMP	EACH 1
FULL-ACTUATED CONTROLLER AND TYPE IV CABINET, SPECIAL UNINTERRUPTIBLE POWER SUPPLY, EXTENDED	EACH 1
TRANSCEIVER - FIBER OPTIC	EACH 1
ELECTRIC CABLE IN CONDUIT, SIGNAL NO. 14 2C	FOOT 205
ELECTRIC CABLE IN CONDUIT, SIGNAL NO. 14 3C	FOOT 983
ELECTRIC CABLE IN CONDUIT, SIGNAL NO. 14 5C	FOOT 2,290
ELECTRIC CABLE IN CONDUIT, SIGNAL NO. 14 7C	FOOT 274
ELECTRIC CABLE IN CONDUIT, LEAD-IN, NO. 14 1 PAIR	FOOT 2,664
ELECTRIC CABLE IN CONDUIT, SERVICE, NO. 6 2 C	FOOT 100
TRAFFIC SIGNAL POST, GALVANIZED STEEL 16 FT.	EACH 1
STEEL MAST ARM ASSEMBLY AND POLE, 42 FT.	EACH 1
STEEL COMBINATION MAST ARM ASSEMBLY AND POLE 48 FT.	EACH 1
STEEL COMBINATION MAST ARM ASSEMBLY AND POLE 50 FT.	EACH 1
CONCRETE FOUNDATION, TYPE A	FOOT 4
CONCRETE FOUNDATION, TYPE C	FOOT 8
CONCRETE FOUNDATION, TYPE E 36-INCH DIAMETER	FOOT 45
SIGNAL HEAD, POLYCARBONATE, LED, 1-FACE, 3-SECTION, BRACKET MOUNTED	EACH 2
SIGNAL HEAD, POLYCARBONATE, LED, 1-FACE, 3-SECTION, MAST ARM MOUNTED	EACH 7
SIGNAL HEAD, POLYCARBONATE, LED, 1-FACE, 5-SECTION, BRACKET MOUNTED	EACH 1
SIGNAL HEAD, POLYCARBONATE, LED, 1-FACE, 5-SECTION, MAST ARM MOUNTED	EACH 1
PEDESTRIAN SIGNAL HEAD, LED 1-FACE, BRACKET MOUNTED WITH COUNTDOWN TIMER	EACH 2
TRAFFIC SIGNAL BACKPLATE, LOUVERED, FORMED PLASTIC	EACH 11
INDUCTIVE LOOP DETECTOR	EACH 8
DETECTOR LOOP, TYPE I	FOOT 1,215
LIGHT DETECTOR	EACH 3
LIGHT DETECTOR AMPLIFIER	EACH 1
PEDESTRIAN PUSH-BUTTON	EACH 2
ELECTRIC CABLE IN CONDUIT, EQUIPMENT GROUNDING CONDUCTOR, NO. 6 1C	FOOT 625
ELECTRIC CABLE IN CONDUIT, NO. 20 3/C TWISTED SHIELD	FOOT 761



CABLE DIAGRAM LEGEND

EXISTING	PROPOSED	DESCRIPTION
[Symbol]	[Symbol]	TRAFFIC SIGNAL CONTROLLER TYPE SHALL BE <i>ECONOMILITE</i>
[Symbol]	[Symbol]	LIGHTING CONTROLLER CABINET
[Symbol]	[Symbol]	SERVICE INSTALLATION, GROUND MOUNTED
[Symbol]	[Symbol]	VEHICLE DETECTOR, INDUCTION LOOP
[Symbol]	[Symbol]	LIGHT DETECTOR
[Symbol]	[Symbol]	CONFIRMATION BEACON
[Symbol]	[Symbol]	DENOTES NUMBER OF CONDUCTORS, ALL CABLE NO. 14 EXCEPT AS INDICATED. ALL LOOP DETECTOR CABLE TO BE SHIELDED.
[Symbol]	[Symbol]	LIGHTING UNIT
[Symbol]	[Symbol]	12" TRAFFIC SIGNAL SECTION
[Symbol]	[Symbol]	SIGNAL FACE WITH BACKPLATE. "P" INDICATES PROGRAMMED HEAD.
[Symbol]	[Symbol]	12" PEDESTRIAN SIGNAL SECTION WITH COUNTDOWN TIMER & SIGN R10-3E
[Symbol]	[Symbol]	PEDESTRIAN PUSHBUTTON DETECTOR TYPE 4EVR
[Symbol]	[Symbol]	GROUND CABLE ROD AT HANDHOLE (H), DOUBLE HANDHOLE (HH), OR CONTROLLER (C)
[Symbol]	[Symbol]	GROUND ROD AT POST (P) OR MAST ARM (MA)
[Symbol]	[Symbol]	GROUND ROD AT ELECTRIC SERVICE INSTALLATION

CONTROLLER SEQUENCE



LEGEND

[Symbol]	VEHICULAR PHASE
[Symbol]	RIGHT-TURN OVERLAP
[Symbol]	PEDESTRIAN PHASE
[Symbol]	NUMBER REFERRING TO ASSOCIATED PHASE

PHASE DESIGNATION DIAGRAM

OVERLAP PHASE
B = 5
PROTECTED PHASE

ILLINOIS ROUTE 71 AT DOUGLAS STREET DETECTOR LOOP INDUCTANCE CHART

LOOP SYSTEM	PHASE	LABEL	NO. OF TURNS	INDUCTANCE (MICROHENRIES)	FREQUENCY (HERTZ)	J PIN STATUS
A	B	SBRT FR	4	822	21,288	ON
B	B	SBRT BK	4	624	24,433	ON
C	7	SBLT	4	675	23,492	ON
D	6	WB STBR	4	530	26,511	OFF
E	6	WB FAR	6	611	24,691	ON
F	2	EB STBR	4	575	25,452	OFF
G	2	EB FAR	6	664	23,685	ON
H	5	EBLT	4	835	21,121	ON

NOTES:

- A SELF ADHERING PHASING DIAGRAM SHALL BE PLACED INSIDE THE CABINET DOOR.
- FIBER OPTIC CABLE NEEDS DIRECTION AND ASSIGNMENT NUMBER ON EACH FIBER CABLE.
- LIGHTING CABLES SHALL BE RUN IN CONDUIT THAT IS SEPERATE FROM THE TRAFFIC SIGNAL CONDUIT.

REVISIONS	
NAME	DATE

ILLINOIS DEPARTMENT OF TRANSPORTATION

TRAFFIC SIGNAL CABLE PLAN IL RTE 71 DOUGLAS STREET

SCALE: N.T.S.
DATE: 7/9/2012

DRAWN BY: NMR
CHECKED BY: DJL