

F.A.P. NO.	SECTION	COUNTY	TOTAL SHEETS	SHEET NO.
311	01-11R	KENDALL	514	378
STA.	TO STA.			
FED. ROAD DIST. NO.	ILLINOIS	FED. AID PROJECT		

ILLINOIS ROUTE 71 AT FOREST AVE. ELECTRICAL LOAD CHART

ILLINOIS ROUTE 71			
INDICATION	NUMBER	WATTAGE EACH	BURN TIME (%)
RED	10	10	35
YELLOW	10	22	5
GREEN	10	12	60
YELLOW ARROW	4	10	5
GREEN ARROW	4	5	10
PED. SIGNAL	4	25	100

FOREST AVE.			
INDICATION	NUMBER	WATTAGE EACH	BURN TIME (%)
RED	6	10	75
YELLOW	6	22	5
GREEN	6	12	15
YELLOW ARROW	4	10	5
GREEN ARROW	4	5	10
PED. SIGNAL	2	25	100

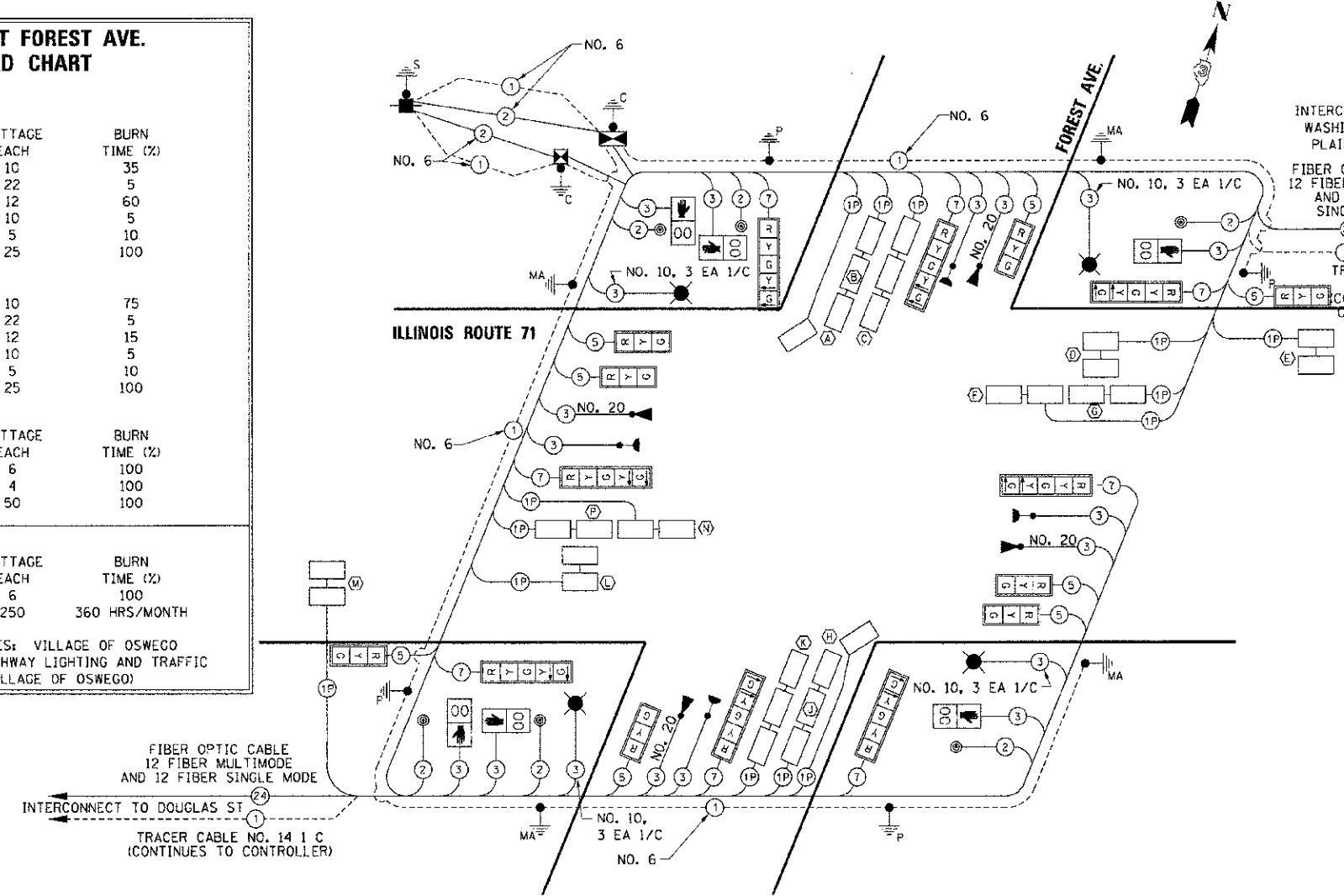
TRAFFIC SIGNAL CABINET			
ITEM	NUMBER	EACH	BURN TIME (%)
CONTROLLER	1	6	100
LOOP DETECTORS	14	4	100
UPS	1	50	100

HIGHWAY LIGHTING			
ITEM	NUMBER	WATTAGE EACH	BURN TIME (%)
CONTROLLER	1	6	100
LUMINAIRE	4	250	360 HRS/MONTH

AGENCY RESPONSIBLE FOR ENERGY CHARGES: VILLAGE OF OSWEGO
 (NOTE: SEPARATE ENERGY BILLS FOR HIGHWAY LIGHTING AND TRAFFIC SIGNALS SHALL BE SUBMITTED TO THE VILLAGE OF OSWEGO)

SCHEDULE OF QUANTITIES

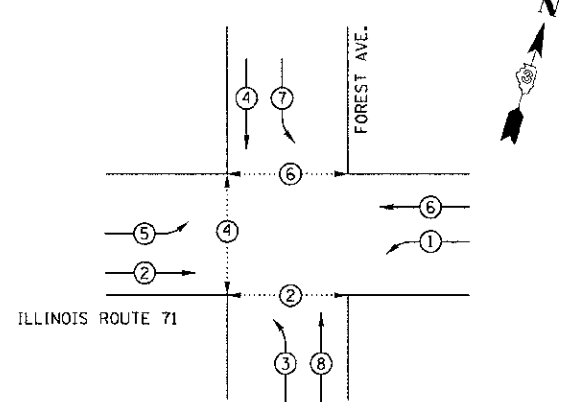
SIGN PANEL - TYPE 1	SO FT	38
SIGN PANEL - TYPE 2	SO FT	23
ELECTRIC SERVICE INSTALLATION	EACH	1
SERVICE INSTALLATION-GROUND MOUNTED	EACH	1
UNDERGROUND CONDUIT, PVC, 1" DIA.	FOOT	688
UNDERGROUND CONDUIT, PVC, 2" DIA.	FOOT	1086
UNDERGROUND CONDUIT, PVC, 2 1/2" DIA.	FOOT	60
UNDERGROUND CONDUIT, PVC, 3" DIA.	FOOT	113
UNDERGROUND CONDUIT, PVC, 4" DIA.	FOOT	702
HANDHOLE, PORTLAND CEMENT CONCRETE	EACH	5
DOUBLE HANDHOLE, PORTLAND CEMENT CONCRETE	EACH	1
ELECTRIC CABLE IN CONDUIT, 600V (XLP-TYPE USE) 1/C NO. 10	FOOT	2,787
LUMINAIRE, SODIUM VAPOR, HORIZONTAL MOUNT, 250 WATT	EACH	4
LIGHTING CONTROLLER, PEDESTAL MOUNTED, 240 VOLT, 60 AMP	EACH	1
MAINTENANCE OF EXISTING TRAFFIC SIGNAL INSTALLATION	EACH	1
FULL-ACTUATED CONTROLLER AND TYPE IV CABINET, SPECIAL	EACH	1
UNINTERRUPTIBLE POWER SUPPLY, EXTENDED	EACH	1
TRANSCEIVER - FIBER OPTIC	EACH	1
ELECTRIC CABLE IN CONDUIT, SIGNAL NO. 14 2C	FOOT	885
ELECTRIC CABLE IN CONDUIT, SIGNAL NO. 14 3C	FOOT	1,906
ELECTRIC CABLE IN CONDUIT, SIGNAL NO. 14 5C	FOOT	1,733
ELECTRIC CABLE IN CONDUIT, SIGNAL NO. 14 7C	FOOT	1,671
ELECTRIC CABLE IN CONDUIT, LEAD-IN, NO. 14 1 PAIR	FOOT	3,486
ELECTRIC CABLE IN CONDUIT, SERVICE, NO. 6 2 C	FOOT	100
TRAFFIC SIGNAL POST, GALVANIZED STEEL 16 FT.	EACH	4
STEEL COMBINATION MAST ARM ASSEMBLY AND POLE 50 FT.	EACH	2
STEEL COMBINATION MAST ARM ASSEMBLY AND POLE 54 FT.	EACH	1
STEEL COMBINATION MAST ARM ASSEMBLY AND POLE 55 FT.	EACH	1
CONCRETE FOUNDATION, TYPE A	FOOT	16
CONCRETE FOUNDATION, TYPE C	FOOT	8
CONCRETE FOUNDATION, TYPE E 36-INCH DIAMETER	FOOT	66
SIGNAL HEAD, POLYCARBONATE, LED, 1-FACE, 3-SECTION, BRACKET MOUNTED	EACH	2
SIGNAL HEAD, POLYCARBONATE, LED, 1-FACE, 3-SECTION, MAST ARM MOUNTED	EACH	6
SIGNAL HEAD, POLYCARBONATE, LED, 1-FACE, 5-SECTION, BRACKET MOUNTED	EACH	4
SIGNAL HEAD, POLYCARBONATE, LED, 1-FACE, 5-SECTION, MAST ARM MOUNTED	EACH	4
PEDESTRIAN SIGNAL HEAD, LED 1-FACE, BRACKET MOUNTED WITH COUNTDOWN TIMER	EACH	6
TRAFFIC SIGNAL BACKPLATE, LOUVERED, FORMED PLASTIC	EACH	16
INDUCTIVE LOOP DETECTOR	EACH	14
DETECTOR LOOP, TYPE I	FOOT	2,091
LIGHT DETECTOR	EACH	4
LIGHT DETECTOR AMPLIFIER	EACH	1
PEDESTRIAN PUSH-BUTTON	EACH	6
TEMPORARY TRAFFIC SIGNAL INSTALLATION	EACH	1
REMOVE EXISTING TRAFFIC SIGNAL EQUIPMENT	EACH	1
REMOVE EXISTING HANDHOLE	EACH	4
REMOVE EXISTING CONCRETE FOUNDATION	EACH	1
ELECTRIC CABLE IN CONDUIT, EQUIPMENT GROUNDING CONDUCTOR, NO. 6 1C	FOOT	774
ELECTRIC CABLE IN CONDUIT, NO. 20 3/C TWISTED SHIELD	FOOT	963



CABLE DIAGRAM LEGEND

EXISTING	PROPOSED	DESCRIPTION
[Symbol]	[Symbol]	TRAFFIC SIGNAL CONTROLLER TYPE SHALL BE <i>ECONALITE</i>
[Symbol]	[Symbol]	LIGHTING CONTROLLER CABINET
[Symbol]	[Symbol]	SERVICE INSTALLATION, GROUND MOUNTED
[Symbol]	[Symbol]	VEHICLE DETECTOR, INDUCTION LOOP
[Symbol]	[Symbol]	LIGHT DETECTOR
[Symbol]	[Symbol]	CONFIRMATION BEACON
[Symbol]	[Symbol]	DENOTES NUMBER OF CONDUCTORS. ALL CABLE NO. 14 EXCEPT AS INDICATED. ALL LOOP DETECTOR CABLE TO BE SHIELDED.
[Symbol]	[Symbol]	LIGHTING UNIT
[Symbol]	[Symbol]	12" TRAFFIC SIGNAL SECTION
[Symbol]	[Symbol]	SIGNAL FACE WITH BACKPLATE. "P" INDICATES PROGRAMMED HEAD.
[Symbol]	[Symbol]	12" PEDESTRIAN SIGNAL SECTION WITH COUNTDOWN TIMER & SIGN R10-3E
[Symbol]	[Symbol]	PEDESTRIAN PUSHBUTTON DETECTOR TYPE 4EVR
[Symbol]	[Symbol]	GROUND CABLE ROD AT HANDHOLE (H), DOUBLE HANDHOLE (HD), OR CONTROLLER (C)
[Symbol]	[Symbol]	GROUND ROD AT POST (P) OR MAST ARM (MA)
[Symbol]	[Symbol]	GROUND ROD AT ELECTRIC SERVICE INSTALLATION

CONTROLLER SEQUENCE



LEGEND

[Symbol]	VEHICULAR PHASE
[Symbol]	RIGHT-TURN OVERLAP
[Symbol]	PEDESTRIAN PHASE
[Symbol]	NUMBER REFERRING TO ASSOCIATED PHASE

PHASE DESIGNATION DIAGRAM

ILLINOIS ROUTE 71 AT FOREST AVE. DETECTOR LOOP INDUCTANCE CHART

LOOP SYSTEM	PHASE	LABEL	NO. OF TURNS	INDUCTANCE (MICROHENRIES)	FREQUENCY (HERTZ)	J PIN STATUS
A	4	SB TH-RT FR	4	484	27.742	ON
B	4	SB TH-RT BK	4	542	26.216	ON
C	7	SBLT	4	802	21.551	ON
D	6	WB STBR	4	559	25.814	OFF
E	6	WB FAR	6	610	24.711	ON
F	1	WBLT FR	4	557	25.860	ON
G	1	WBLT BK	4	559	25.814	ON
H	8	WB TH-RT FR	4	581	25.321	ON
J	8	NB TH-RT BK	4	585	25.234	ON
K	3	NBLT	4	845	20.996	ON
L	2	EB STBR	4	561	25.768	OFF
M	2	EB FAR	6	608	24.752	ON
N	5	EBLT FR	4	558	25.837	ON
P	5	EBLT BK	4	561	25.768	ON

NOTES:

- A SELF ADHERING PHASING DIAGRAM SHALL BE PLACED INSIDE THE CABINET DOOR.
- FIBER OPTIC CABLE NEEDS DIRECTION AND ASSIGNMENT NUMBER ON EACH FIBER CABLE.
- LIGHTING CABLES SHALL BE RUN IN CONDUIT THAT IS SEPARATE FROM THE TRAFFIC SIGNAL CONDUIT.

REVISIONS

NAME	DATE

ILLINOIS DEPARTMENT OF TRANSPORTATION

TRAFFIC SIGNAL CABLE PLAN IL RTE 71 FOREST AVE.

SCALE: N.T.S.
DATE: 7/9/2012

DRAWN BY: NMR
CHECKED BY: DJL