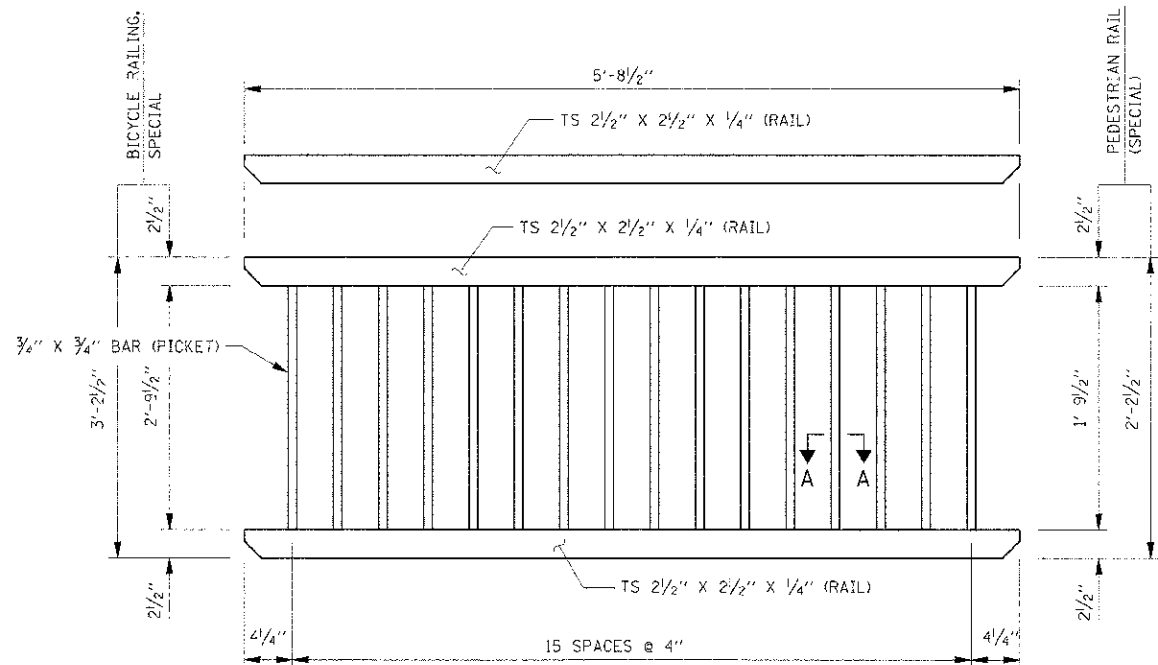
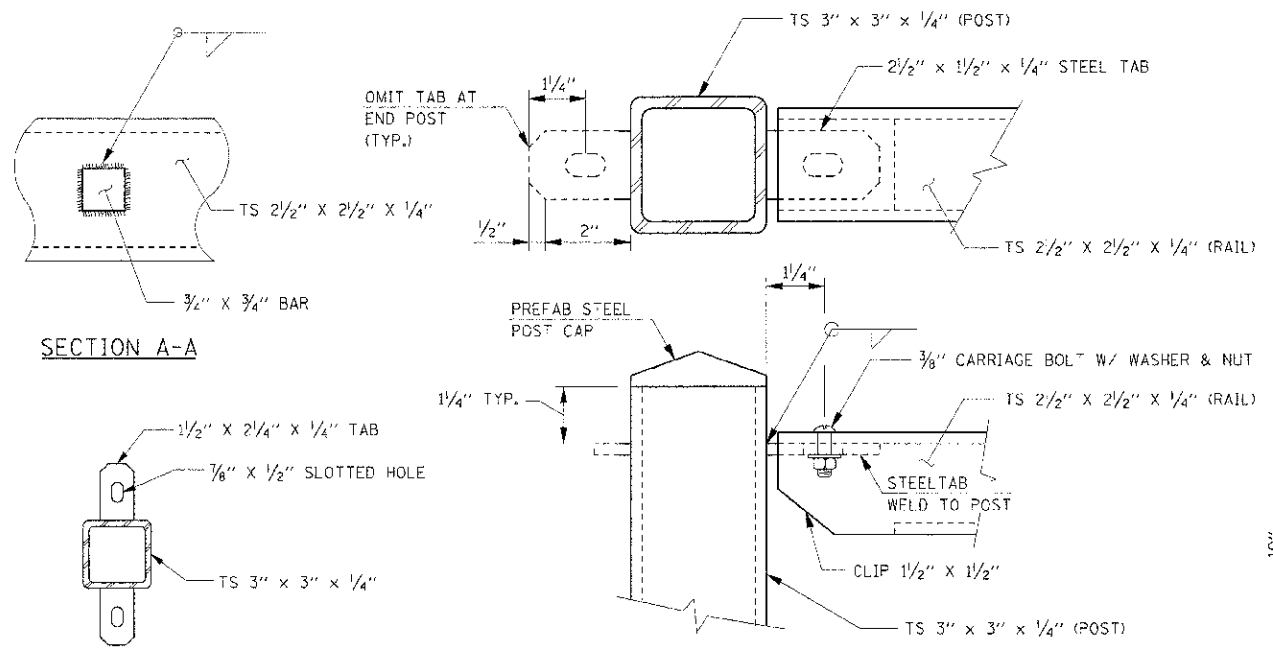


F.A.P. RTE.	SECTION	COUNTY	TOTAL SHEETS	SHEET NO.
311	(1-1) R	KENDALL	514	419
STA.	TO STA.			
FED. ROAD DIST. NO.	ILLINOIS FED. AID PROJECT			

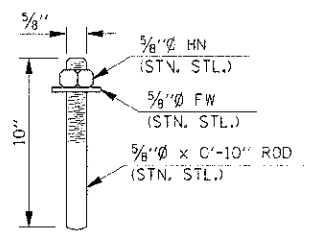


TYPICAL PANEL

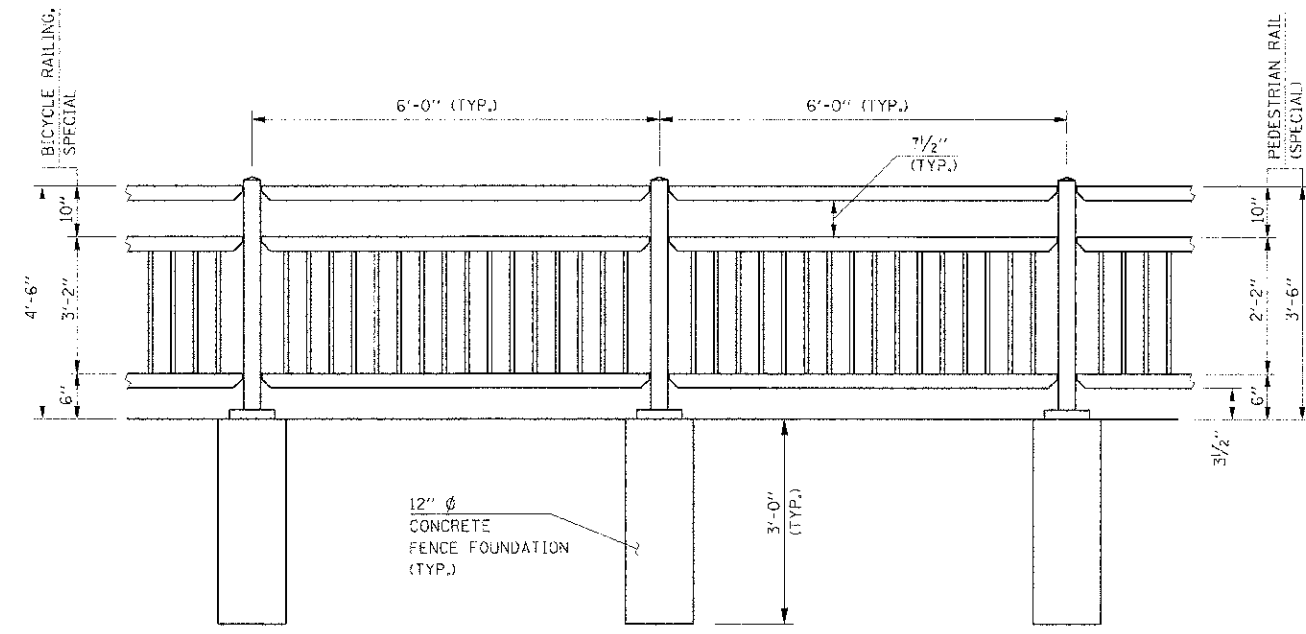


SECTION A-A

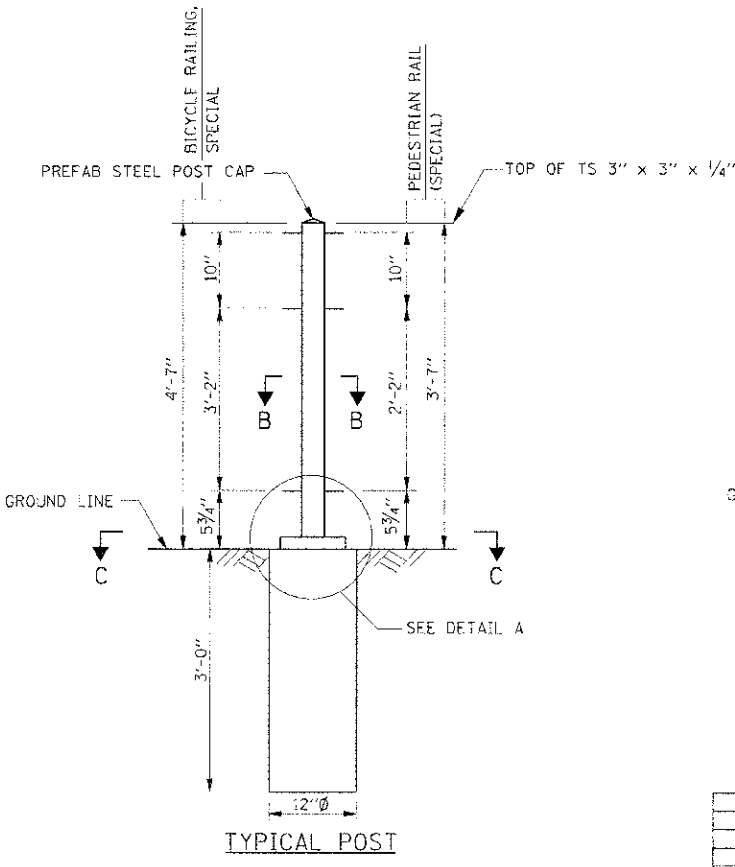
TYPICAL POST CONNECTION (TYPICAL EACH RAIL)



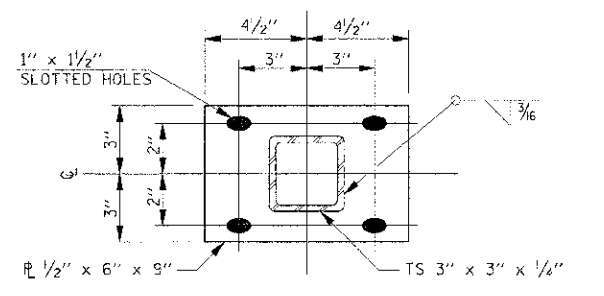
ANCHORS-1AB



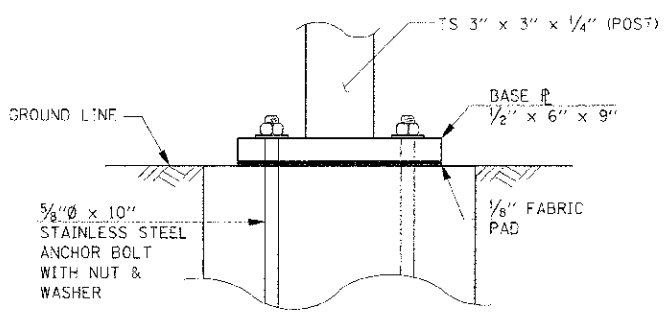
TYPICAL RAIL ELEVATION



TYPICAL POST



SECTION C-C



DETAIL A

NOTES

1. STEEL BARS AND PLATES FOR RAILING SHALL MEET THE REQUIREMENTS OF AASHTO M270, GRADE 50.
2. TUBULAR STEEL POSTS AND RAILS SHALL MEET THE REQUIREMENTS OF ASTM A 500, GRADE B.
3. ALL COMPONENTS SHALL BE HOT-DIP GALVANIZED AFTER FABRICATION.
4. ALL CUT OR CLIPPED EDGES SHALL BE GROUND SMOOTH.
5. CURVED FENCE SECTIONS SHALL BE ACCOMPLISHED BY PLACING FENCE PANELS ALONG CHORDS.
6. BOLTS, WASHERS, AND NUTS SHALL BE STAINLESS STEEL. THREADLOCKER SHALL BE APPLIED TO THREADS OF ALL BOLTS.

POST: TS 3" x 3" x 1/4"
 RAILS: TS 2 1/2" x 2 1/2" x 1/4"
 PICKETS: 3/4" x 3/4" SOLID BAR

• CONCRETE FENCE FTG. SHALL NOT BE PAID FOR SEPARATELY, BUT SHALL BE INCLUDED IN THE COST OF PEDESTRIAN RAIL (SPECIAL) OR BICYCLE RAILING, SPECIAL

REVISIONS	
NAME	DATE

ILLINOIS DEPARTMENT OF TRANSPORTATION
RETAINING WALL – RAIL DETAILS
IL RTE 71
WASHINGTON / PLAINFIELD

SCALE: NTS
 DATE: 7/3/2012
 DRAWN BY: TCS
 CHECKED BY: JRS

IE PROJ: #58562E
 PLOT DATE: 7/3/2012
 FILE NAME: G:\58562E\CAD\17_RAIL_DETAIL_BUSH1