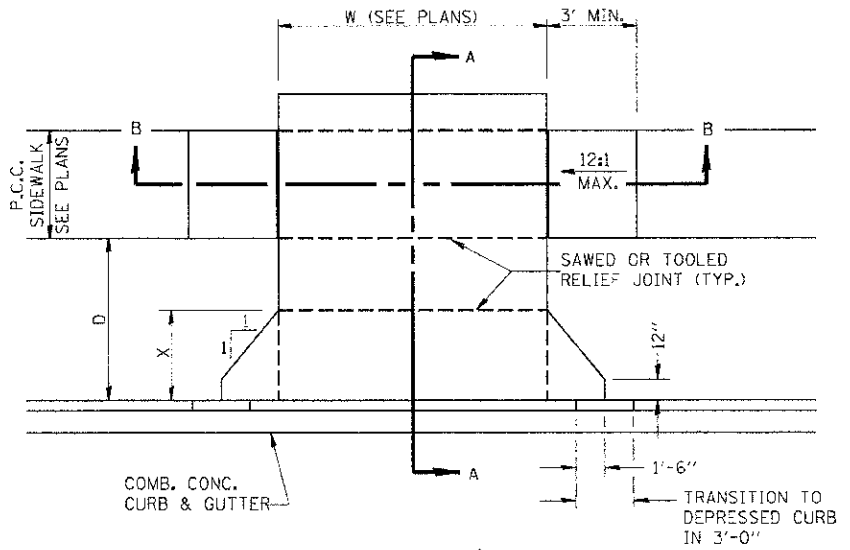
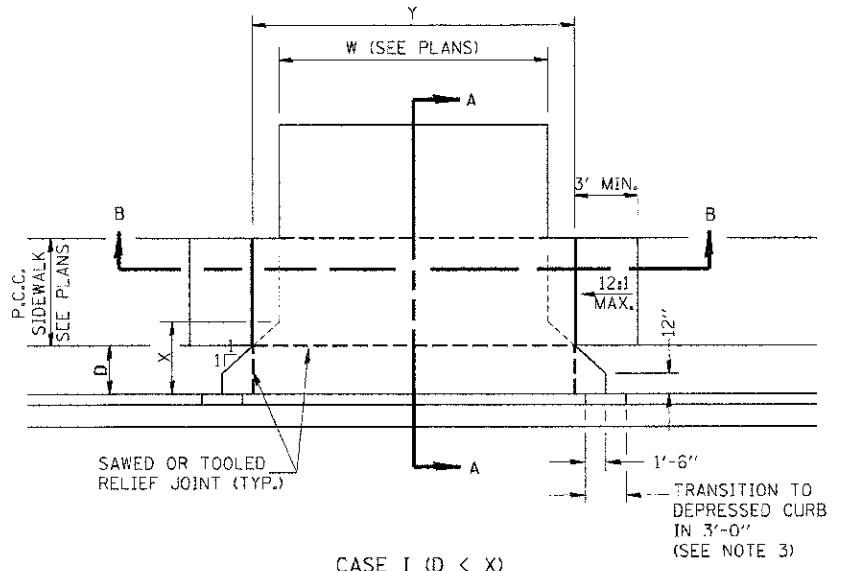


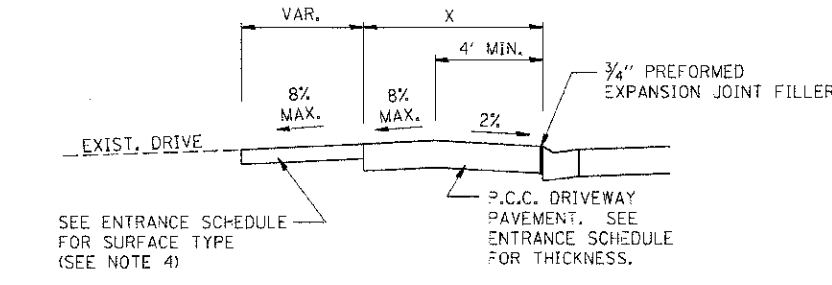
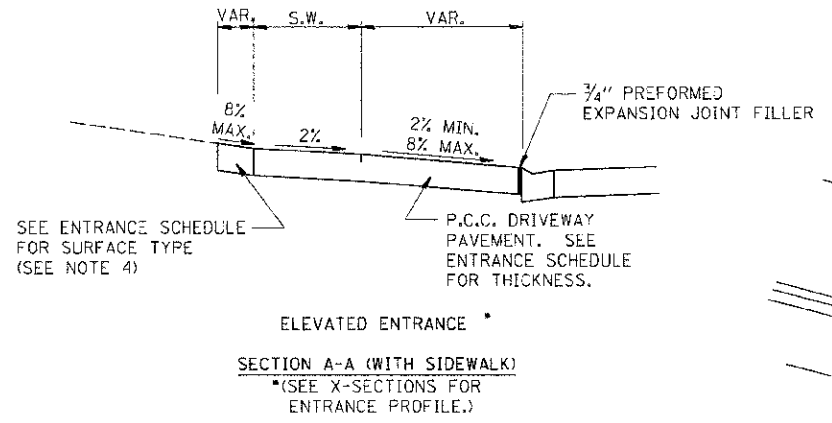
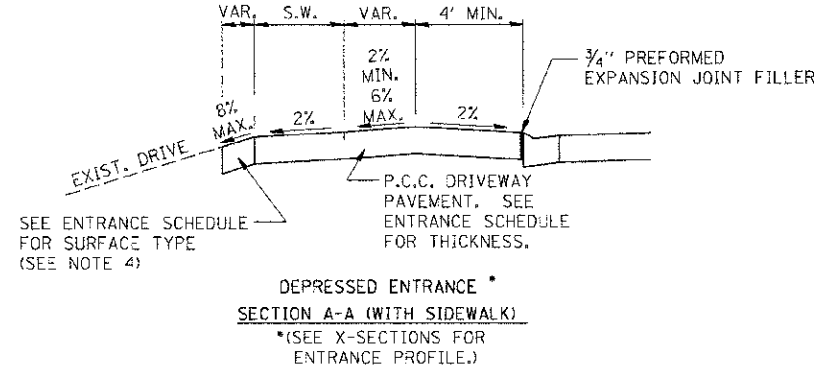
F.A.P. RTE.	SECTION	COUNTY	TOTAL SHEETS	SHEET NO.
3:1	(1-1)R	KENDALL	5:4	435
STA.	TO STA.			
FED. ROAD DIST. NO.	ILLINOIS	FED. AID PROJECT		



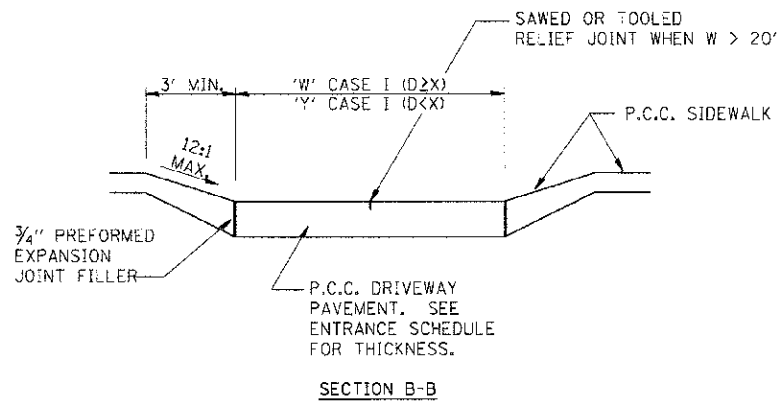
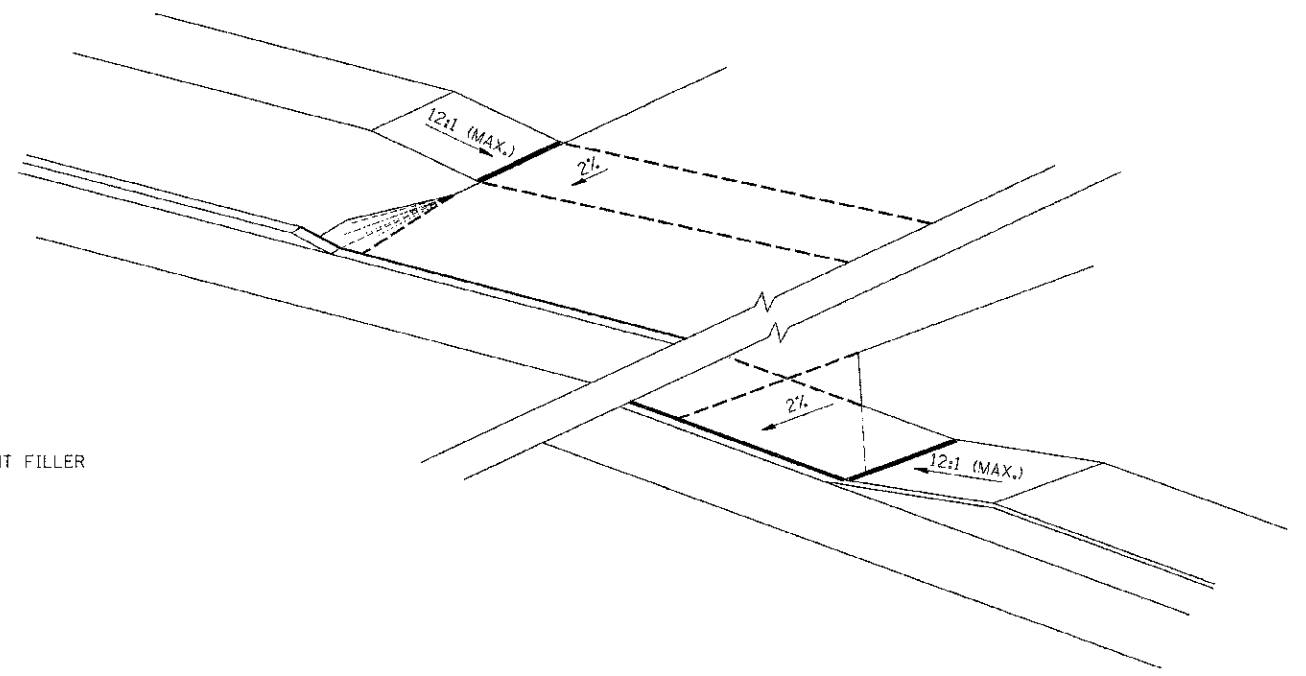
CASE I (D ≥ X)



CASE I (D < X)



ELEVATED OR DEPRESSED ENTRANCE SECTION A-A (WITHOUT SIDEWALK) \* (SEE X-SECTIONS FOR ENTRANCE PROFILE.)



GENERAL NOTES:

- X = 7' (NON-COMMERCIAL) X = 15' (COMMERCIAL)
- COST OF EXPANSION JOINTS AND RELIEF JOINTS SHALL BE INCLUDED IN THE COST OF THE P.C.C. DRIVEWAY PAVEMENT.
- AS THE DIMENSION "D" APPROACHES ZERO, THE TRANSITION TO DEPRESSED CURB SHALL BE NO STEEPER THAN 12:1
- FOR ASPHALT ENTRANCES: USE INCIDENTAL HOT MIX ASPHALT, 2" OVER AGGREGATE BASE COURSE TYPE B, 4"

REVISIONS	
NAME	DATE

ILLINOIS DEPARTMENT OF TRANSPORTATION

**PCC URBAN ENTRANCES**

SCALE: VERT. DATE: 7/5/2012

DRAWN BY: L.P. CHECKED BY: MED

RD PROJ: 3105014  
FILE NAME: P:\CIVIL\JDDT.DISTEN\Gusego\Phase II\BETA\_PCC\_ENT.dgn