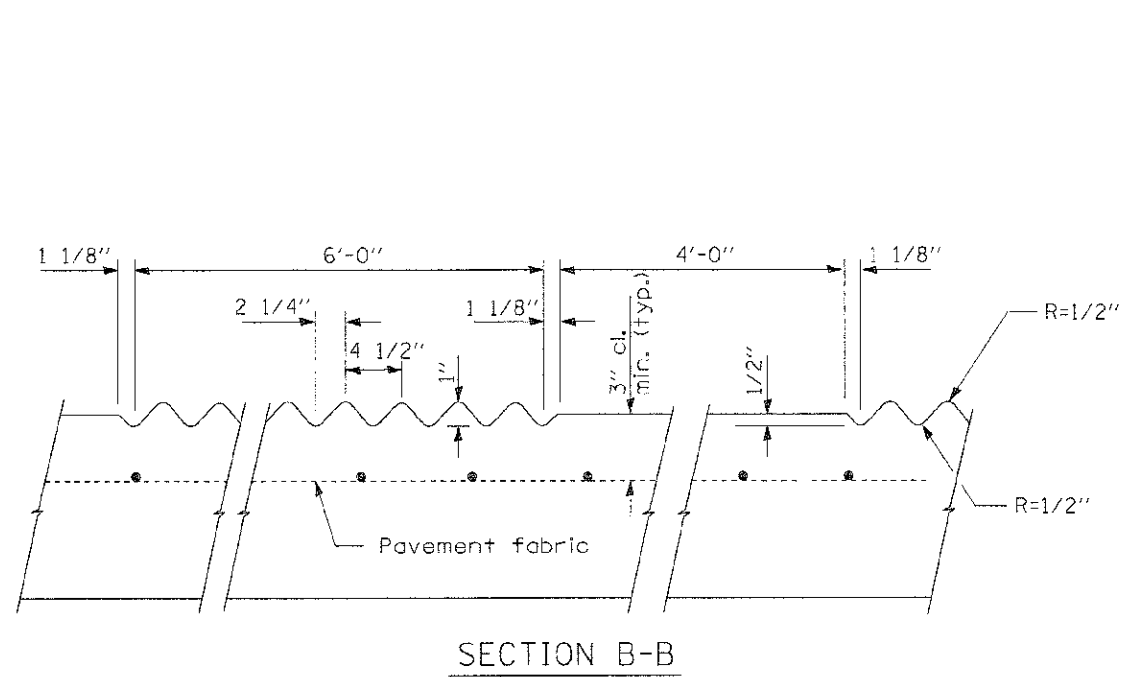
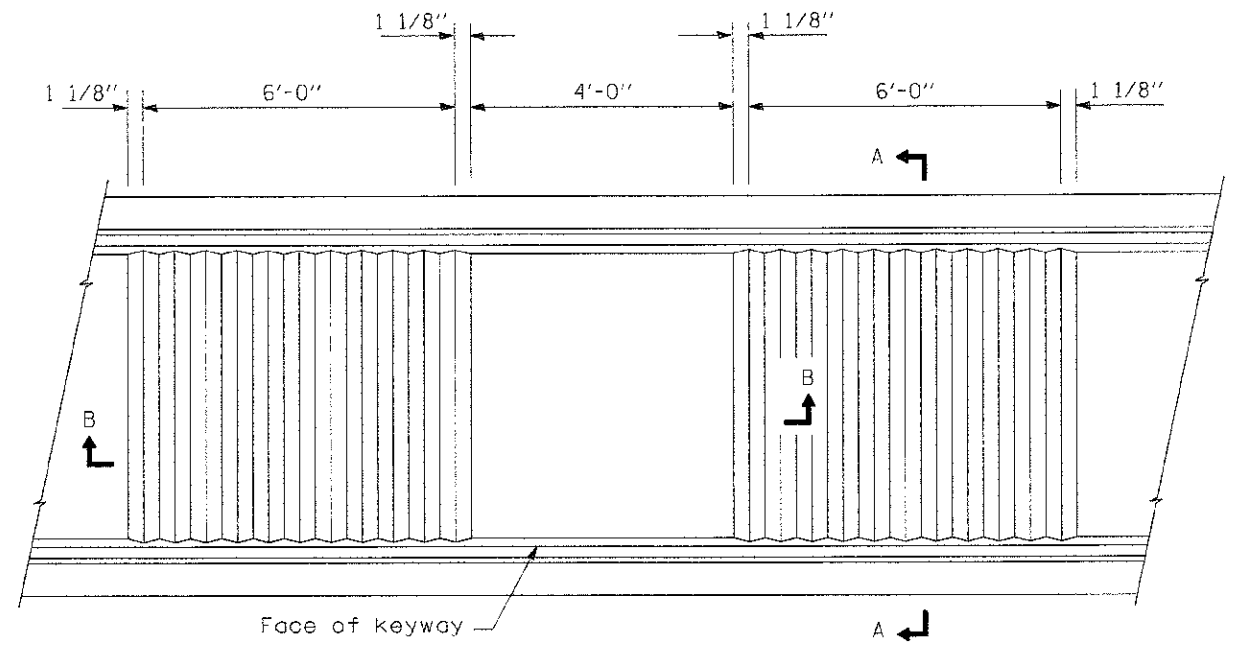


F.A.P. R.E.	SECTION	COUNTY	TOTAL SHEETS	SHEET NO.
311	(1-1)R	KENDALL	514	438
STA.		TO STA.		
FED. ROAD DIST. NO.		ILLINOIS FED. AID PROJECT		



SECTION B-B



PLAN

GENERAL NOTES

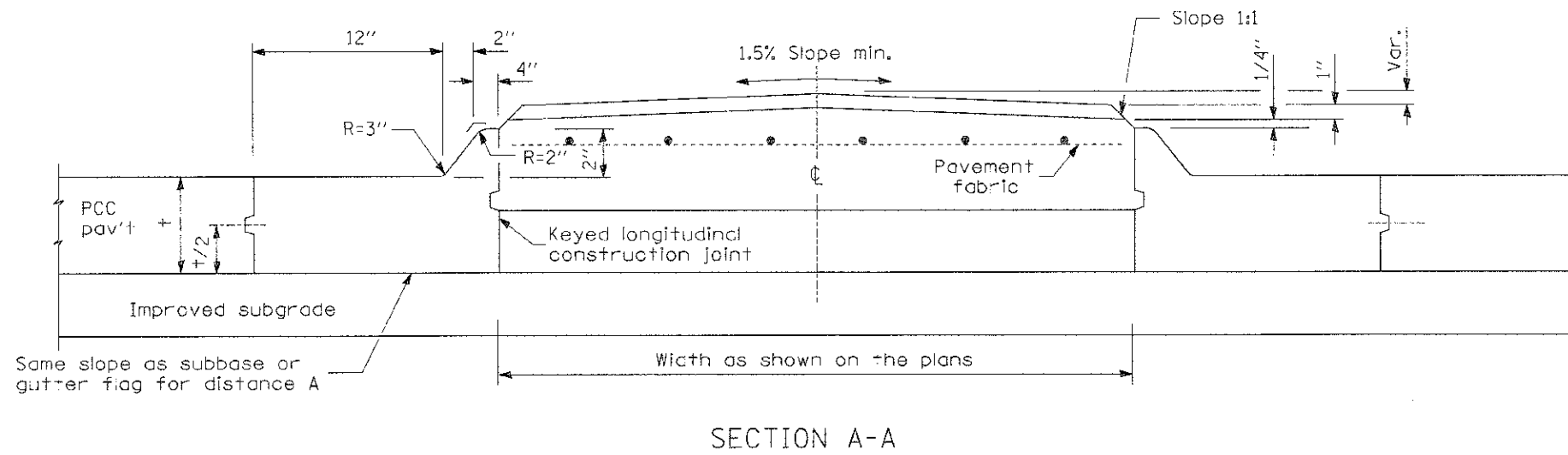
Median layout and radii shall be as shown on the plans.

Keyed longitudinal construction joints shall be constructed without tie bars.

t = Pavement thickness

Fabric required for medians built contiguous to reinforced pcc pavement only.

See Standards 420001, 420701 and 606301 for details not shown.



SECTION A-A

REVISIONS	
NAME	DATE

ILLINOIS DEPARTMENT OF TRANSPORTATION  
**CONCRETE MEDIAN, TYPE M-2.12  
 CORRUGATED (SPECIAL)**

SCALE: VERT. HORIZ. NOT TO SCALE  
 DATE 7/5/2012  
 DRAWN BY SAE  
 CHECKED BY MED

T:\G\_P\REL\11052012\11052012\11052012\DOT\_DIST\3\Drawings\Phase II\DET-MEDIAN.dwg  
 FILE NAME = PAC011A\_11052012