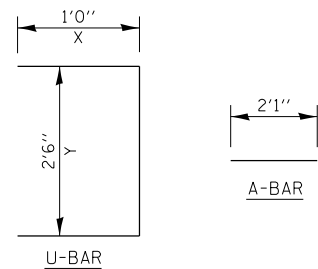
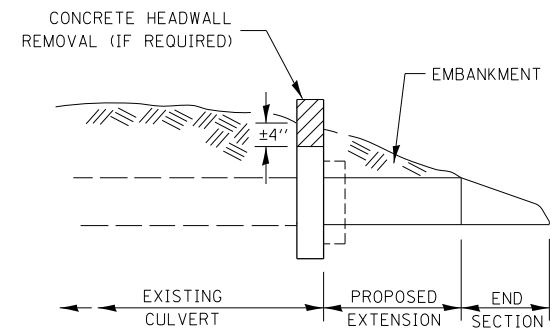
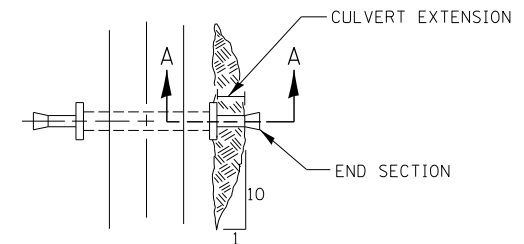


EXPANSION BOLTS SHALL CONSIST OF SELF DRILLING EXPANSION SHIELDS AND 3/4" DIA. HOOKED BOLTS. HOOKED BOLTS SHALL EXTEND A MINIMUM OF 9" INTO NEW CONCRETE. BOLTS SHALL BE DRILLED IN THE CENTER OF THE EXISTING BOX CULVERT BARREL WALLS. MINIMUM CERTIFIED PROOF LOAD = 4,080 LBS.



LOCATION	EXISTING CULVERT SIZE	PIPE DIMENSION	PIPE AREA	EXTENSION COLLAR		A-BAR		U-BAR		CLASS SI CONC. COLLAR	REINFORCEMENT BARS	3/4" DIA. EXPANSION BOLTS
				WIDTH	HEIGHT	305	'X'	'Y'	CU. YD.			
317+76 RT	3'x3'	24"	3.14	36"	36"	25"	12"	30"	.33	18	8	

**COLLAR DETAIL (CMP EXTENSION OF PIPE CULVERT)**



SECTION A-A

**PLAN AT PIPE EXTENSIONS**

FILE NAME =	USER NAME = pletschr	DESIGNED -	REVISED -
ct:\pw\work\p1dot\pletschr\d0300202\0366C14-sht-plnprf.dgn		DRAWN -	REVISED -
Default	PLOT SCALE = 100.0000' / in.	CHECKED -	REVISED -
	PLOT DATE = 10/26/2012	DATE -	REVISED -

STATE OF ILLINOIS  
DEPARTMENT OF TRANSPORTATION

PIPE CULVERT EXTENSION DETAILS

SCALE: SHEET OF SHEETS STA. TO STA.

F.A.P. RTE.	SECTION	COUNTY	TOTAL SHEETS	SHEET NO.
332	(6, K-15d)LI	KANKAKEE	30	19
CONTRACT NO. 66C14				
ILLINOIS FED. AID PROJECT				