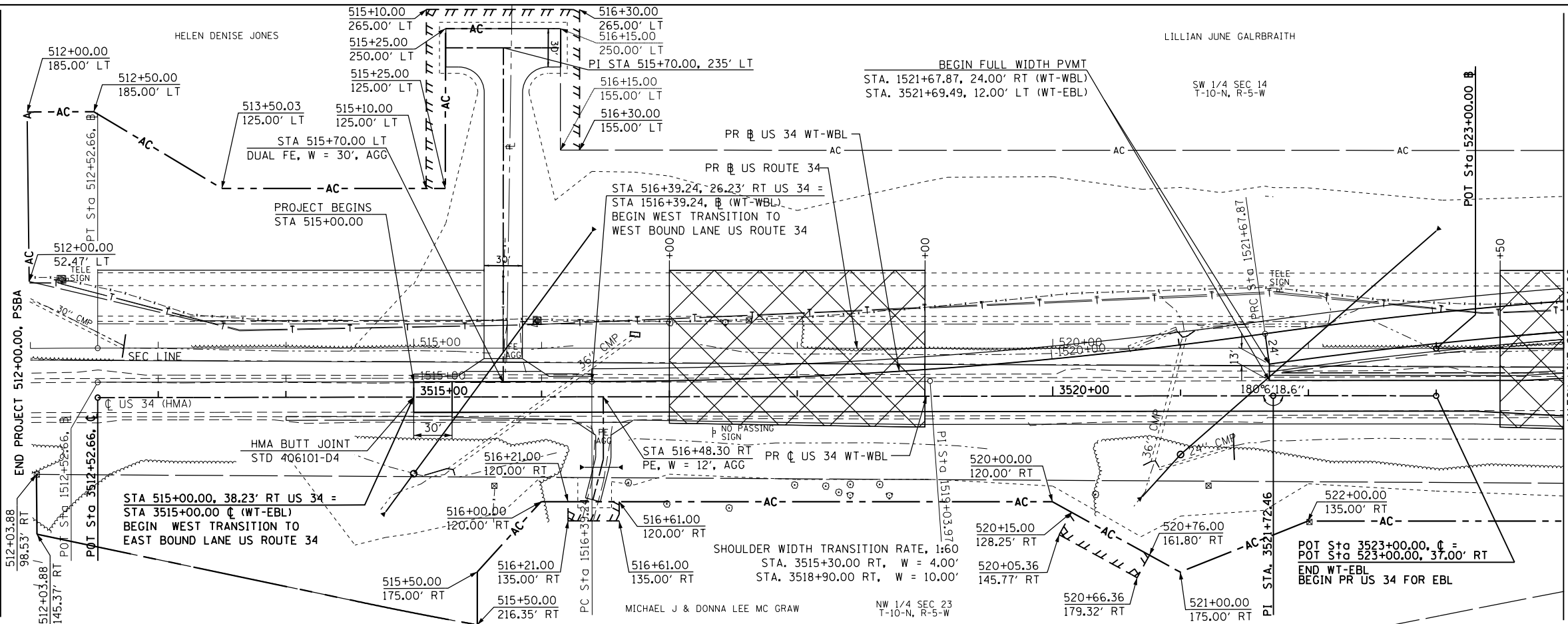


PLAN	SURVEYED	DATE
	PLOTTED	BY
	GRADES CHECKED	
	STRUCTURE NOTATIONS CHECKED	
	NOTE BOOK NO.	
	FILE NAME	

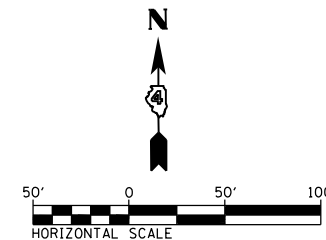
UNSUITABLE SOILS

WT-WBL = WEST TRANSITION TO WESTBOUND LANE  
WT-EBL = WEST TRANSITION TO EASTBOUND LANE

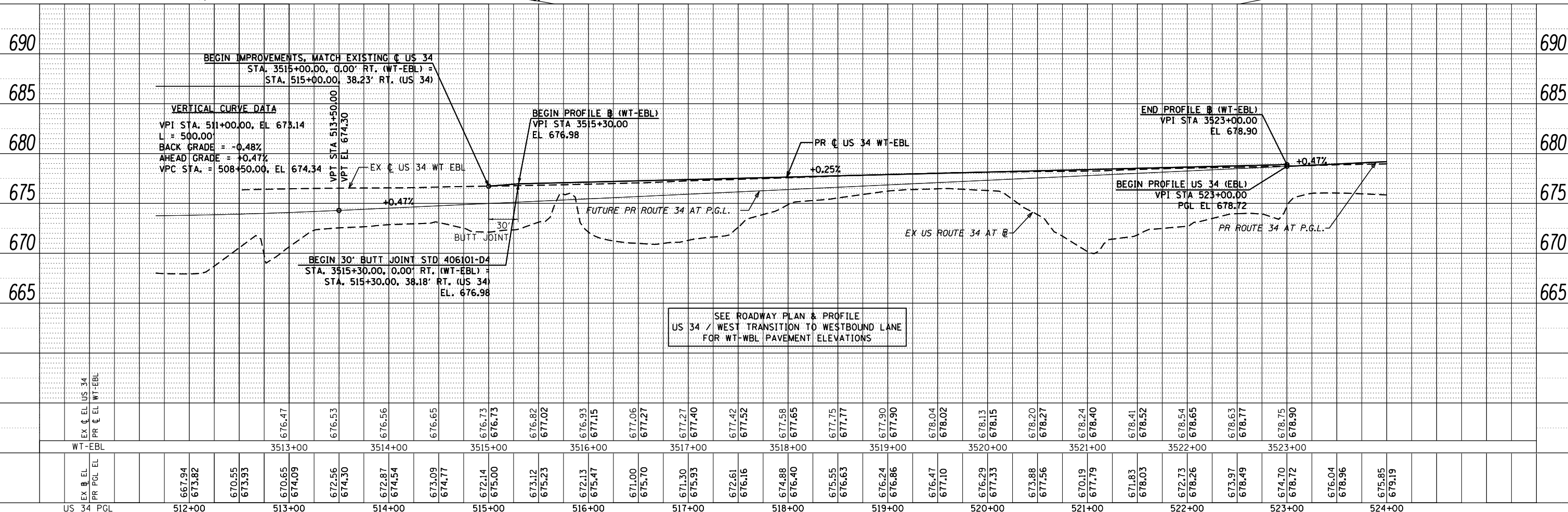


PROP. CURVE WT-WLT-1  
PI STA. = 1519+03.97  
 $\Delta = 7^\circ 55' 44''$  (LT)  
D = 1° 30' 00"  
R = 3,820.00'  
T = 264.74'  
L = 528.63'  
E = 9.16'  
e = N.C. (60 MPH)  
T.R. = N.A.  
S.E. RUN = N.A.  
P.C. STA. = 1516+39.24  
P.T. STA. = 1521+67.87

PROP. CURVE WT-WLT-2  
PI STA. = 1524+36.13  
 $\Delta = 8^\circ 02' 02''$  (RT)  
D = 1° 30' 00"  
R = 3,820.00'  
T = 268.26'  
L = 535.64'  
E = 9.41'  
e = N.C. (60 MPH)  
T.R. = N.A.  
S.E. RUN = N.A.  
P.C. STA. = 1521+67.87  
P.T. STA. = 1527+03.51



PROFILE	SURVEYED	DATE
	PLOTTED	BY
	GRADES CHECKED	
	STRUCTURE NOTATIONS CHECKED	
	NOTE BOOK NO.	
	FILE NAME	



SEE ROADWAY PLAN & PROFILE  
US 34 / WEST TRANSITION TO WESTBOUND LANE  
FOR WT-WBL PAVEMENT ELEVATIONS

FILE NAME =	USER NAME = zech1	DESIGNED - DBS	REVISED -	F.A.P. RTE.	SECTION	COUNTY	TOTAL SHEETS	SHEET NO.
D468409-sh1-01-plnprf-US34-01E.dgn		DRAWN - PSBA	REVISED -	313	7-2 ; 6-1	HENDERSON	976	135
		CHECKED - CSB	REVISED -	ROADWAY PLAN AND PROFILE				CONTRACT NO. 68409
		DATE - 10/2012	REVISED -	US ROUTE 34 - WEST TRANSITION TO EASTBOUND LANE				ILLINOIS FED. AID PROJECT
				SCALE: 1"=50'	SHEET NO. 1 OF 67 SHEETS		STA. 512+00 TO STA. 524+00	