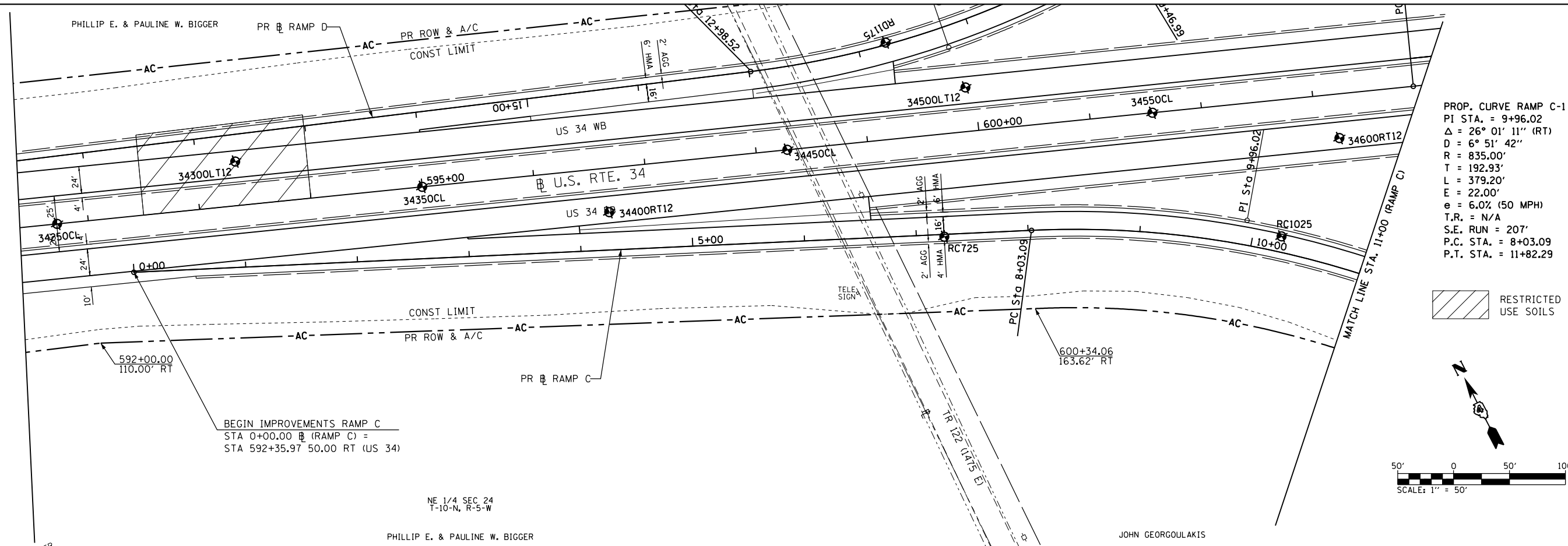
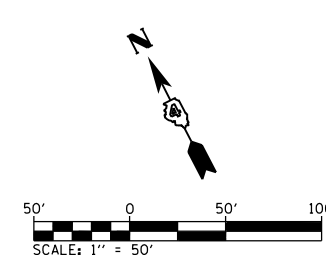


SEE US ROUTE 34
PLAN & PROFILE FOR
LAYOUT INFORMATION



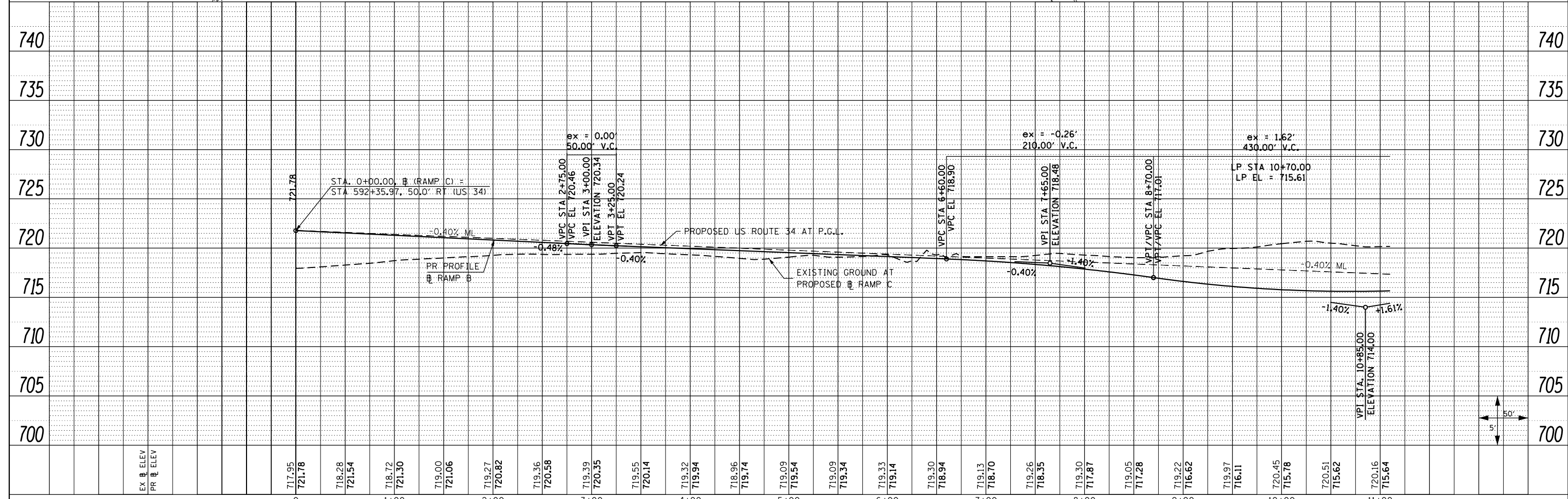
PROP. CURVE RAMP C-1
 PI STA. = 9+96.02
 Δ = 26° 01' 11" (RT)
 D = 6° 51' 42"
 R = 835.00'
 T = 192.93'
 L = 379.20'
 E = 22.00'
 e = 6.0% (50 MPH)
 T.R. = N/A
 S.E. RUN = 207'
 P.C. STA. = 8+03.09
 P.T. STA. = 11+82.29

RESTRICTED
USE SOILS



PLAN	SURVEYED	DATE
	PLOTTED	
	GRADES CHECKED	
	STRUCTURE NOTATIONS CHECKED	
	NOTE BOOK NO.	
	FILE NAME	

PROFILE	SURVEYED	DATE
	PLOTTED	
	GRADES CHECKED	
	STRUCTURE NOTATIONS CHECKED	
	NOTE BOOK NO.	
	FILE NAME	



FILE NAME = D468409-SHT-40-PLNPRF-RAMPC-01.dgn	USER NAME = zech1	DESIGNED - DBS	REVISED -	STATE OF ILLINOIS DEPARTMENT OF TRANSPORTATION	ROADWAY PLAN & PROFILE RAMP C		F.A.P. RTE. 313	SECTION 7-2 ; 6-2	COUNTY HENDERSON	TOTAL SHEETS 976	SHEET NO. 174	
PLOT SCALE = 100.0000' / 1"	CHECKED - CSB	REVISED -	REVISED -		SCALE: 1" = 50'	SHEET NO. 40 OF 67 SHEETS	STA. 0+00 TO STA. 11+00	CONTRACT NO. 68409		ILLINOIS FED. AID PROJECT		
PLOT DATE = 10/16/2012	DATE = 10/2012	REVISED -	REVISED -									