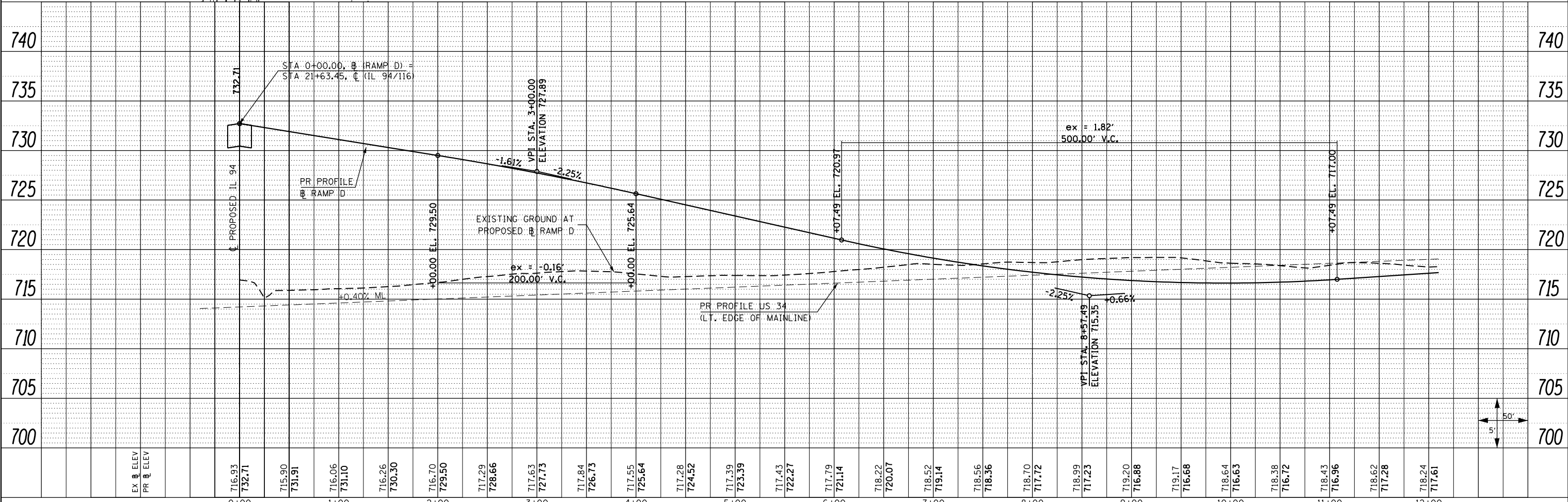
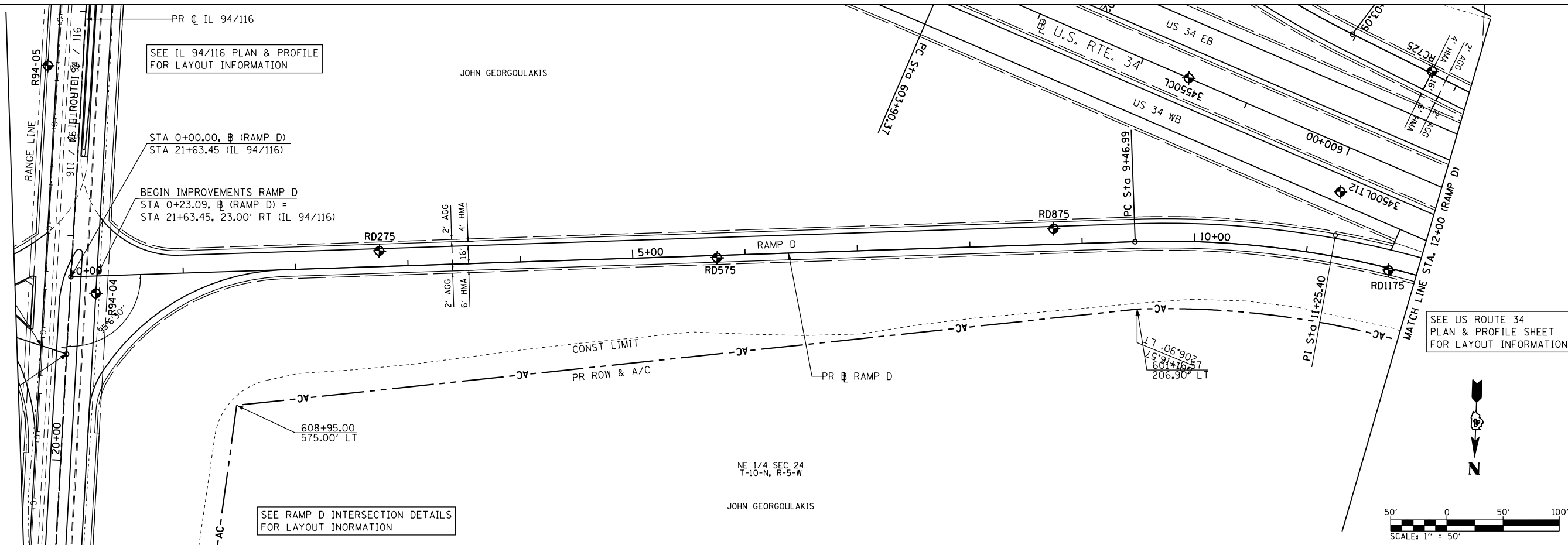


PLAN	SURVEYED	DATE
	PLOTTED	BY
	GRADES CHECKED	
	STRUCTURE NOTATIONS CHECKED	
	NO. _____	

PROFILE	SURVEYED	DATE
	PLOTTED	BY
	GRADES CHECKED	
	STRUCTURE NOTATIONS CHECKED	
	NO. _____	

PROP. CURVE RAMP D-1
 PI STA. = 11+25.40
 $\Delta = 24^\circ 07' 17''$ (RT)
 $D = 6^\circ 51' 42''$
 $R = 835.00'$
 $T = 178.41'$
 $L = 351.53'$
 $E = 18.85'$
 $e = 6.0\%$ (50 MPH)
 T.R. = N/A
 S.E. RUN = 207'
 P.C. STA. = 9+46.99
 P.T. STA. = 12+98.52



FILE NAME = D468409-SHT-42-PLNPRF-RAMPD-01.dgn	USER NAME = zech1	DESIGNED - DBS	REVISED -	STATE OF ILLINOIS DEPARTMENT OF TRANSPORTATION	ROADWAY PLAN & PROFILE RAMP D		F.A.P. RTE. 313	SECTION 7-2 ; 6-2	COUNTY HENDERSON	TOTAL SHEETS 976	SHEET NO. 176	
PLOT SCALE = 100.0000' / 1"	CHECKED - CSB	REVISED -	REVISED -		SCALE: 1" = 50'	SHEET NO. 42 OF 67 SHEETS	STA. 0+00 TO STA. 12+00	CONTRACT NO. 68409				
PLOT DATE = 10/16/2012	DATE - 10/2012	REVISED -	REVISED -		ILLINOIS FED. AID PROJECT							