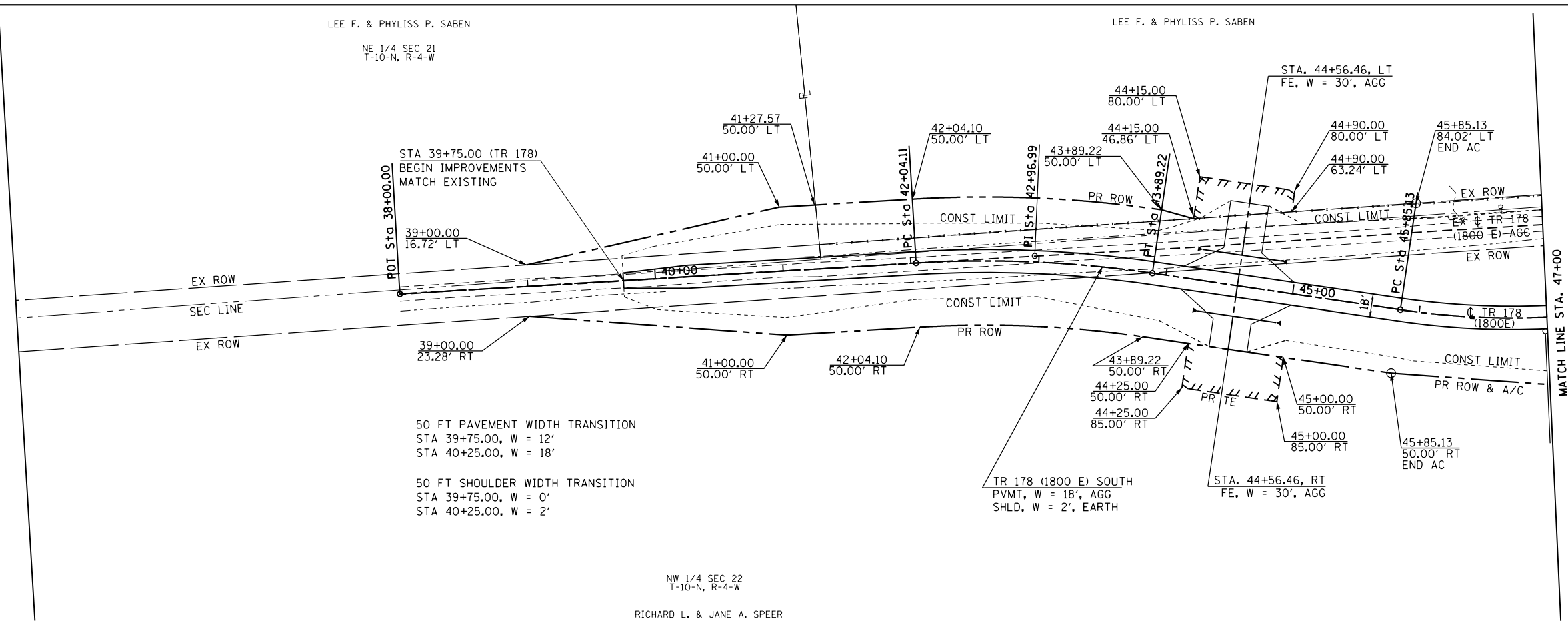


PROP. CURVE TR178-1  
 PI STA. = 42+96.99  
 $\Delta = 11^\circ 47' 03''$  (RT)  
 $D = 6^\circ 21' 58''$   
 $R = 900.00'$   
 $T = 92.89'$   
 $L = 185.12'$   
 $E = 4.78'$   
 $e = 4.00\%$  (30 MPH)  
 $T.R. = 28'$   
 $S.E. RUN = 54'$   
 $P.C. STA. = 42+04.10$   
 $P.T. STA. = 43+89.22$

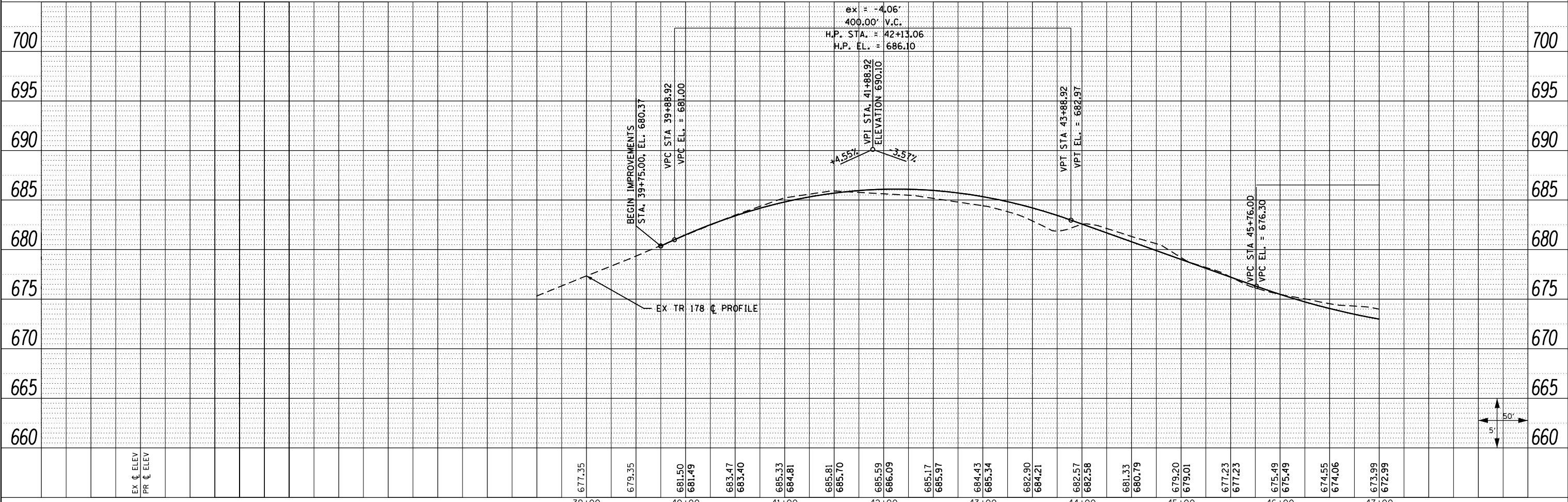
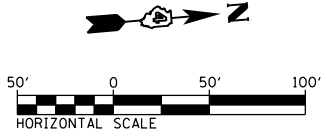
PROP. CURVE TR178-2  
 PI STA. = 46+99.67  
 $\Delta = 21^\circ 36' 57''$  (LT)  
 $D = 9^\circ 32' 57''$   
 $R = 600.00'$   
 $T = 114.54'$   
 $L = 226.36'$   
 $E = 10.84'$   
 $e = 4.00\%$  (30 MPH)  
 $T.R. = 63'$   
 $S.E. RUN = 28'$   
 $P.C. STA. = 45+85.13$   
 $P.T. STA. = 48+11.49$

PLAN	SURVEYED	DATE
	PLOTTED	
	ALIGNED	
	CHECKED	
	FILED	
	NO.	

PROFILE	SURVEYED	DATE
	PLOTTED	
	GRADES	
	CHECKED	
	STRUCTURE	
	NOTATIONS	
	CHKD	
	NO.	



NW 1/4 SEC 22  
 T-10-N, R-4-W  
 RICHARD L. & JANE A. SPEER



FILE NAME =	USER NAME = zech1	DESIGNED - DBS	REVISED -	<b>STATE OF ILLINOIS DEPARTMENT OF TRANSPORTATION</b>	<b>ROADWAY PLAN AND PROFILE TR 178 (1800E)</b>	F.A.P. RTE. 313	SECTION 7-2 ; 6-1	COUNTY HENDERSON	TOTAL SHEETS 976	SHEET NO. 186	
D468409-SHT-52-PLNPRF-TR178-01.dgn	PLOT SCALE = 100.0000' / 1" =	CHECKED - CSB	REVISED -			SCALE: 1" = 50'	SHEET NO. 52 OF 67 SHEETS	STA. 38+00 TO STA. 47+00	CONTRACT NO. 68409		
	PLOT DATE = 10/16/2012	DATE = 10/2012	REVISED -			ILLINOIS FED. AID PROJECT					