
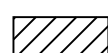





-  GRADING, DRAINAGE STRUCTURES AND PAVEMENT
-  GRADING AND DRAINAGE STRUCTURES
-  PAVING OF PREVIOUSLY GRADED SECTION
-  TEMPORARY CROSSOVER
-  REMOVAL OF TEMPORARY PAVEMENT

MAINTENANCE OF TRAFFIC STAGE 3B

SEQUENCE OF CONSTRUCTION - STAGE 3B

1. REMOVE DETOUR No. 2, COMPLETE EMBANKMENT FOR PROPOSED US 34 FROM STA 781+00± TO STA 802+00.
2. PAVE FINAL SURFACE UNDER TRAFFIC ON US 34 FROM STA 794+00 WB AND 813+50 EB TO STA 825+00.
3. PLACE EMBANKMENT AND PAVE EAST CUL-DE-SAC ON EXISTING US 34.

TRAFFIC PLACEMENT - STAGE 3B

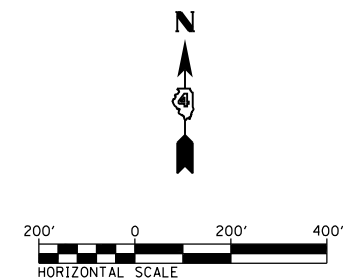
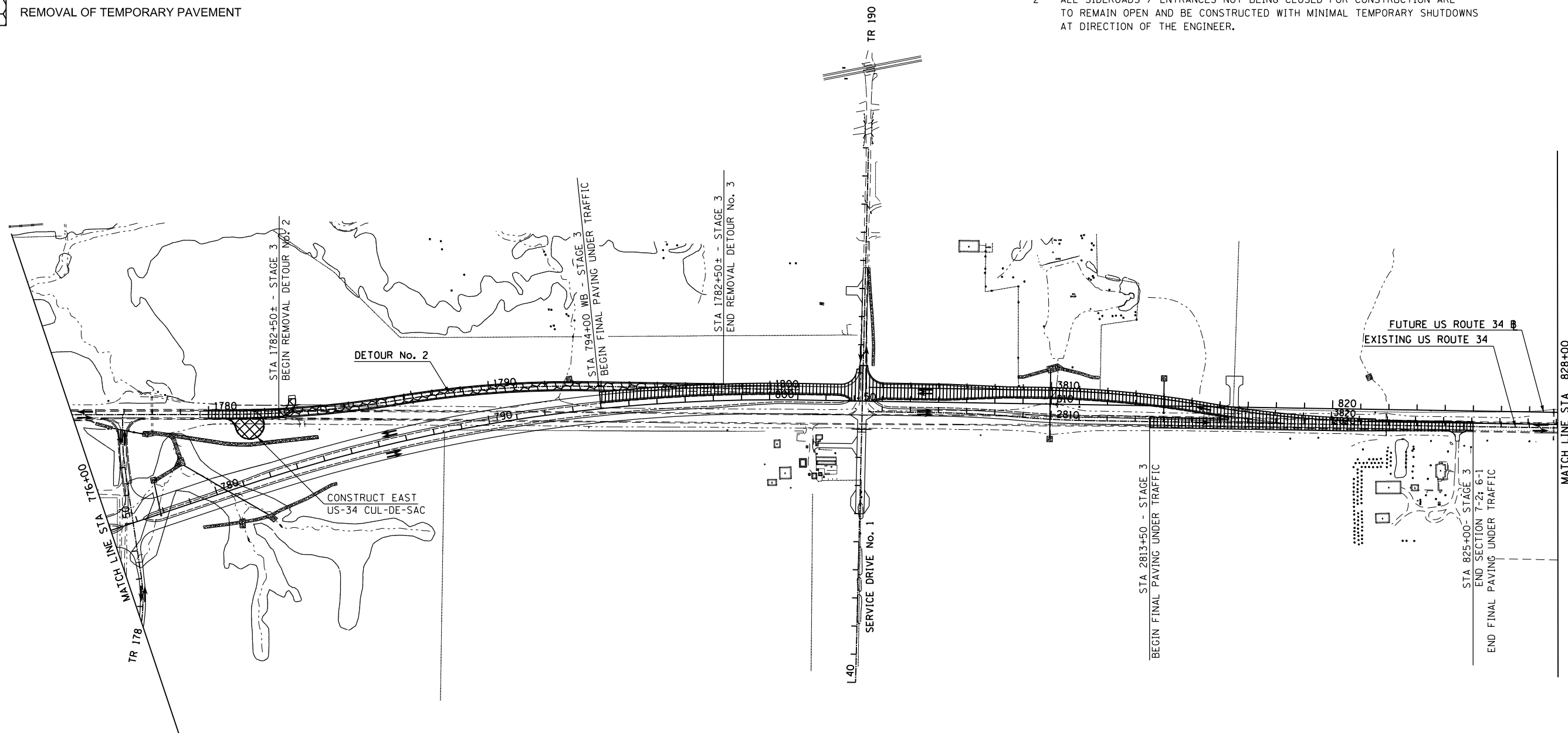
1. STAGE 3A (SHIFT DETOUR No. 3 TRAFFIC TO RECONSTRUCT IL 94 / 116) MUST BE COMPLETE PRIOR TO STAGE 3B.
2. SHIFT DETOUR No. 1 TRAFFIC TO FUTURE US 34 SIMULTANEOUSLY WITH TRAFFIC SHIFT OF DETOUR No. 2.

TRAFFIC CONTROL STANDARDS

701001 701006 701011 701326

NOTES:

1. PLACE FINISH SURFACE UNDER TRAFFIC USING STANDARD 701400 & 701406.
2. ALL SIDEROADS / ENTRANCES NOT BEING CLOSED FOR CONSTRUCTION ARE TO REMAIN OPEN AND BE CONSTRUCTED WITH MINIMAL TEMPORARY SHUTDOWNS AT DIRECTION OF THE ENGINEER.



FILE NAME = D468409-SHT-STAGING_3-17.dgn	USER NAME = zach1	DESIGNED - DBS	REVISED -
		DRAWN - PSBA	REVISED -
	PLOT SCALE = 400.0000' / in.	CHECKED - CSB	REVISED -
	PLOT DATE = 10/16/2012	DATE - 10/2012	REVISED -

**STATE OF ILLINOIS
DEPARTMENT OF TRANSPORTATION**

**CONSTRUCTION STAGING PLANS
STAGE 3A & 3B - US ROUTE 34**

SCALE: 1" = 200' SHEET NO. 17 OF 17 SHEETS STA. 800+00 TO STA. 850+00

F.A.P. RTE.	SECTION	COUNTY	TOTAL SHEETS	SHEET NO.
313	7-2; 6-1	HENDERSON	976	240
CONTRACT NO. 68409				
ILLINOIS FED. AID PROJECT				