

SW 1/4, SECTION 14, T10N, R5W, 4TH P.M.

4BDB044+TE
LILLIAN JUNE GALBRAITH a/k/a JUNE L. GALBRAITH

SE 1/4, SECTION 14, T10N, R5W, 4TH P.M.

4BDB001+TE
DONALD E. HOLFORD AND MILDRED HOLFORD
HUSBAND AND WIFE, AS JOINT TENANTS

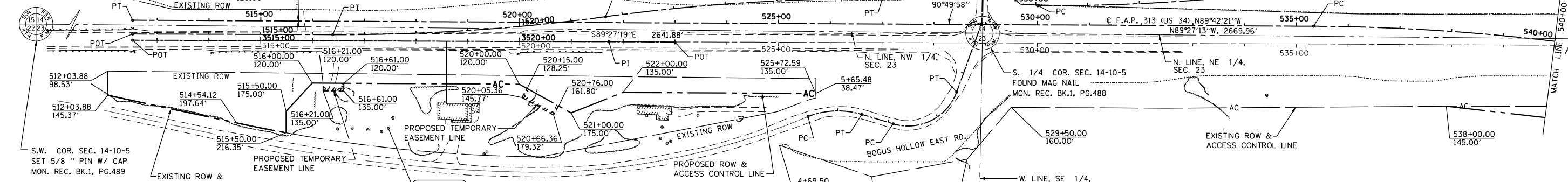
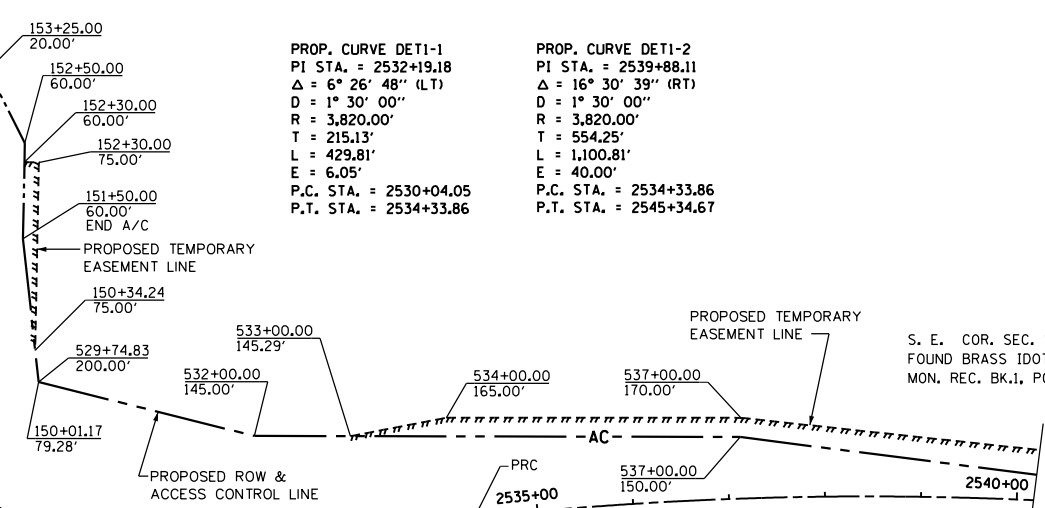
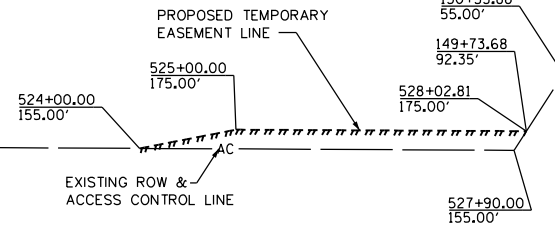
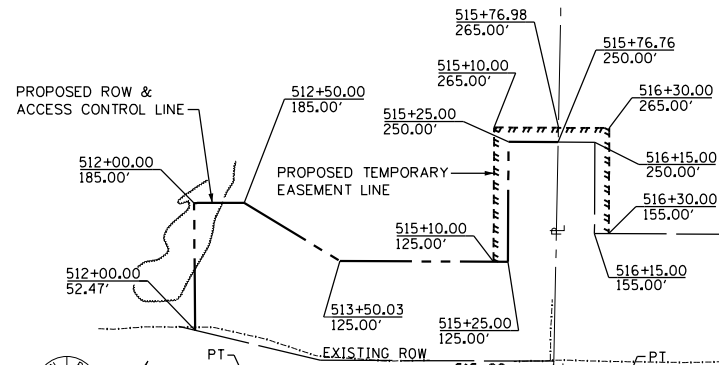
PROP. CURVE WT-WB-1
PI STA. = 1519+03.97
Δ = 7° 55' 44" (LT)
D = 1° 30' 00"
R = 3,820.00'
T = 264.74'
L = 528.63'
E = 9.16'
P.C. STA. = 1516+39.24
P.T. STA. = 1521+67.87

PROP. CURVE WT-WB-2
PI STA. = 1524+36.13
Δ = 8° 02' 02" (RT)
D = 1° 30' 00"
R = 3,820.00'
T = 268.26'
L = 535.64'
E = 9.41'
P.C. STA. = 1521+67.87
P.T. STA. = 1527+03.51

PROP. CURVE DETI-1
PI STA. = 2532+19.18
Δ = 6° 26' 48" (LT)
D = 1° 30' 00"
R = 3,820.00'
T = 215.13'
L = 429.81'
E = 6.05'
P.C. STA. = 2530+04.05
P.T. STA. = 2534+33.86

PROP. CURVE DETI-2
PI STA. = 2539+88.11
Δ = 16° 30' 39" (RT)
D = 1° 30' 00"
R = 3,820.00'
T = 554.25'
L = 1,100.81'
E = 40.00'
P.C. STA. = 2534+33.86
P.T. STA. = 2545+34.67

4BDB045+TE
HELEN DENISE JONES, A SINGLE PERSON



PROP. CURVE US34-7
PI STA. = 505+10.93
Δ = 20° 06' 53" (RT)
D = 1° 20' 31"
R = 4,270.00'
T = 757.32'
L = 1,499.05'
E = 66.64'
P.C. STA. = 497+53.61
P.T. STA. = 512+52.66

4BDB046+TE
MICHAEL J. MCGRAW AND DONNA LEE MCGRAW,
HUSBAND AND WIFE, IN JOINT TENANCY

PROP. CURVE BHE-1
PI STA. = 5+96.00
Δ = 37° 51' 33" (RT)
D = 35° 48' 36"
R = 160.00'
T = 54.87'
L = 105.72'
E = 9.15'
P.C. STA. = 5+41.13
P.T. STA. = 6+46.85

PROP. CURVE BHE-2
PI STA. = 8+04.48
Δ = 86° 41' 48" (LT)
D = 57° 17' 45"
R = 100.00'
T = 94.39'
L = 151.31'
E = 37.51'
P.C. STA. = 7+10.08
P.T. STA. = 8+61.40

PROP. CURVE US34-8
PI STA. = 542+92.54
Δ = 21° 06' 55" (RT)
D = 1° 24' 22"
R = 4,075.01'
T = 759.50'
L = 1,501.77'
E = 70.17'
P.C. STA. = 535+33.04
P.T. STA. = 550+34.81

4BDB003+TE
M. JANE WEIR ALSO KNOWN AS JANE WEIR

NE 1/4, SECTION 23, T10N, R5W, 4TH P.M.

Sta 148+00.00 (TR 111, 1350E)=
Sta 528+92.63 (US 34)

FILE NAME D468409-ROW_SH01.dgn	USER NAME = zach1	DESIGNED - KEF	REVISED -	STATE OF ILLINOIS DEPARTMENT OF TRANSPORTATION	RIGHT OF WAY PLANS		F.A.P. RTE. = 313	SECTION = 7-2; 6-1	COUNTY = HENDERSON	TOTAL SHEETS = 976	SHEET NO. = 354
	PLOT SCALE = 200.0000' / in.	CHECKED - CSB	REVISED -		PROJECT = SHEET NO. 1 OF 14 SHEETS	JOB NO. = R-94-013-10	CONTRACT NO. 68409		FED. ROAD DIST. NO. ILLINOIS FED. AID PROJECT		
PLOT DATE = 10/16/2012	DATE = 10/2012	REVISED -	REVISED -	SCALE: 1" = 100'	STA. 512+00.00 TO STA. 540+00.00						