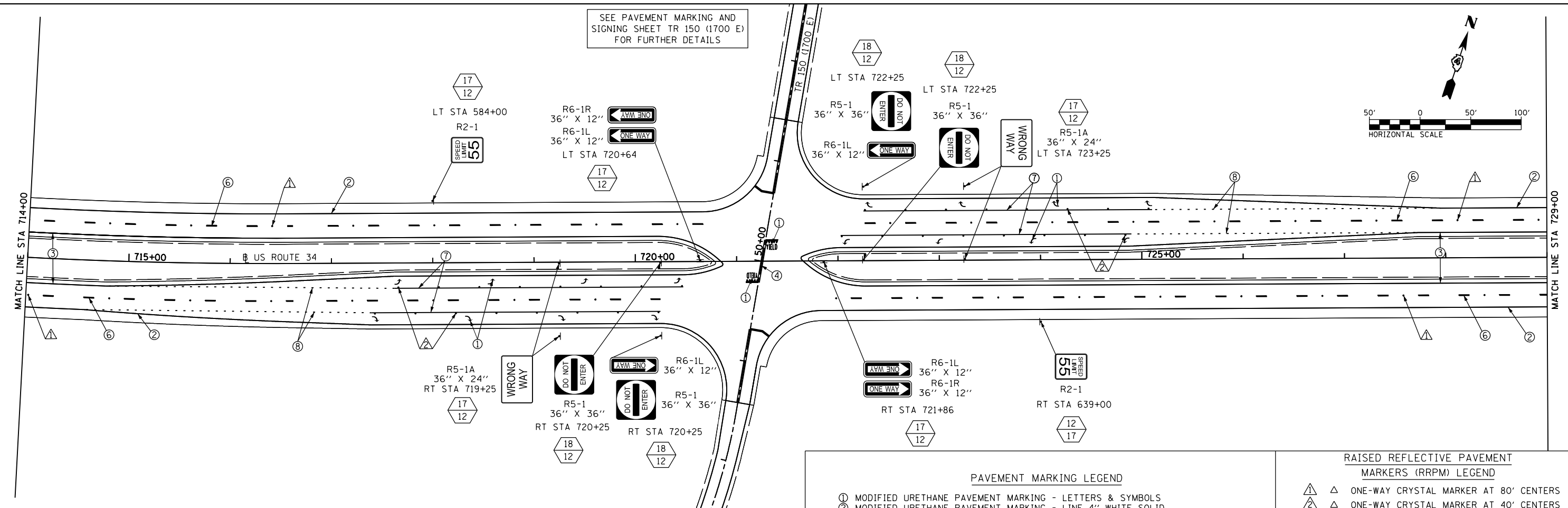
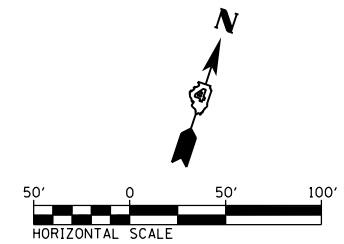


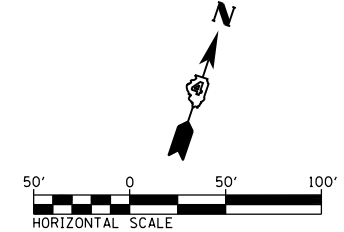
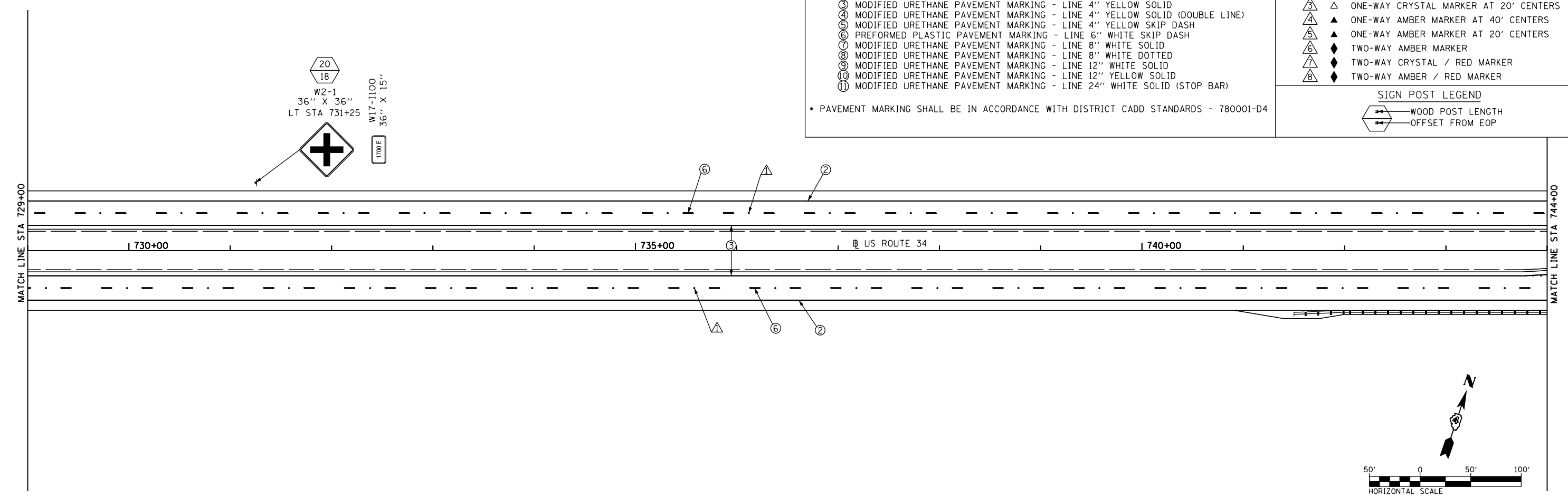
SEE PAVEMENT MARKING AND SIGNING SHEET TR 150 (1700 E) FOR FURTHER DETAILS



- PAVEMENT MARKING LEGEND**
- ① MODIFIED URETHANE PAVEMENT MARKING - LETTERS & SYMBOLS
 - ② MODIFIED URETHANE PAVEMENT MARKING - LINE 4" WHITE SOLID
 - ③ MODIFIED URETHANE PAVEMENT MARKING - LINE 4" YELLOW SOLID
 - ④ MODIFIED URETHANE PAVEMENT MARKING - LINE 4" YELLOW SOLID (DOUBLE LINE)
 - ⑤ MODIFIED URETHANE PAVEMENT MARKING - LINE 4" YELLOW SKIP DASH
 - ⑥ PREFORMED PLASTIC PAVEMENT MARKING - LINE 6" WHITE SKIP DASH
 - ⑦ MODIFIED URETHANE PAVEMENT MARKING - LINE 8" WHITE SOLID
 - ⑧ MODIFIED URETHANE PAVEMENT MARKING - LINE 8" WHITE DOTTED
 - ⑨ MODIFIED URETHANE PAVEMENT MARKING - LINE 12" WHITE SOLID
 - ⑩ MODIFIED URETHANE PAVEMENT MARKING - LINE 12" YELLOW SOLID
 - ⑪ MODIFIED URETHANE PAVEMENT MARKING - LINE 24" WHITE SOLID (STOP BAR)
- PAVEMENT MARKING SHALL BE IN ACCORDANCE WITH DISTRICT CADD STANDARDS - 780001-D4

- RAISED REFLECTIVE PAVEMENT MARKERS (RRPM) LEGEND**
- △ ONE-WAY CRYSTAL MARKER AT 80' CENTERS
 - △ ONE-WAY CRYSTAL MARKER AT 40' CENTERS
 - △ ONE-WAY CRYSTAL MARKER AT 20' CENTERS
 - ▲ ONE-WAY AMBER MARKER AT 40' CENTERS
 - ▲ ONE-WAY AMBER MARKER AT 20' CENTERS
 - ◆ TWO-WAY AMBER MARKER
 - ◆ TWO-WAY CRYSTAL / RED MARKER
 - ◆ TWO-WAY AMBER / RED MARKER

- SIGN POST LEGEND**
- WOOD POST LENGTH
 - OFFSET FROM EOP



FILE NAME = D468409-SHT-08-PMK-US34.dgn

USER NAME = zachl	DESIGNED - DBS	REVISED -
DRAWN - PSBA	REVISIONS -	
CHECKED - CSB	REVISIONS -	
DATE - 10/2012	REVISIONS -	

**STATE OF ILLINOIS
DEPARTMENT OF TRANSPORTATION**

**PAVEMENT MARKING & SIGNING
US ROUTE 34**

SCALE: 1" = 50' SHEET NO. 8 OF 24 SHEETS STA. 714+00 TO STA. 744+00

F.A.P. RTE.	SECTION	COUNTY	TOTAL SHEETS	SHEET NO.
313	7-2 ; 6-1	HENDERSON	976	396
CONTRACT NO. 68409				
ILLINOIS FED. AID PROJECT				