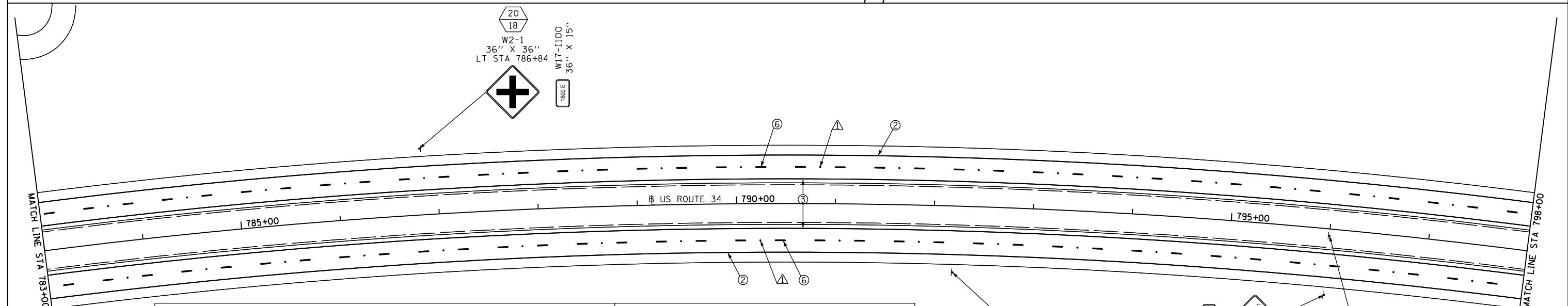
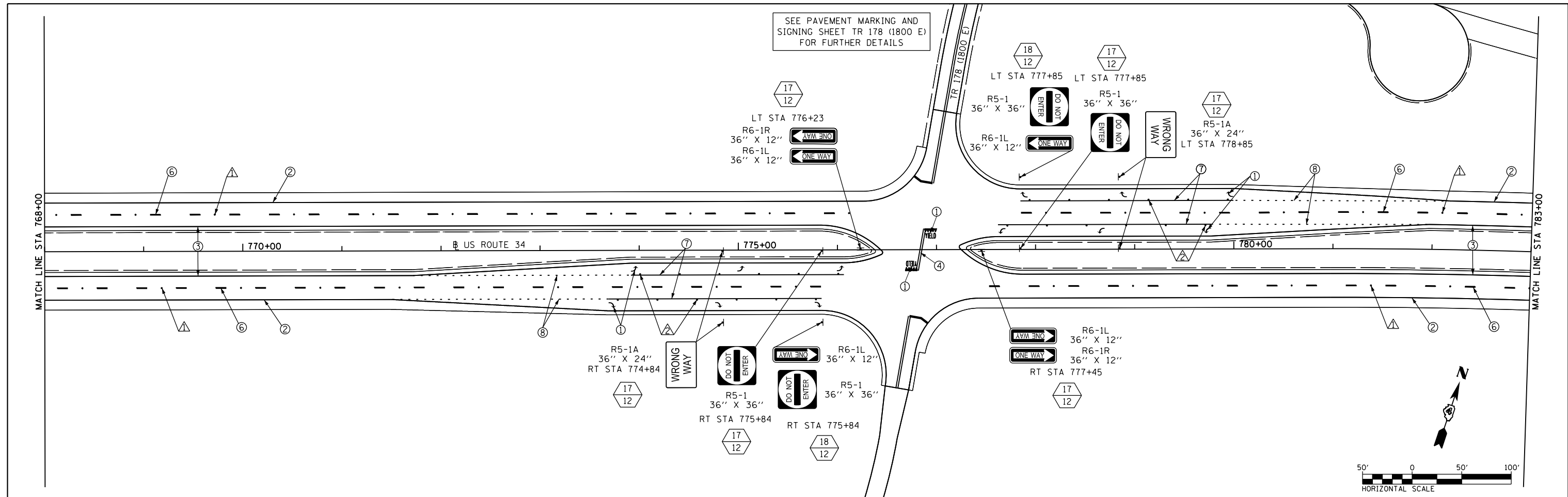


SEE PAVEMENT MARKING AND SIGNING SHEET TR 178 (1800 E) FOR FURTHER DETAILS



**PAVEMENT MARKING LEGEND**

- ① MODIFIED URETHANE PAVEMENT MARKING - LETTERS & SYMBOLS
- ② MODIFIED URETHANE PAVEMENT MARKING - LINE 4" WHITE SOLID
- ③ MODIFIED URETHANE PAVEMENT MARKING - LINE 4" YELLOW SOLID
- ④ MODIFIED URETHANE PAVEMENT MARKING - LINE 4" YELLOW SOLID (DOUBLE LINE)
- ⑤ MODIFIED URETHANE PAVEMENT MARKING - LINE 4" YELLOW SKIP DASH
- ⑥ PREFORMED PLASTIC PAVEMENT MARKING - LINE 6" WHITE SKIP DASH
- ⑦ MODIFIED URETHANE PAVEMENT MARKING - LINE 8" WHITE SOLID
- ⑧ MODIFIED URETHANE PAVEMENT MARKING - LINE 8" WHITE DOTTED
- ⑨ MODIFIED URETHANE PAVEMENT MARKING - LINE 12" WHITE SOLID
- ⑩ MODIFIED URETHANE PAVEMENT MARKING - LINE 12" YELLOW SOLID
- ⑪ MODIFIED URETHANE PAVEMENT MARKING - LINE 24" WHITE SOLID (STOP BAR)

• PAVEMENT MARKING SHALL BE IN ACCORDANCE WITH DISTRICT CADD STANDARDS - 780001-D4

**RAISED REFLECTIVE PAVEMENT MARKERS (RRPM) LEGEND**

- △ ONE-WAY CRYSTAL MARKER AT 80' CENTERS
- △ ONE-WAY CRYSTAL MARKER AT 40' CENTERS
- △ ONE-WAY CRYSTAL MARKER AT 20' CENTERS
- ▲ ONE-WAY AMBER MARKER AT 40' CENTERS
- ▲ ONE-WAY AMBER MARKER AT 20' CENTERS
- ◆ TWO-WAY AMBER MARKER
- ◆ TWO-WAY CRYSTAL / RED MARKER
- ◆ TWO-WAY AMBER / RED MARKER

**SIGN POST LEGEND**

- WOOD POST LENGTH
- OFFSET FROM EOP

FILE NAME = D468409-SHT-10-PMK-US34.dgn

USER NAME = zachl	DESIGNED - DBS	REVISED -
PLOT SCALE = 100.0000' / 1" =	DRAWN - PSBA	REVISED -
PLOT DATE = 10/16/2012	CHECKED - CSB	REVISED -
	DATE - 10/2012	REVISED -

**STATE OF ILLINOIS  
DEPARTMENT OF TRANSPORTATION**

**PAVEMENT MARKING & SIGNING  
US ROUTE 34**

SCALE: 1" = 50' SHEET NO. 10 OF 24 SHEETS STA. 768+00 TO STA. 798+00

F.A.P. RTE. 313	SECTION 7-2 ; 6-1	COUNTY HENDERSON	TOTAL SHEETS 976	SHEET NO. 398
CONTRACT NO. 68409				
ILLINOIS FED. AID PROJECT				