

END OF GIRDER DETAIL
(Showing required hole locations)

***TOP OF WEB ELEVATIONS**

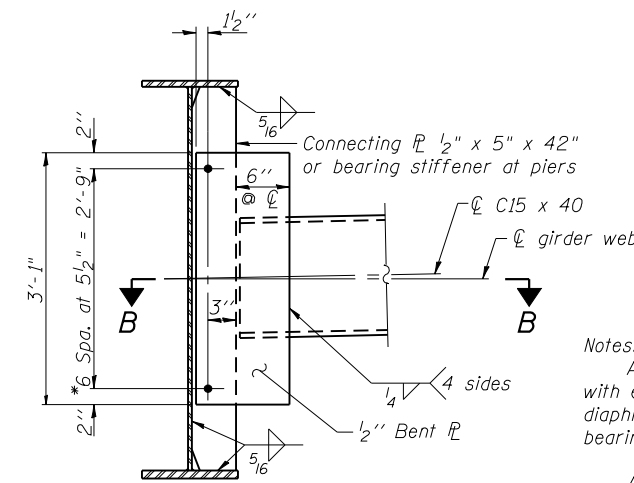
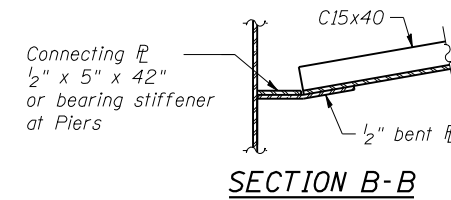
Location	Girder 1	Girder 2	Girder 3	Girder 4	Girder 5	Girder 6
⊕ Brg. W. Abut.	655.57	655.72	655.84	655.91	655.81	655.68
⊕ Splice 1	655.87	656.03	656.15	656.22	656.11	655.99
⊕ Pier 1	655.89	656.04	655.17	656.23	656.13	656.00
⊕ Splice 2	655.98	656.13	656.26	656.33	656.22	656.09
⊕ Pier 2	656.31	656.46	656.58	656.65	656.55	656.42
⊕ Splice 3	656.65	656.81	656.93	657.00	656.89	656.77
⊕ Brg. E. Abut.	657.08	657.24	657.36	657.43	657.32	657.20

*Elevations are for fabrication only

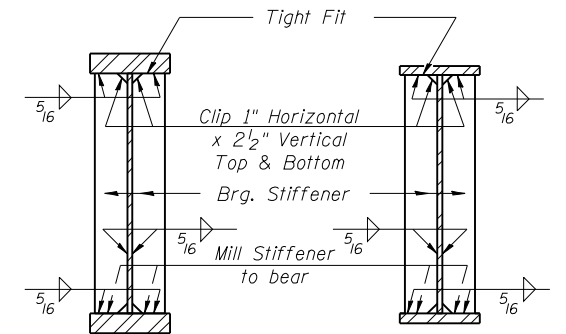
***TOP OF WEB ELEVATIONS**

Location	Girder 7	Girder 8	Girder 9	Girder 10	Girder 11	Girder 12
⊕ Brg. W. Abut.	655.71	655.83	655.94	655.87	655.75	655.59
⊕ Splice 1	656.01	656.14	656.24	656.18	656.05	655.90
⊕ Pier 1	656.03	656.16	656.26	656.19	656.07	655.92
⊕ Splice 2	656.12	656.25	656.35	656.28	656.16	656.01
⊕ Pier 2	656.45	656.57	656.68	656.61	656.49	656.33
⊕ Splice 3	656.79	656.92	657.02	656.96	656.83	656.68
⊕ Brg. E. Abut.	657.22	657.35	657.46	657.39	657.26	657.11

*Elevations are for fabrication only

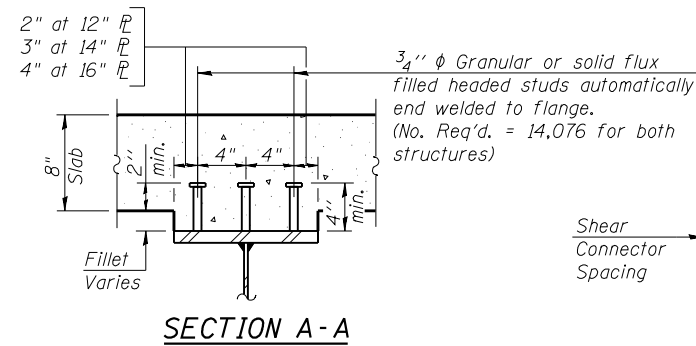


DIAPHRAGM 'D'
(150 req'd)

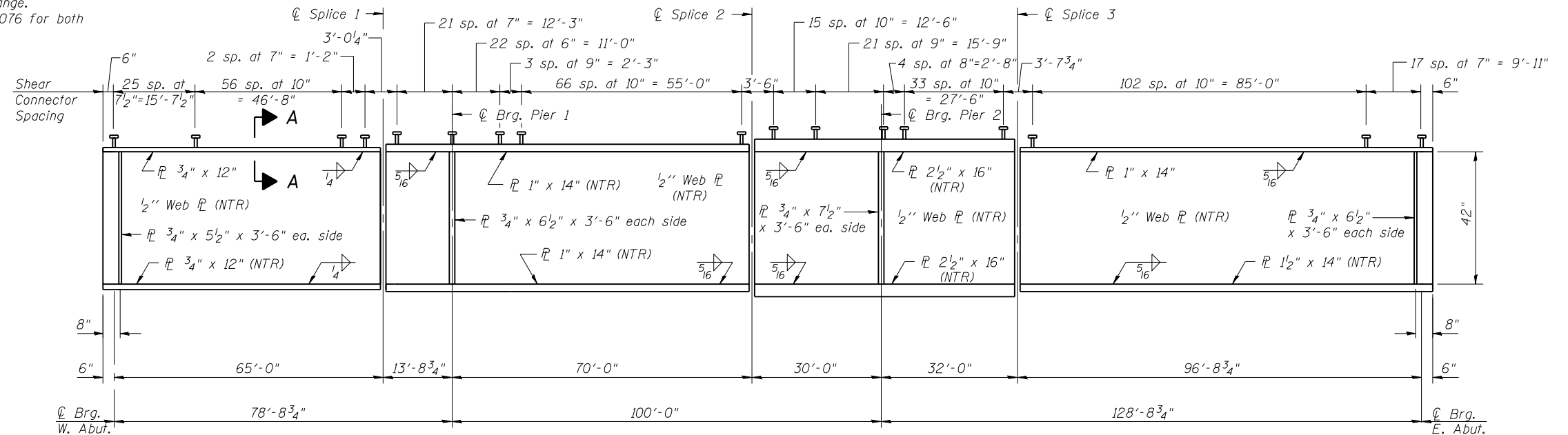


SECTION AT PIER **SECTION AT ABUTMENT**

Notes:
All diaphragms shall be installed as steel is erected and secured with erection pins and bolts except as otherwise noted. Individual diaphragms at supports may be temporarily disconnected to install bearing anchor rods.
Two hardened washers required for each set of oversized holes. Alternate channels C15x50 are permitted to facilitate material acquisition. Calculated weight of Structural Steel is based on C15x40 Sections. The alternate, if utilized, shall be provided at no extra cost to the Department.
*3/4" φ HS bolts, 15/16" φ holes



SECTION A-A



GIRDER ELEVATION

Plates designated "NTR" shall conform to the Impact Testing Requirement, Zone 2.
All structural steel shall be AASHTO M270, Grade 50W.

FILE NAME = 0363-78134-027-struct.st.dwg
CB PROJECT NO. 04065

G-1

7-1-10

Coombe-Bloxdorf P.C.
- CIVIL ENGINEERS -
- STRUCTURAL ENGINEERS -
- LAND SURVEYORS -
Design Firm License No. 184-002703

USER NAME = .MML.
PLOT SCALE = 0/2" = 1' / IN.
PLOT DATE = 10/16/2012

DESIGNED - CME
CHECKED - MCB
DRAWN - MML
CHECKED - MCB

REVISED -
REVISED -
REVISED -
REVISED -

STATE OF ILLINOIS
DEPARTMENT OF TRANSPORTATION

STRUCTURAL STEEL
STRUCTURE NO. 036-0062 (E.B.) & 036-0063 (W.B.)

SHEET NO. 27 OF 45 SHEETS

F.A.P. RTE.	SECTION	COUNTY	TOTAL SHEETS	SHEET NO.
313	7-2, 6-1	HENDERSON	976	480
CONTRACT NO. 68409				

ILLINOIS FED. AID PROJECT