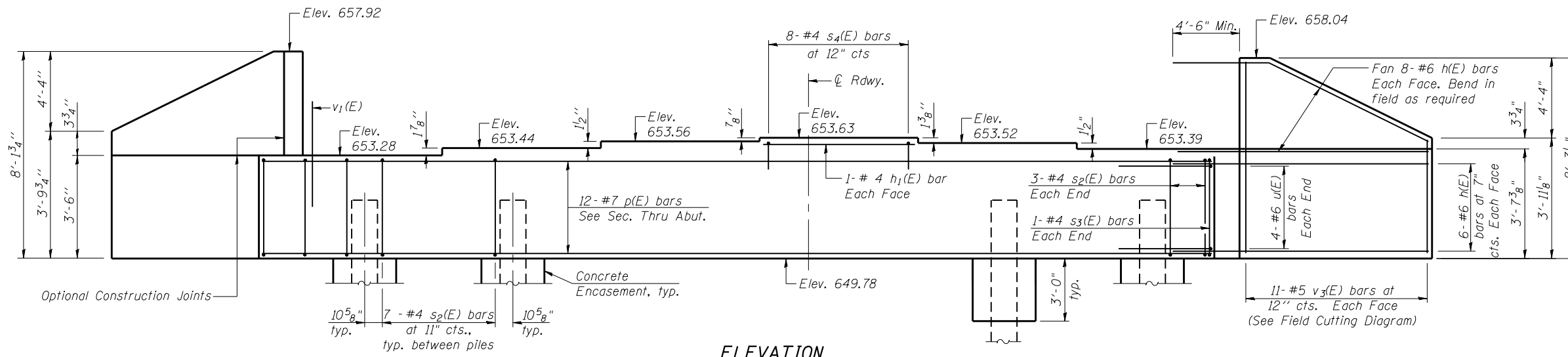
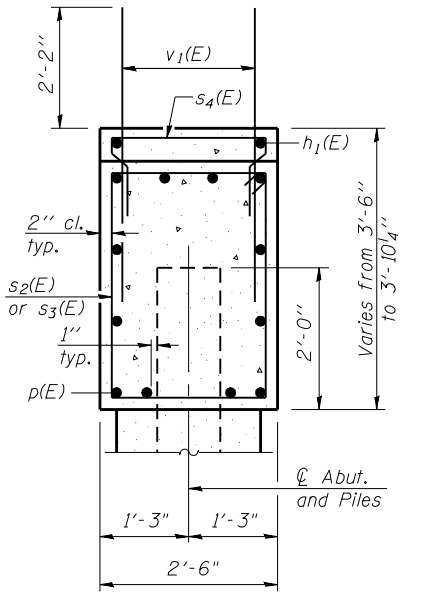


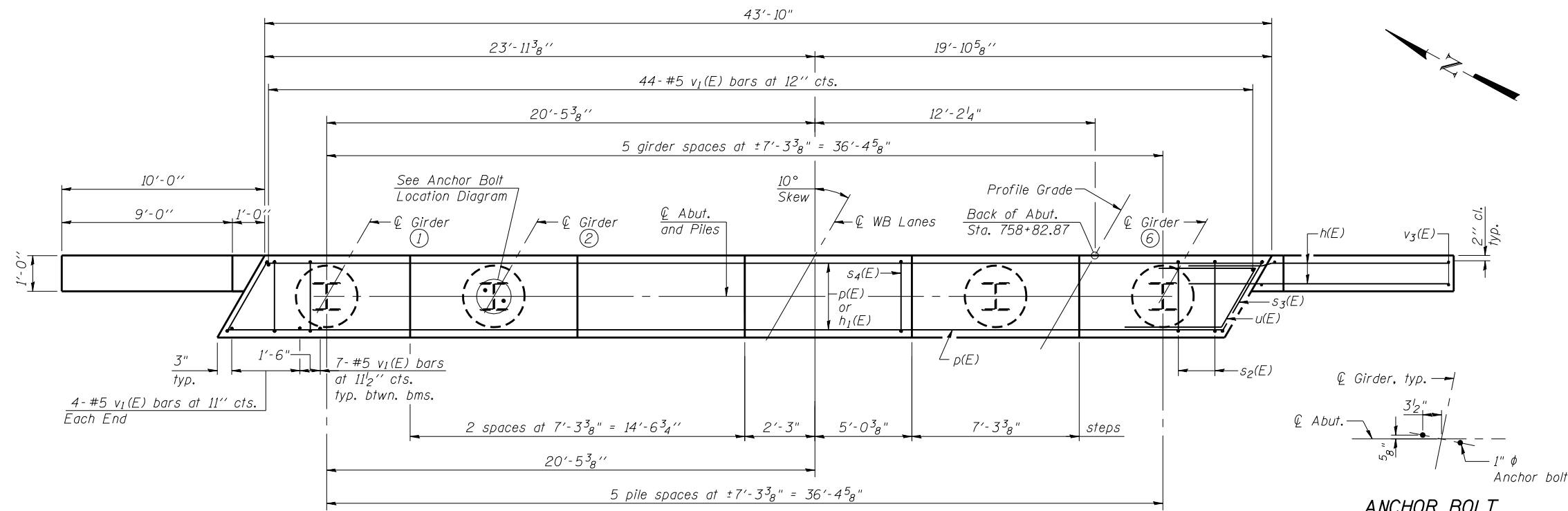
Notes:
Pour steps monolithically with cap.



ELEVATION



SEC. THRU ABUT.



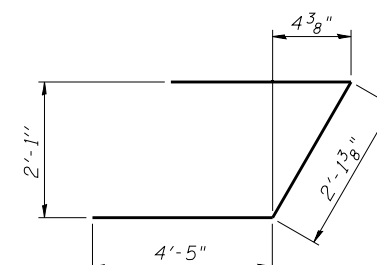
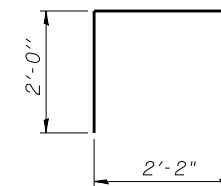
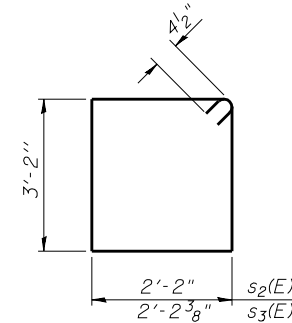
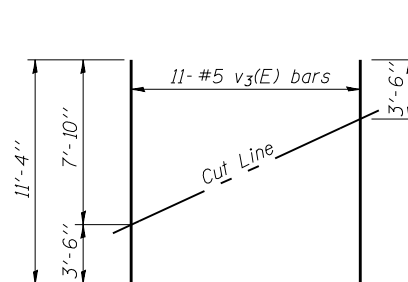
PLAN

ANCHOR BOLT LOCATION DIAGRAM

PILE DATA

Type: HP 14x73 with pile shoes
Nominal Required Bearing: 578K
Factored Resistance Available: 318K
Est. Length: 40'
No. Production Piles: 5
No. Test Piles: 1

Note:
Piles shall be driven thru 24" φ precored holes extending to elevation 638.0 according to Article 512.09c of the Standard Specifications. Cost included in driving piles.



BILL OF MATERIAL

Bar	No.	Size	Length	Shape
h(E)	56	#6	14'-4"	—
h1(E)	2	#4	7'-0"	—
p(E)	12	#7	43'-6"	—
s2(E)	41	#4	11'-5"	□
s3(E)	2	#4	11'-6"	□
s4(E)	8	#4	6'-2"	□
u(E)	8	#6	11'-0"	⌋
v1(E)	87	#5	4'-4"	—
v3(E)	22	#5	11'-4"	—
Structure Excavation		Cu. Yd.	107	
Concrete Structures		Cu. Yd.	19.6	
Reinforcement Bars, Epoxy Coated		Pound	3430	
Furnishing Steel Piles HP 14x73		Foot	200	
Driving Piles		Foot	200	
Test Pile HP14x73		Each	1	
Concrete Encasement		Cu. Yd.	3.3	
Pile Shoes		Each	6	

For details of piles and Concrete Encasement, see sheet 38 of 45.

FILE NAME = 0063-0063-78134-031-E-abut.WB.dgn
CB PROJECT NO. 04065

Coombe-Bloxdorf P.C.
CIVIL ENGINEERS-
STRUCTURAL ENGINEERS-
LAND SURVEYORS
Design Firm License No. 184-002703

USER NAME = .MML.
DESIGNED - CME
CHECKED - MCB
DRAWN - MML
CHECKED - MCB
PLOT SCALE = 0/2" = 1' / IN.
PLOT DATE = 10/16/2012

DESIGNED - CME
CHECKED - MCB
DRAWN - MML
CHECKED - MCB
REVISOR -
REVISOR -
REVISOR -
REVISOR -

STATE OF ILLINOIS
DEPARTMENT OF TRANSPORTATION

EAST ABUTMENT
STRUCTURE NO. 036-0063 (W.B.)

SHEET NO. 31 OF 45 SHEETS

F.A.P. RTE.	SECTION	COUNTY	TOTAL SHEETS	SHEET NO.
313	7-2, 6-1	HENDERSON	976	484
CONTRACT NO. 68409				
ILLINOIS FED. AID PROJECT				