

Benchmark: Chisled  $\square$  top @ 3'x3' Box Culvert, East Side IL 94, North Side ID07.  
Biggsville Operation Yard, Sta. 15+49.44, 23.04' Lt. (IL 94 - 1500 E), Elev. 713.53

No Existing Structure

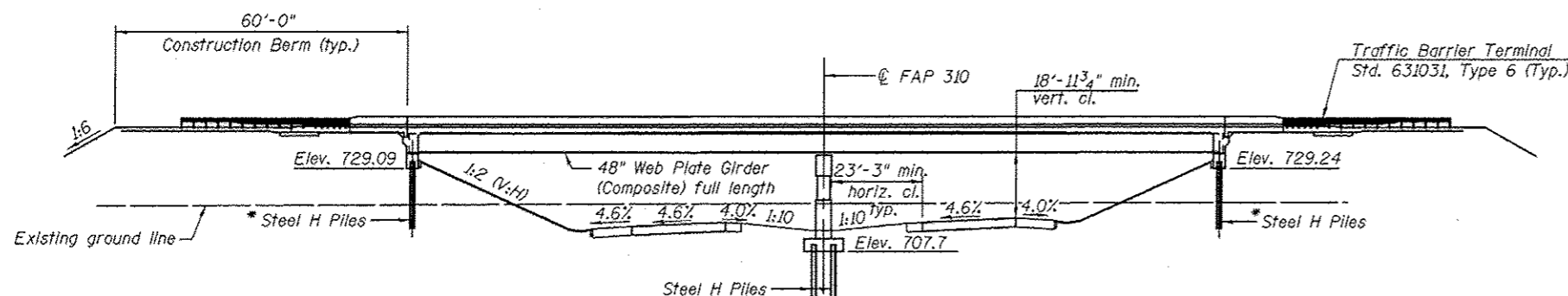
The roadway will be closed and traffic will be detoured during construction.

**LOADING HL-93**  
Allow 50#/sq. ft. for future wearing surface.

**SEISMIC DATA**  
Seismic Performance Zone (SPZ) = 1  
Design Spectral Acceleration at 1.0 sec. ( $S_{D1}$ ) = 0.07  
Design Spectral Acceleration at 0.2 sec. ( $S_{D5}$ ) = 0.11  
Soil Site Class = C

**DESIGN STRESSES**  
**FIELD UNITS**  
 $f'_c$  = 3,500 psi  
 $f_y$  = 60,000 psi (Reinforcement)  
 $f_y$  = 50,000 psi (M270 Grade 50)

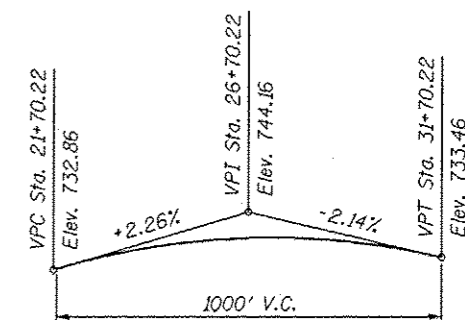
**DESIGN SPECIFICATIONS**  
2010 AASHTO LRFD Bridge Design Specifications  
5th Edition with 2010 Interims



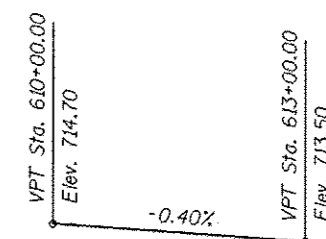
\*Precore through embankment prior to driving piles.  
See Sheets 17 & 18 of 23.

**INDEX OF SHEETS**

- 1 General Plan and Elevation
- 2 General Data
- 3-5 Top of Slab Elevations
- 6 Top of N. Approach Slab Elevations
- 7 Top of S. Approach Slab Elevations
- 8 Superstructure
- 9 Median Details
- 10 Superstructure Details
- 11 Integral Abutment Diaphragm Detail
- 14 Framing Plan
- 15 Structural Steel
- 16 Bearing Details
- 17 North Abutment
- 18 South Abutment
- 19 Pier
- 20 Steel H Piles
- 21 Bar Splicer Assembly and Mechanical Splicer Details
- 22-23 Soil Borings



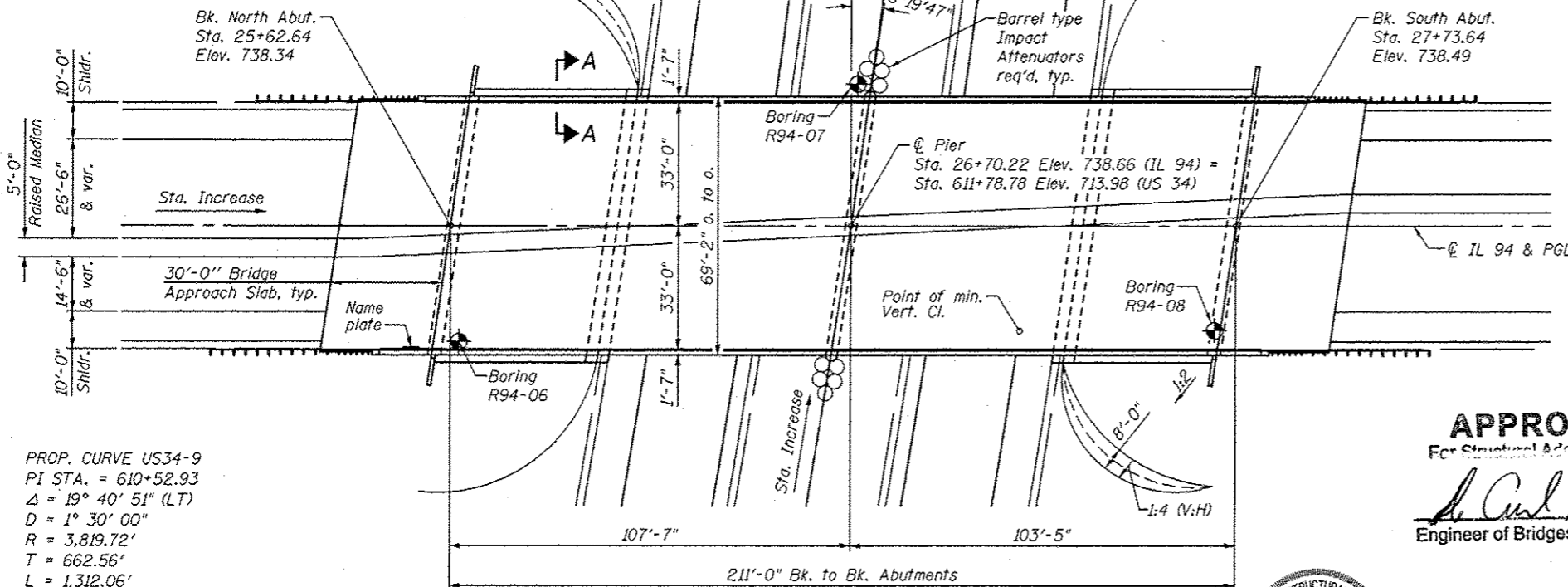
**PROPOSED PROFILE IL94**  
Along @ Roadway



**PROPOSED PROFILE US34**  
Along median edge of pavement

STATION 26+70.22  
BUILT 2011 BY  
STATE OF ILLINOIS  
F.A.P. ROUTE 534, SEC. 7-2, 6-1  
LOADING HL-93  
STRUCTURE NO. 036-0065

**NAME PLATE**  
See Std. 515001

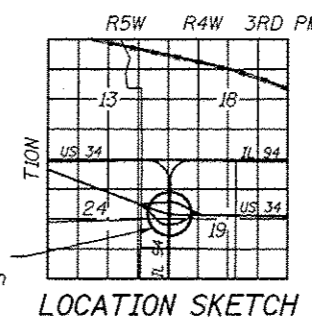


PROP. CURVE US34-9  
PI STA. = 610+52.93  
 $\Delta$  = 19° 40' 51" (LT)  
D = 1° 30' 00"  
R = 3,819.72'  
T = 662.56'  
L = 1,312.06'  
E = 57.04'  
o = \_\_\_\_\_  
T.R. = \_\_\_\_\_  
S.E. RUN = \_\_\_\_\_  
P.C. STA. = 603+90.37  
P.T. STA. = 617+02.43

**APPROVED**  
For Structural Adequacy Only  
*Mary Coombe Bloxdorf*  
Engineer of Bridges & Structures



*Mary Coombe Bloxdorf*  
ILLINOIS STRUCTURAL NO. 4859  
EXPIRES 11/30/14  
DATE: 10/16/2012



**GENERAL PLAN & ELEVATION**  
**IL RTE 94/16 OVER US RTE 34**  
**FAP 534, SECTION 7-2, 6-1**  
**HENDERSON COUNTY**  
**STATION 26+70.22**  
**STRUCTURE NO. 036-0065**

FILE NAME: \\V330065-68489-1801-98-05.dgn  
CB PROJECT NO. 04665

**Coombe-Bloxdorf P.C.**  
- CIVIL ENGINEERS -  
- STRUCTURAL ENGINEERS -  
- LAND SURVEYORS -  
Design Firm License No. 184-062703

USER NAME = MML	DESIGNED - RKM	REVISIONS -
PLOT SCALE = 42:1 1" / IN.	CHECKED - MCB	REVISIONS -
PLOT DATE = 10/16/2012	DRAWN - CFC/MML	REVISIONS -
	CHECKED - MCB	REVISIONS -

**STATE OF ILLINOIS**  
**DEPARTMENT OF TRANSPORTATION**

F.A.P. RTE.	SECTION	COUNTY	TOTAL SHEETS	SHEET NO.
534	7-2, 6-1	HENDERSON	976	499
CONTRACT NO. 68409				
ILLINOIS FED. AID PROJECT				