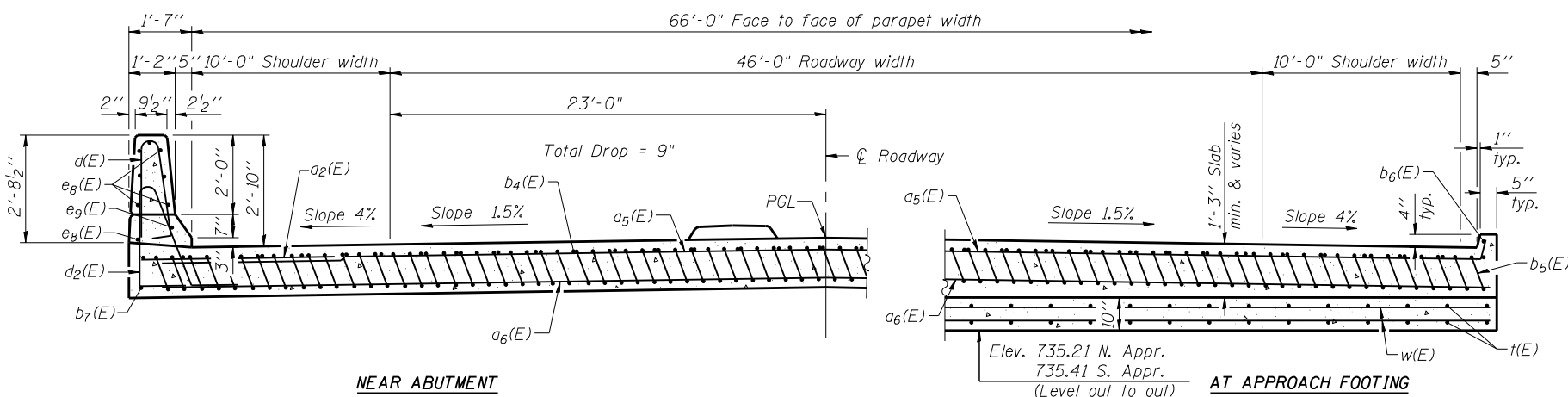
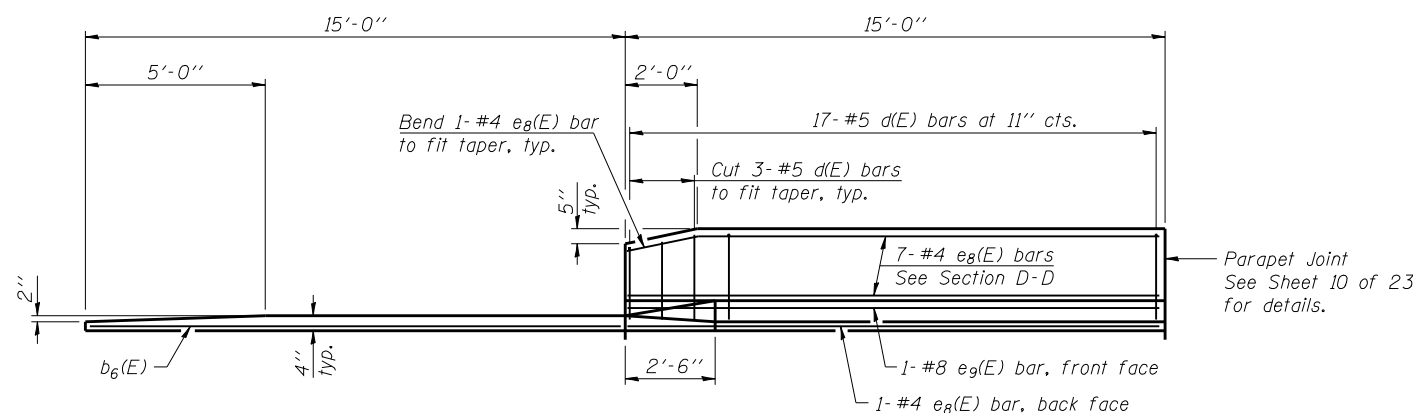


SECTION C-C



SECTION D-D

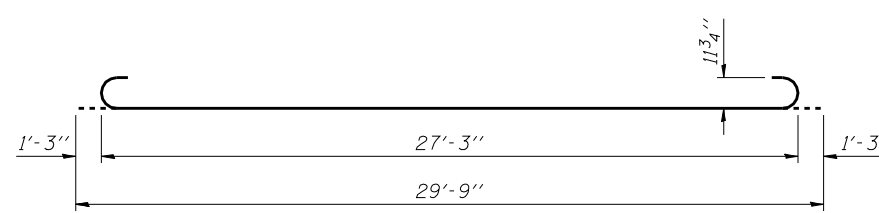
(See Plan for dimensions not shown)



VIEW E-E



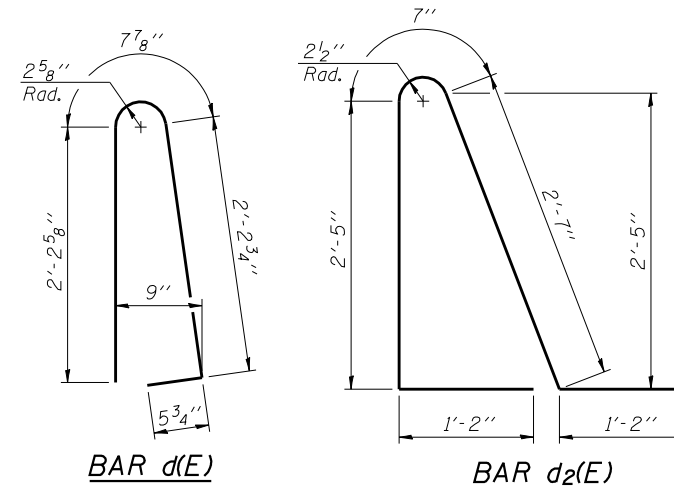
BAR a5(E)



BAR b5(E)

Notes:

See sheet 12 of 23 for Detail A and View B-B.  
 Approach slab and parapet concrete shall be paid for as Concrete Superstructure.  
 Approach footing concrete shall be paid for as Concrete Structures.  
 Reinforcement shall be paid for as Reinforcement Bars, Epoxy Coated.  
 For v(E) bar details, see sheet 10 of 23.  
 The approach footing maximum applied service bearing pressure (Qmax) = 2.0 ksf.  
 For bar splicer details, see sheet 21 of 23.  
 Cost of excavation for approach footing included with Concrete Structures.  
 For Porous Granular Backfill and drainage treatment details, see sheet 2 of 23.  
 For additional parapet details, see sheet 10 of 23.  
 See sheet 9 of 23 for Median Details.



BAR d(E)

BAR d2(E)

\* Tilt #9 b5(E) bars as required to maintain clearance.

\*\*\* Cost included with Concrete Superstructure.

TWO APPROACHES  
 BILL OF MATERIAL

Bar	No.	Size	Length	Shape
a2(E)	48	#6	6'-6"	—
a5(E)	100	#4	35'-8"	—
a6(E)	276	#5	24'-11"	—
b4(E)	110	#4	29'-8"	—
b5(E)	322	#9	29'-9"	—
b6(E)	4	#4	14'-6"	—
b7(E)	4	#4	14'-8"	—
b8(E)	10	#5	29'-8"	—
c(E)	62	#5	4'-6"	—
c1(E)	124	#5	1'-2"	—
d(E)	68	#5	5'-7"	—
d2(E)	68	#5	7'-11"	—
e8(E)	32	#4	14'-8"	—
e9(E)	4	#8	14'-8"	—
t(E)	272	#4	9'-9"	—
w(E)	240	#5	24'-6"	—
Concrete Superstructure			Cu. Yd.	218.6
Concrete Structures			Cu. Yd.	42.1
Reinforcement Bars, Epoxy Coated			Pound	54,930

\* 47,030 lbs superstructure  
 7,900 lbs substructure

(Sheet 2 of 2)

FILE NAME: E:\036-0065-013-Appr-Slab-Details.dwg  
 CB PROJECT NO. 04065

BA-L  
 1-27-12  
 Coombe-Bloxdorf P.C.  
 CIVIL ENGINEERS-  
 STRUCTURAL ENGINEERS-  
 LAND SURVEYORS  
 Design Firm License No. 184-002703

USER NAME = .MML.	DESIGNED - RKM	REVISED -
PLOT SCALE = 0.2" = 1' / IN.	CHECKED -	REVISED -
PLOT DATE = 10/16/2012	DRAWN - MML	REVISED -
	CHECKED - MCB	REVISED -

STATE OF ILLINOIS  
 DEPARTMENT OF TRANSPORTATION

BRIDGE APPROACH SLAB DETAILS  
 STRUCTURE NO. 036-0065

SHEET NO. 13 OF 23 SHEETS

F.A.P. RTE.	SECTION	COUNTY	TOTAL SHEETS	SHEET NO.
534	7-2, 6-1	HENDERSON	976	511
CONTRACT NO. 68409				
ILLINOIS FED. AID PROJECT				