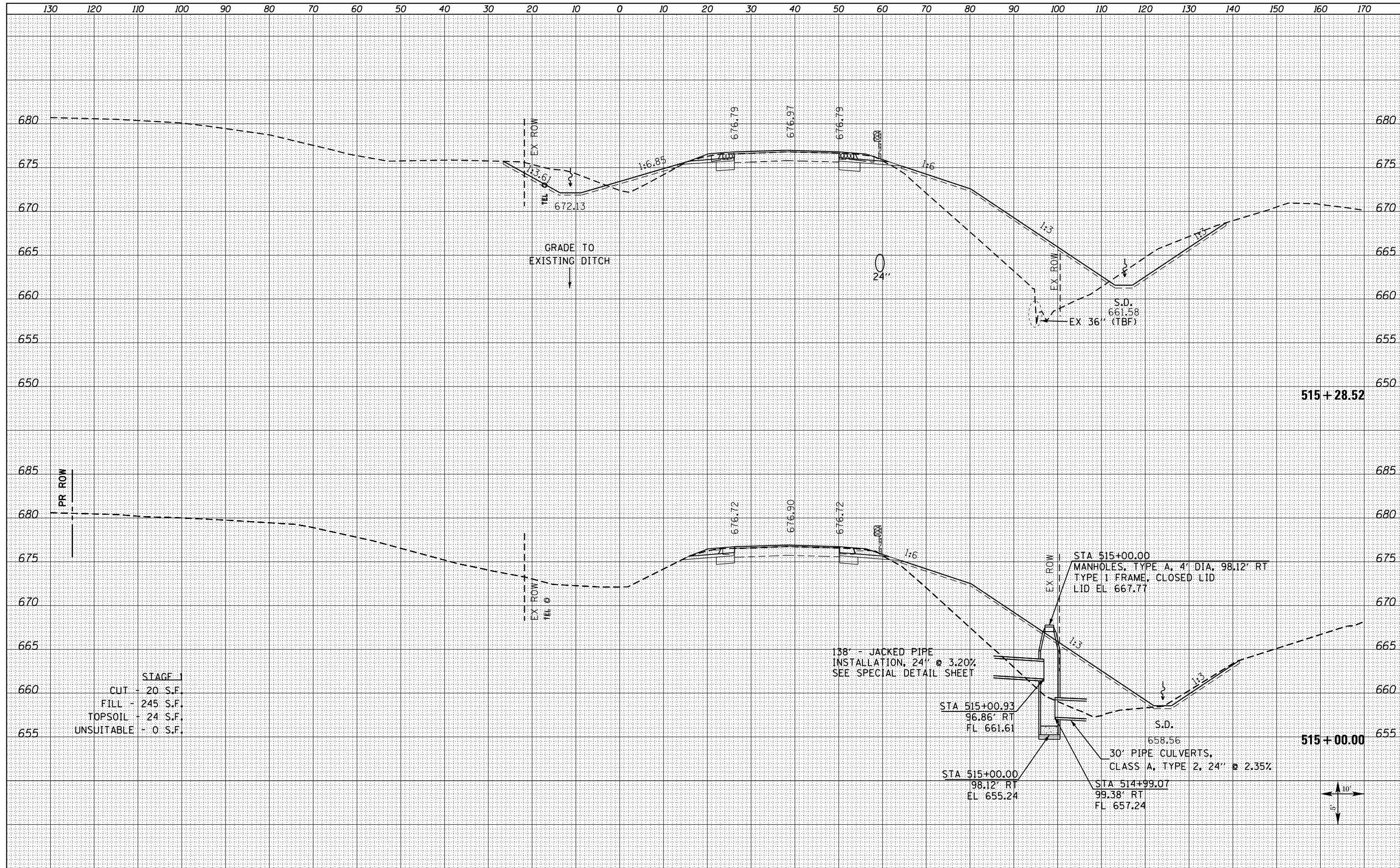


DATE	
BY	
FINAL SURVEY	SURVEYED
NOTE BOOK	PLOTTED
NO.	TEMPLATE
	AREAS CHECKED

DATE	
BY	
ORIGINAL SURVEY	SURVEYED
NOTE BOOK	PLOTTED
NO.	TEMPLATE
	AREAS CHECKED



STAGE 1
 CUT - 20 S.F.
 FILL - 245 S.F.
 TOPSOIL - 24 S.F.
 UNSUITABLE - 0 S.F.

158' - JACKED PIPE
 INSTALLATION, 24" ϕ 3.20%
 SEE SPECIAL DETAIL SHEET

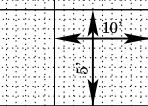
STA 515+00.00
 MANHOLES, TYPE A, 4' DIA, 98.12' RT
 TYPE 1 FRAME, CLOSED LID
 LID EL 667.77

STA 515+00.93
 96.86' RT
 FL 661.61

STA 515+00.00
 98.12' RT
 EL 655.24

30' PIPE CULVERTS,
 CLASS A, TYPE 2, 24" ϕ 2.35%

STA 514+99.07
 99.38' RT
 FL 657.24



FILE NAME =
 D468409-SHT-XSHT-US34-A.dgn

USER NAME = danw
 PLOT SCALE = 20.0000' / in.
 PLOT DATE = 10/16/2012

DESIGNED -
 DRAWN -
 CHECKED -
 DATE -

REVISED -
 REVISED -
 REVISED -
 REVISED -

**STATE OF ILLINOIS
 DEPARTMENT OF TRANSPORTATION**

**CROSS SECTIONS
 US ROUTE 34**

SCALE: NOTED SHEET NO. 5 OF 209 SHEETS STA. 515+00.00 TO STA. 515+28.52

F.A.P. RTE.	SECTION	COUNTY	TOTAL SHEETS	SHEET NO.
313	7-2 ; 6-1	HENDERSON	976	580
CONTRACT NO. 68409				

ILLINOIS FED. AID PROJECT