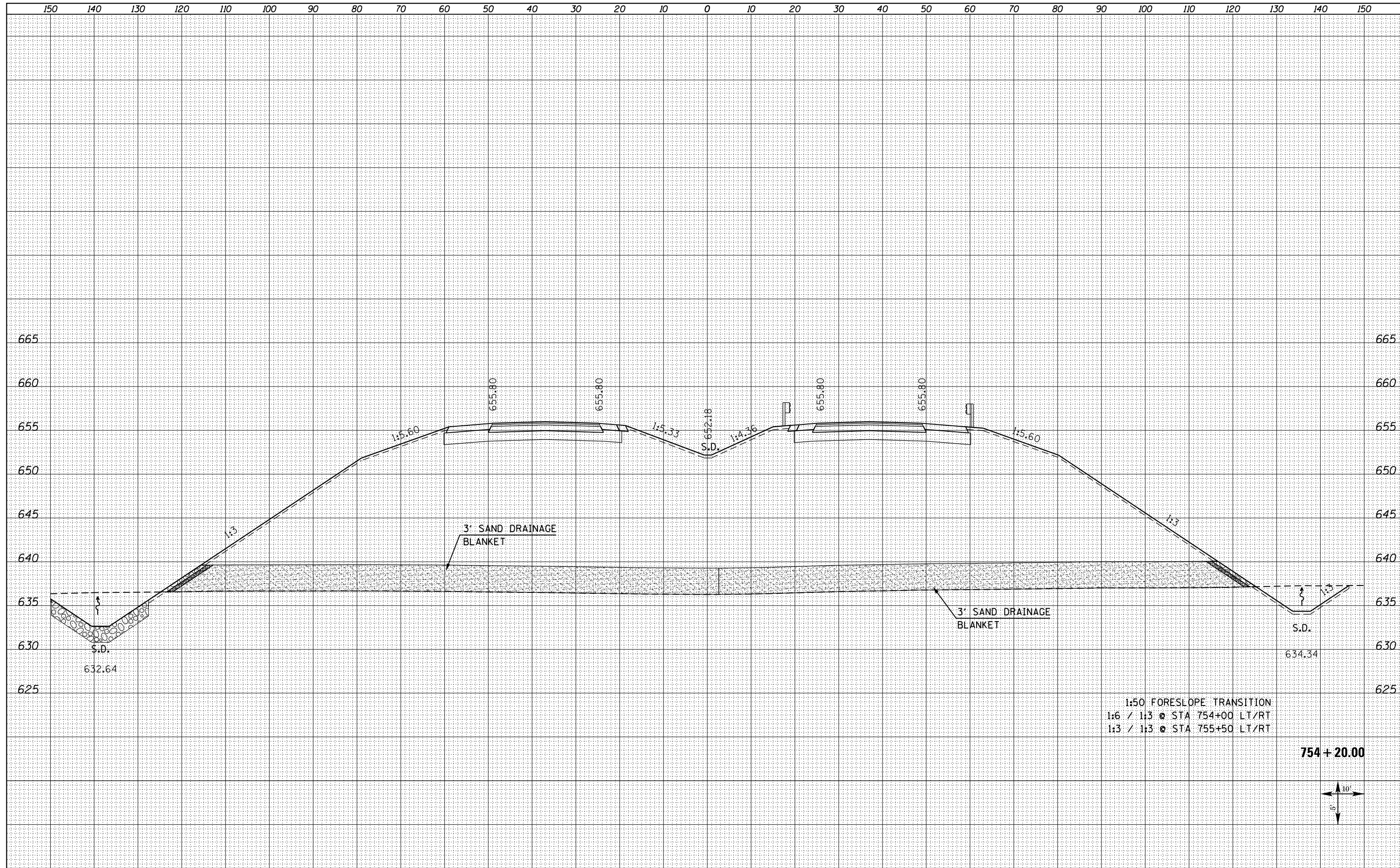


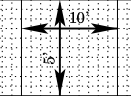
DATE	
BY	
FINAL SURVEY	SURVEYED
NOTE BOOK	PLOTTED
NO.	TEMPLATE
	AREAS CHECKED

DATE	
BY	
ORIGINAL SURVEY	SURVEYED
NOTE BOOK	PLOTTED
NO.	TEMPLATE
	AREAS CHECKED



1:50 FORESLOPE TRANSITION  
 1:6 / 1:3 @ STA 754+00 LT/RT  
 1:3 / 1:3 @ STA 755+50 LT/RT

754 + 20.00



FILE NAME = D468409-SHT-XSSHT-US34-B.dgn	USER NAME = danw	DESIGNED - DBS	REVISED -	<b>STATE OF ILLINOIS DEPARTMENT OF TRANSPORTATION</b>	<b>CROSS SECTIONS US ROUTE 34</b>		F.A.P. RTE. 313	SECTION 7-2 ; 6-1	COUNTY HENDERSON	TOTAL SHEETS 976	SHEET NO. 750	
PLOT SCALE = 20.0000' / in.	CHECKED - CSB	REVISED -	REVISED -		SCALE: NOTED	SHEET NO. 152 OF 209 SHEETS	STA. 754+20.00 TO STA. 754+20.00	CONTRACT NO. 68409		ILLINOIS FED. AID PROJECT		
PLOT DATE = 10/16/2012	DATE - 10/2012	REVISED -	REVISED -									