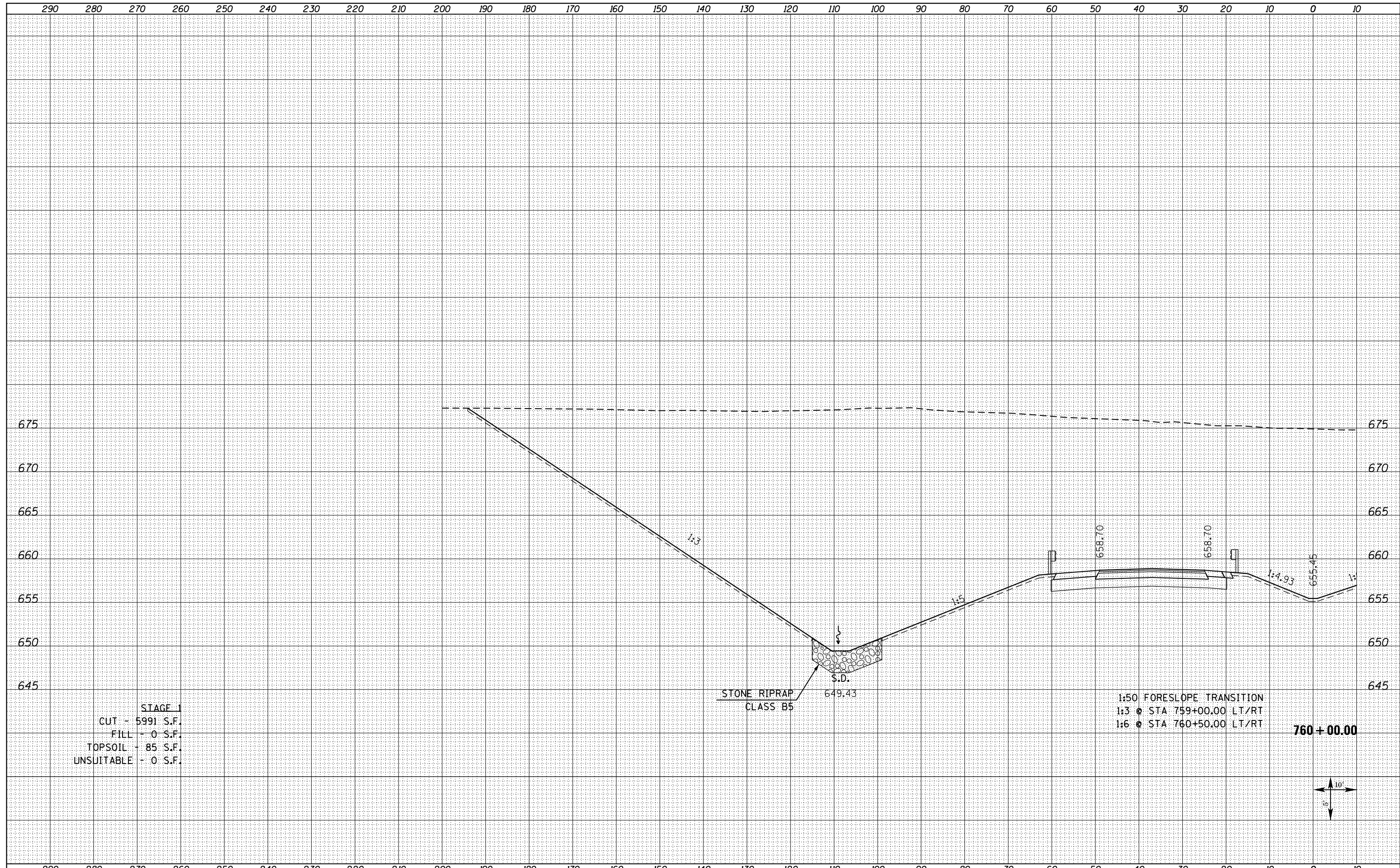


DATE	
BY	
SURVEYED	
PLOTTED	
TEMPLATE	
AREAS	
CHECKED	
FINAL SURVEY	
NOTE BOOK	
NO.	

DATE	
BY	
SURVEYED	
PLOTTED	
TEMPLATE	
AREAS	
CHECKED	
ORIGINAL SURVEY	
NOTE BOOK	
NO.	

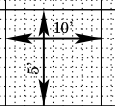


STAGE 1
 CUT - 5991 S.F.
 FILL - 0 S.F.
 TOPSOIL - 85 S.F.
 UNSUITABLE - 0 S.F.

STONE RIPRAP
 CLASS B5
 S.D.
 649.43

1:50 FORESLOPE TRANSITION
 1:3 @ STA 759+00.00 LT/RT
 1:6 @ STA 760+50.00 LT/RT

760+00.00



FILE NAME = D468409-SHT-XSHT-US34-B.dgn	USER NAME = danw	DESIGNED - DBS	REVISED -	STATE OF ILLINOIS DEPARTMENT OF TRANSPORTATION	CROSS SECTIONS US ROUTE 34		F.A.P. RTE. 313	SECTION 7-2 ; 6-1	COUNTY HENDERSON	TOTAL SHEETS 976	SHEET NO. 761
PLOT SCALE = 20.0000' / in.	CHECKED - CSB	REVISED -	CONTRACT NO. 68409								
PLOT DATE = 10/16/2012	DATE - 10/2012	REVISED -	ILLINOIS FED. AID PROJECT								
SCALE: NOTED			SHEET NO. 161L OF 209 SHEETS				STA. 760+00.00 TO STA. 760+00.00				