

F.A.P. RTE.	SECTION	COUNTY	TOTAL SHEETS	SHEET NO.
315	119RS-4, 18RS & (57-10)RS	MCLEAN	225	1
		ILLINOIS	CONTRACT NO. 70783	

**STATE OF ILLINOIS**  
**DEPARTMENT OF TRANSPORTATION**  
**DIVISION OF HIGHWAYS**

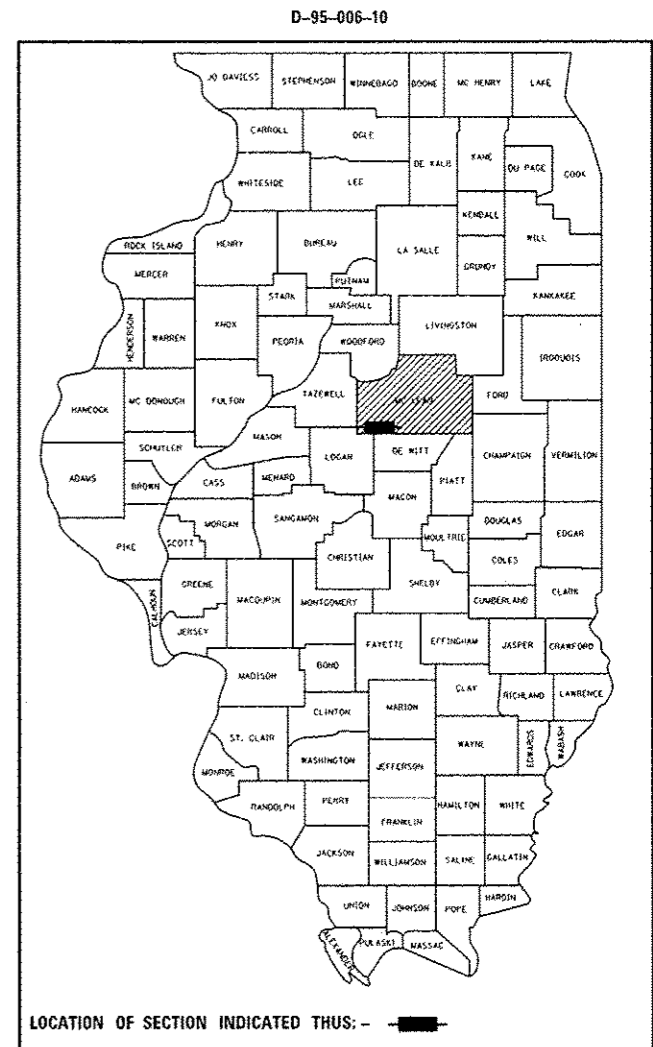
FOR INDEX OF SHEETS, SEE SHEET NO. 2  
 FOR SUMMARY OF QUANTITIES, SEE SHEETS 5-7

**STRUCTURE INFORMATION**

S.N.	SCOPE OF WORK
057-8006	HMA RESURFACING & RIPRAP
057-8007	HMA RESURFACING
057-8008	HMA RESURFACING
057-8009	HMA RESURFACING, DRAINAGE REPAIRS, RIPRAP
057-8010	HMA RESURFACING
057-8011	HMA RESURFACING
057-8012	HMA RESURFACING
057-8013	HMA RESURFACING
057-8014	HMA RESURFACING
057-8015	HMA RESURFACING, DRAINAGE REPAIRS, RIPRAP
057-8016	HMA RESURFACING

# PROPOSED HIGHWAY PLANS

**FAP ROUTE 315 (US 136)**  
**SECTION 119RS-4, 18RS & (57-10)RS**  
**PROJECT ACNHF-0315(062)**  
**RESURFACING (SMART)**  
**MCLEAN COUNTY**  
**LOGAN CO LINE TO I-55 AT MCLEAN**

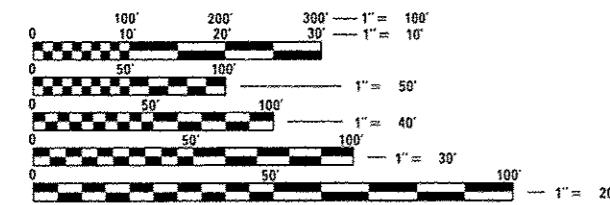


CURRENT ADT			
OTHER PRINCIPAL ARTERIAL	FAP 315 (US 136)		
	LEG "A"	LEG "B"	LEG "C"
ADT (2010)	3,200	3,900	6,000
SU%	9.0%	9.1%	12.1%
MU%	12.4%	11.0%	10.6%
PV%	78.6%	79.9%	77.3%

TRAFFIC DATA LOCATIONS		
OTHER PRINCIPAL ARTERIAL	FAP 315 (US 136)	
LEG "A"	= LOGAN COUNTY LINE TO FAS 1773 (OLD RTE 66).	
LEG "B"	= FAS 1773 (OLD RTE 66) TO FAS 1488 (MAIN ST)	
LEG "C"	= FAS 1488 (MAIN ST) TO FAI 55.	

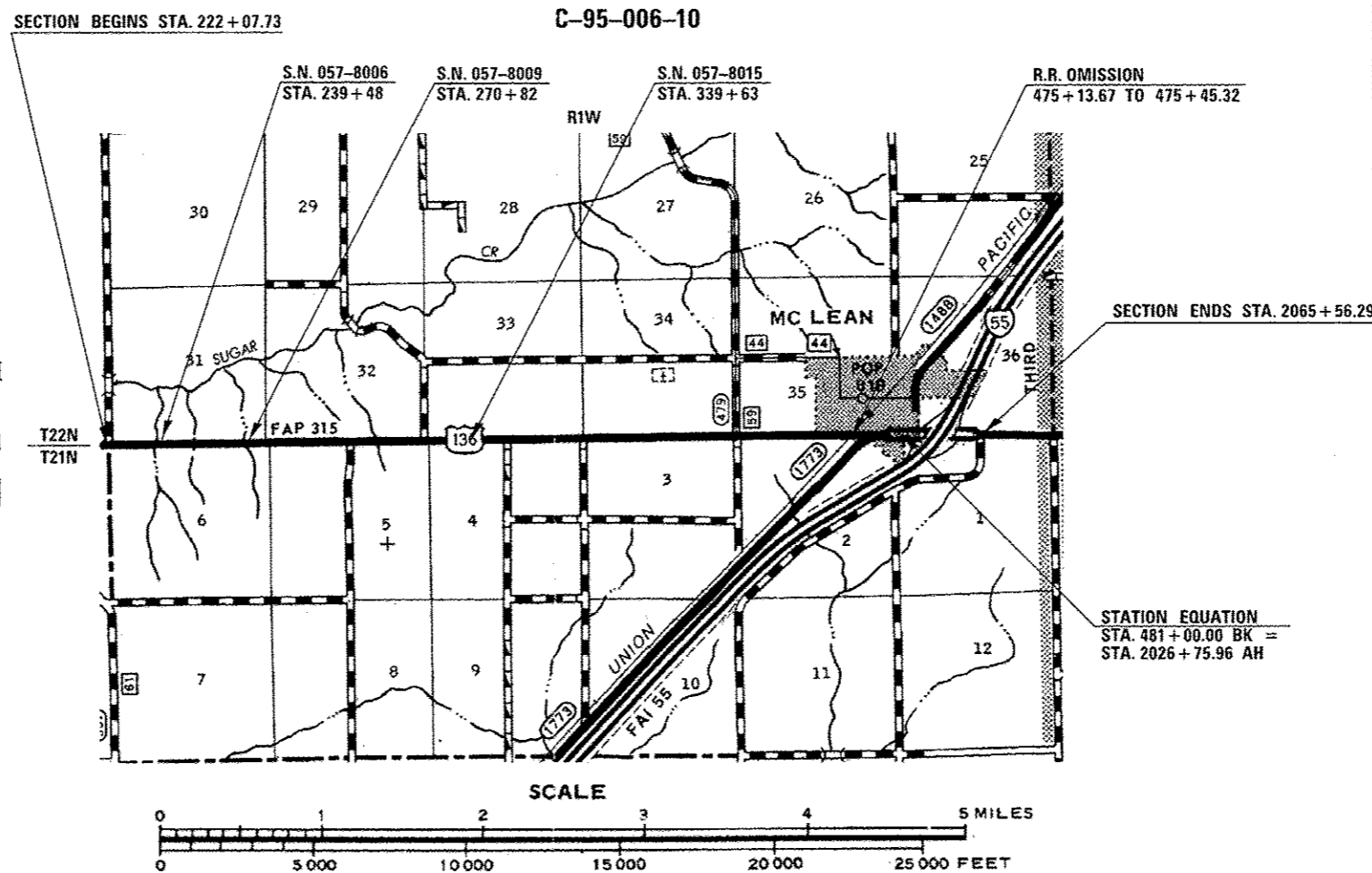
DESIGN DESIGNATION
N/A



FULL SIZE PLANS HAVE BEEN PREPARED USING STANDARD ENGINEERING SCALES. REDUCED SIZED PLANS WILL NOT CONFORM TO STANDARD SCALES. IN MAKING MEASUREMENTS ON REDUCED PLANS, THE ABOVE SCALES MAY BE USED.

J.U.L.I.E.  
 JOINT UTILITY LOCATION INFORMATION FOR EXCAVATION  
 1-800-892-0123 TOWNSHIPS  
 OR 811 MOUNT HOPE

**PROJECT ENGINEER: NANCY FASIG**  
**SQUAD LEADER: STEVE COOMBS**  
**DESIGNER: BEN OGLE**  
 (217) 465-4181  
**CONTRACT NO. 70783**



GROSS LENGTH = 29,772.60 FT. = 5.639 MILE  
 NET LENGTH = 29,740.95 FT. = 5.633 MILE

STATE OF ILLINOIS  
 DEPARTMENT OF TRANSPORTATION  
 DIVISION OF HIGHWAYS

SUBMITTED October 9, 2012  
Joseph E. Crowe (CRAG)  
 DEPUTY DIRECTOR OF HIGHWAYS, REGION 3 ENGINEER

Dec 7 2012  
John D. Baranzelli, P.E. /cr  
 ENGINEER OF DESIGN AND ENVIRONMENT

Dec 7 2012  
William R. Frey /cr  
 DIRECTOR OF HIGHWAYS, CHIEF ENGINEER

**PRINTED BY THE AUTHORITY  
OF THE STATE OF ILLINOIS**