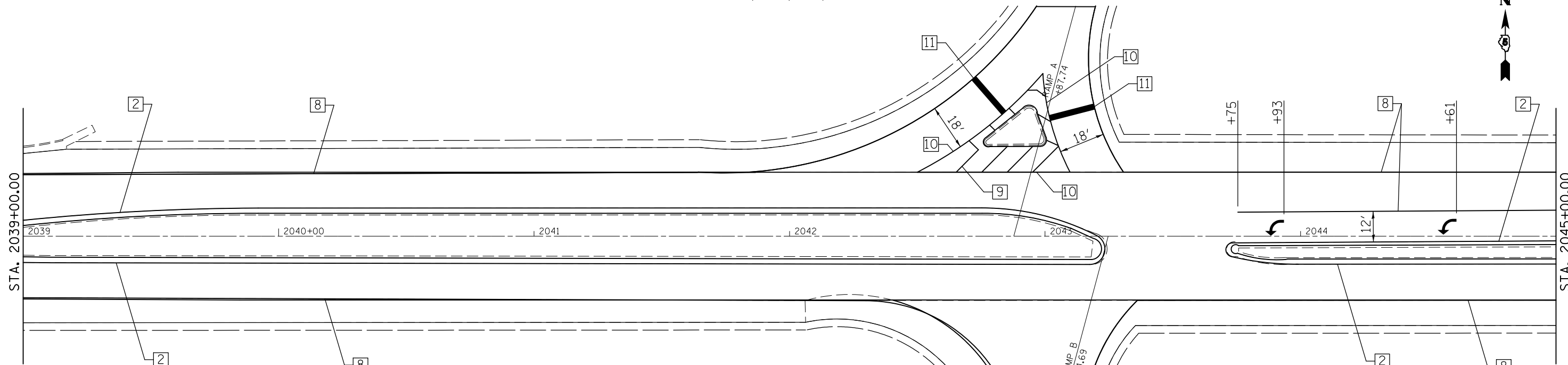


SEC 36 , T22N, R1W, 3RD PM

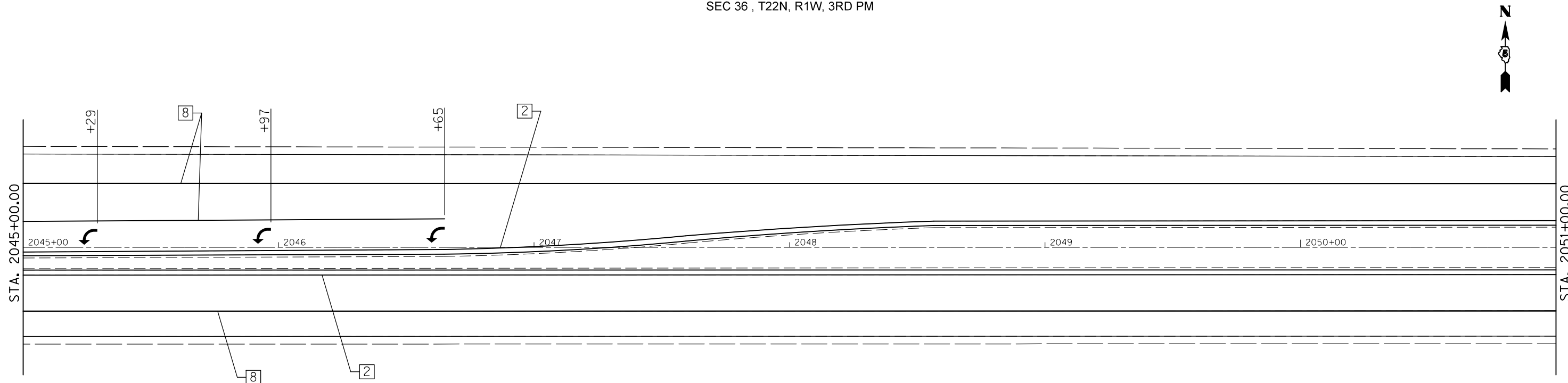


**TYPICAL PAVEMENT MARKING LEGEND**

1	4" (100) SKIP-DASH (YELLOW)	8	4" (100) SOLID (WHITE)
2	4" (100) SOLID (YELLOW)	10	6" (150) SOLID (WHITE)
3	12" (300) DIAGONAL (YELLOW)	11	24" (600) STOP BAR (WHITE)
4	4" (100) DOUBLE YELLOW (NARROW)		

SEC 1 , T22N, R1W, 3RD PM

SEC 36 , T22N, R1W, 3RD PM



**TYPICAL PAVEMENT MARKING LEGEND**

1	4" (100) SKIP-DASH (YELLOW)	8	4" (100) SOLID (WHITE)
2	4" (100) SOLID (YELLOW)	10	6" (150) SOLID (WHITE)
3	12" (300) DIAGONAL (YELLOW)	11	24" (600) STOP BAR (WHITE)
4	4" (100) DOUBLE YELLOW (NARROW)		

SEC 1 , T22N, R1W, 3RD PM

FILE NAME =	USER NAME = ogiebj	DESIGNED -	REVISED -
ei:\pw\work\p\dot\ogiebj\d0244982\0570783-sh1-pmk.dgn		DRAWN -	REVISED -
	PLOT SCALE = 40.0000' / in.	CHECKED -	REVISED -
	PLOT DATE = 10/9/2012	DATE -	REVISED -

**STATE OF ILLINOIS  
DEPARTMENT OF TRANSPORTATION**

**PAVEMENT MARKINGS**

SCALE: SHEET NO. OF SHEETS STA. TO STA.

F.A.P. RTE.	SECTION	COUNTY	TOTAL SHEETS	SHEET NO.
315	119RS-4,18RS&(57-10)RS	McLean	225	44
CONTRACT NO. 70783			ILLINOIS FED. AID PROJECT	