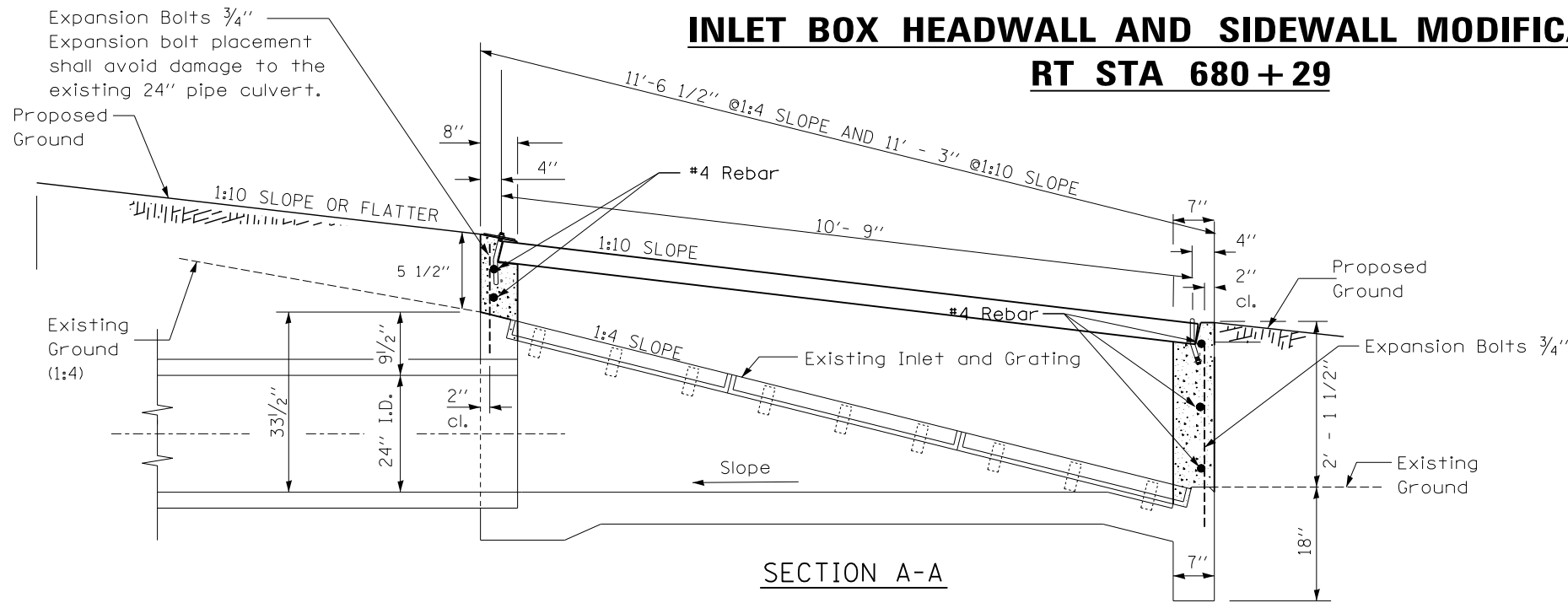


INLET BOX HEADWALL AND SIDEWALL MODIFICATION

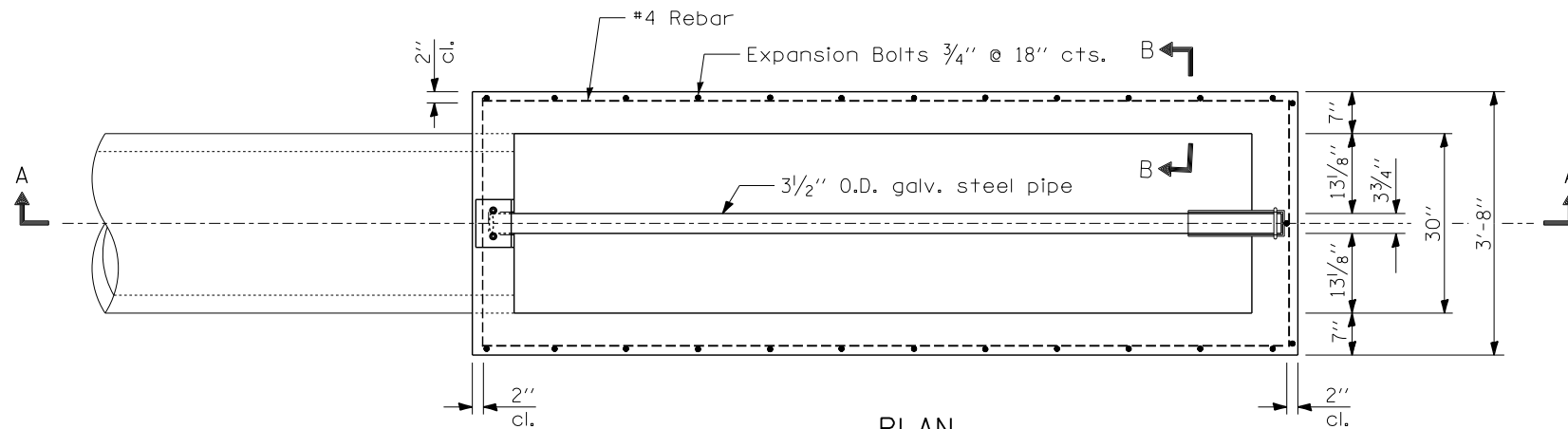
RT STA 680+29

NOTES

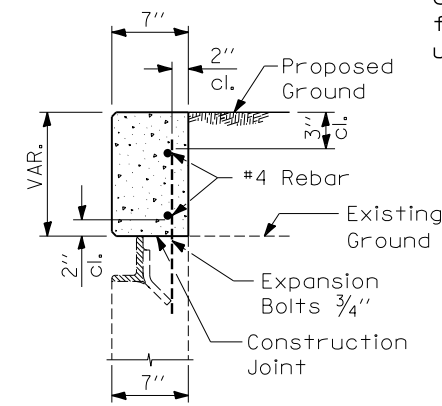
- All edges shall have standard $\frac{3}{4}$ " chamfers.
- CLASS SI CONCRETE shall be used throughout.
- Expansion bolts shall extend a minimum 4" into new concrete.
- The contractor will be responsible for checking steel pipe length and field dimensions prior to ordering to insure proper installation of grating.
- Existing angle frame and main bearing bars shall remain in place. Existing steel grating shall be removed and delivered to Bloomington maintenance storage yard at no additional cost to the state.
- The inlet shall be backfilled in accordance with the Standard Specifications.
- All work and materials shall be in accordance with applicable portions of Section 542. The galvanized steel pipe, steel top anchor plate, U bolts, nylon insert hex lock nuts and washers and all work associated with these items will not be measured for payment and shall be included in the contract unit price (each) for INLET TO BE RECONSTRUCTED (SPL)



SECTION A-A

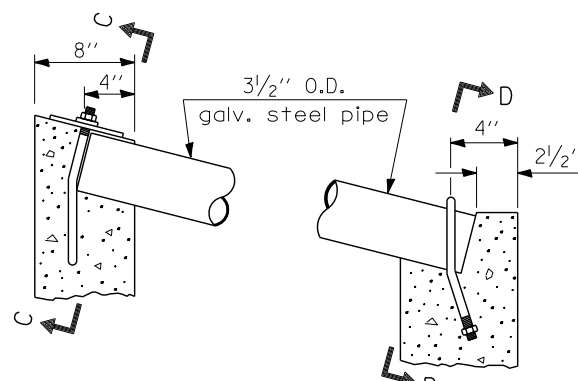


PLAN

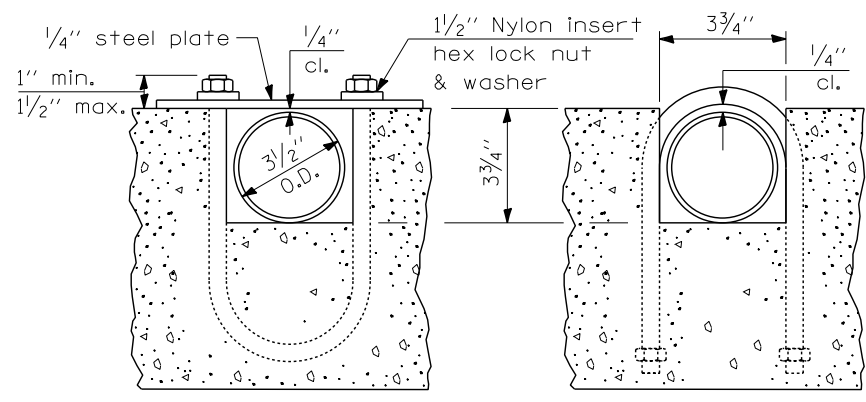


SECTION B-B

Bill of Materials		
LOCATION RT. 680+30		
54002020	each	16
$\frac{3}{4}$ " Bolts		
54248500	cu. yd.	0.6
Concrete Headwalls		
50800105	pound	16.5
Rebar size #4		
Galv. Steel Pipe	$\frac{3}{2}$ " O.D.	10'-6"

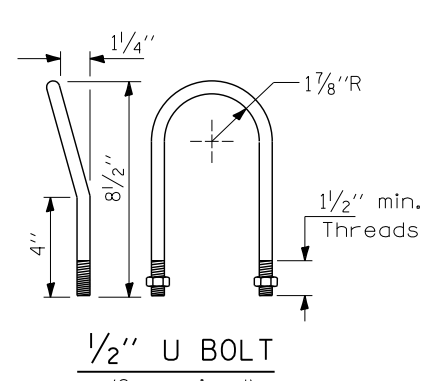


DETAIL AT BLOCKOUTS

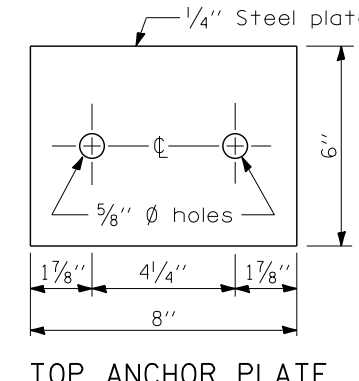


SECTION C-C

SECTION D-D



$\frac{1}{2}$ " U BOLT
(2-required)



TOP ANCHOR PLATE
(1-required)