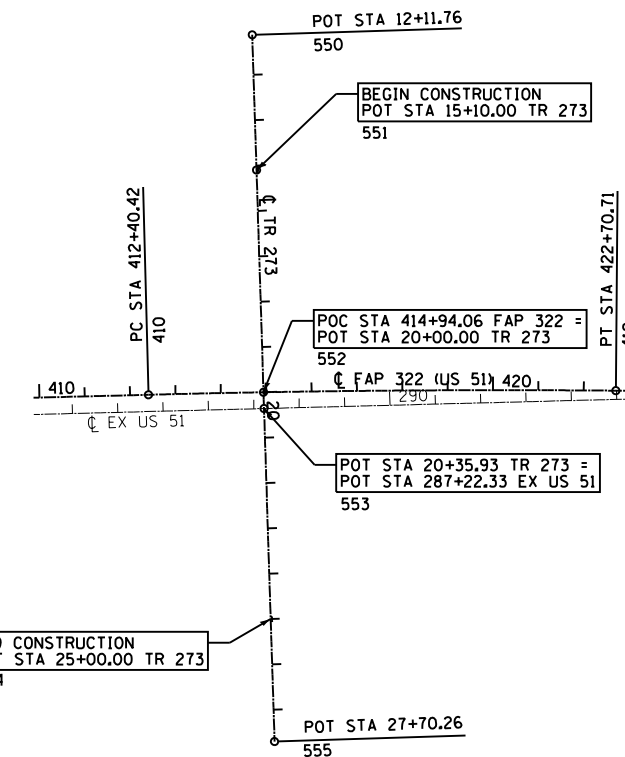
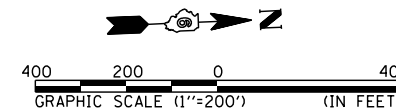
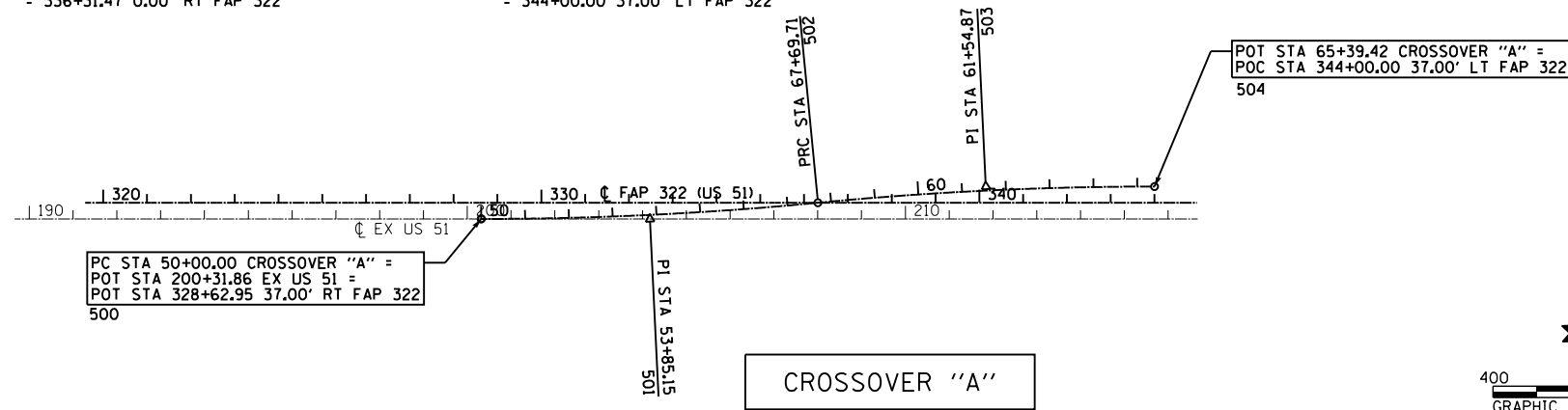


F.A.P. RTE.	SECTION	COUNTY	TOTAL SHEETS	SHEET NO.
322	11-13	CHRISTIAN	437	61
STA.		TO STA.		
FED. ROAD DIST. NO.		ILLINOIS FED. AID PROJECT		

**CROSSOVER "A" CURVE #1 DATA**  
 501 PI STA. = 53+85.15  
 = 332+48.10 37.00' RT FAP 322  
 $\Delta = 5^\circ 30' 46''$  (LT)  
 $D = 0^\circ 42' 58''$   
 $R = 8,000.00'$   
 $T = 385.15'$   
 $L = 769.71'$   
 $E = 9.27'$   
 500 P.C. STA. = 50+00.00  
 = 328+62.95 37.00' RT FAP 322  
 502 P.T. STA. = 57+69.71  
 = 336+31.47 0.00' RT FAP 322

**CROSSOVER "A" CURVE #2 DATA**  
 503 PI STA. = 61+54.87  
 = 340+14.85 37.00' LT FAP 322  
 $\Delta = 5^\circ 30' 46''$  (RT)  
 $D = 0^\circ 42' 58''$   
 $R = 8,000.00'$   
 $T = 385.15'$   
 $L = 769.71'$   
 $E = 9.27'$   
 502 P.C. STA. = 57+69.71  
 = 336+31.47 0.00' RT FAP 322  
 504 P.T. STA. = 65+39.42  
 = 344+00.00 37.00' LT FAP 322

CROSSOVER "A"	CONTROL POINTS		
	POINT	NORTHING	EASTING
	500	1,006,915.18	2,613,859.63
	501	1,007,300.12	2,613,872.61
	502	1,007,684.52	2,613,848.55
	503	1,008,068.92	2,613,824.49
	504	1,008,453.86	2,613,837.47



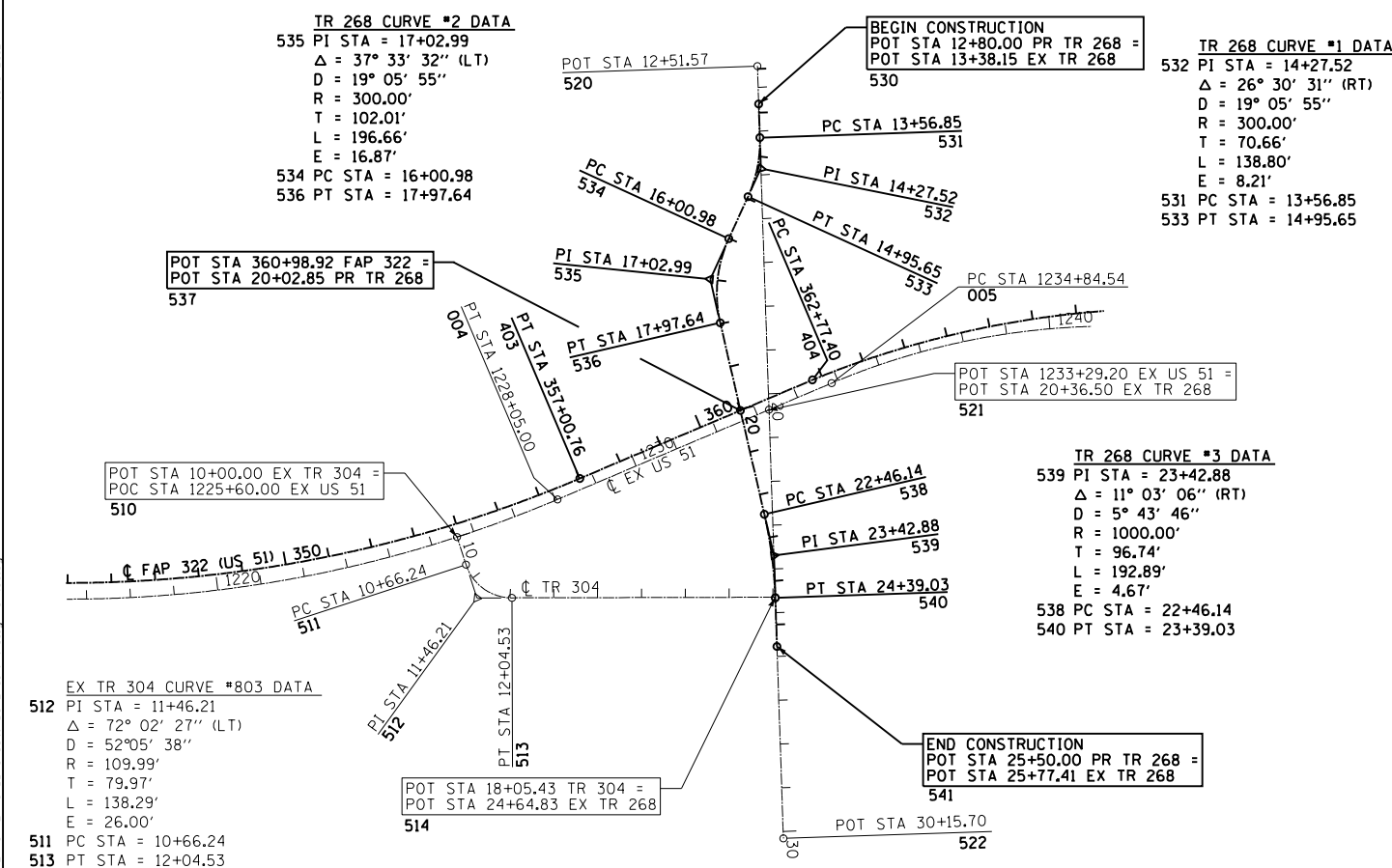
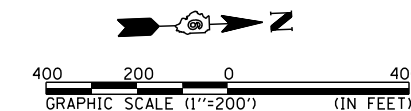
END CONSTRUCTION  
 POT STA 25+00.00 TR 273  
 554

EX TR 304	CONTROL POINTS		
	POINT	NORTHING	EASTING
	510	1,009,444.12	2,613,803.08
	511	1,009,462.56	2,613,866.70
	512	1,009,484.82	2,613,943.51
	513	1,009,564.75	2,613,946.01
	514	1,010,165.36	2,613,964.83

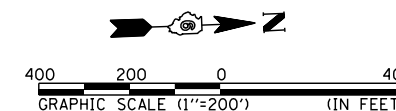
EX TR 268	CONTROL POINTS		
	POINT	NORTHING	EASTING
	520	1,010,165.48	2,612,751.56
	521	1,010,165.40	2,613,536.49
	522	1,010,165.30	2,614,515.69

PR TR 268	CONTROL POINTS		
	POINT	NORTHING	EASTING
	530	1,010,165.47	2,612,838.14
	531	1,010,165.46	2,612,914.99
	532	1,010,165.46	2,612,985.66
	533	1,010,133.91	2,613,048.89
	534	1,010,086.89	2,613,143.15
	535	1,010,041.36	2,613,234.43
	536	1,010,060.90	2,613,334.54
	537	1,010,100.22	2,613,535.95
	538	1,010,146.832	2,613,774.73
	539	1,010,165.37	2,613,869.69
	540	1,010,165.36	2,613,966.43
	541	1,010,165.35	2,614,077.40

TR 274	CONTROL POINTS		
	POINT	NORTHING	EASTING
	550	1,015,497.48	2,612,574.56
	551	1,015,496.85	2,612,872.80
	552	1,015,495.80	2,613,362.80
	553	1,015,495.73	2,613,398.73
	554	1,015,494.74	2,613,862.80
	555	1,015,494.16	2,614,133.06



TR 304 / TR 268



REVISIONS	
NAME	DATE

ILLINOIS DEPARTMENT OF TRANSPORTATION  
 ALIGNMENT & BENCHMARK DATA  
 SHEET 3 OF 5  
 FAP 322 (US 51)  
 SECTION 11-13  
 CHRISTIAN COUNTY

SCALE: 1"=200'  
 DATE: \_\_\_\_\_ DRAWN BY: SEB  
 CHECKED BY: \_\_\_\_\_

D:\Projects\010325\1\SO\11\PLANS\_NEW\ACAD\_Sheets\05\2961\sh11-13\alignmen103.dgn 10/5/2012