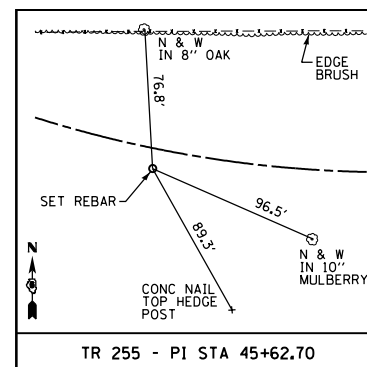
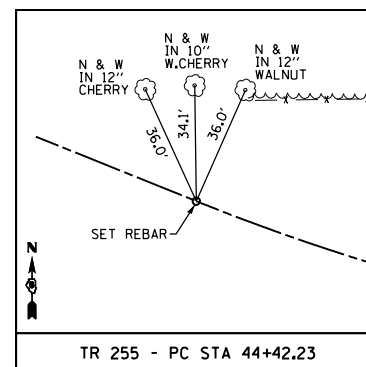
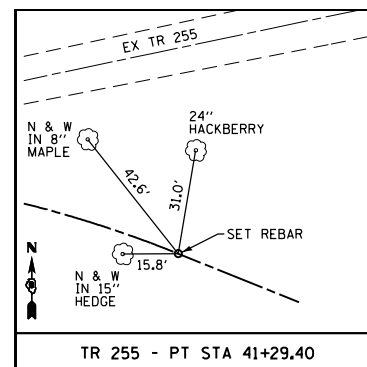
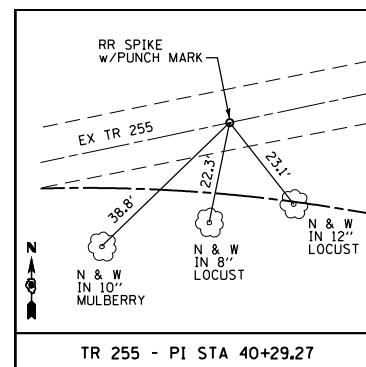
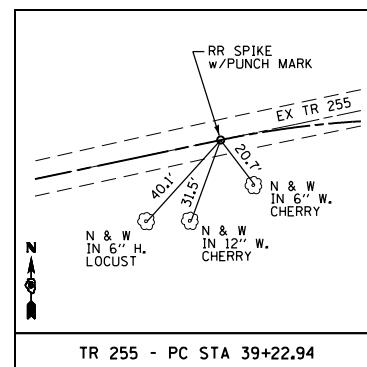
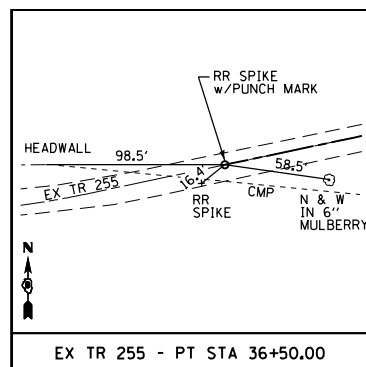
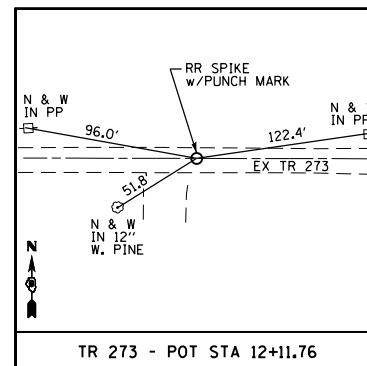
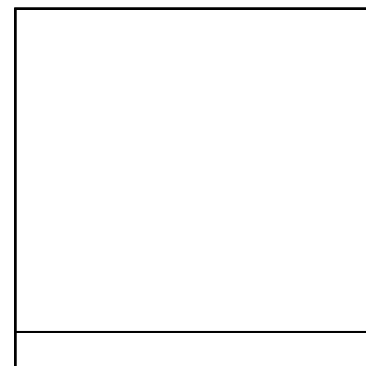
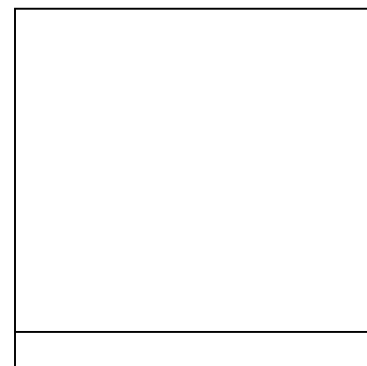
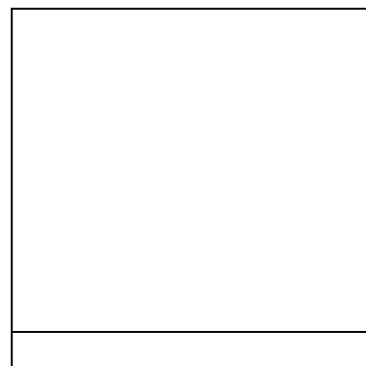
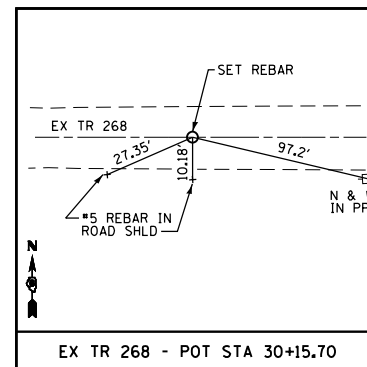
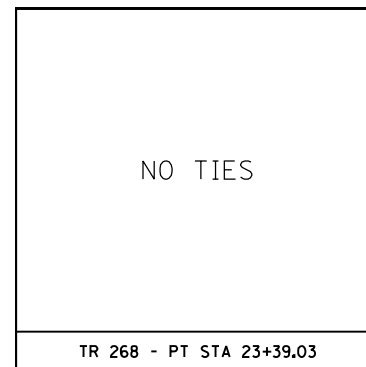
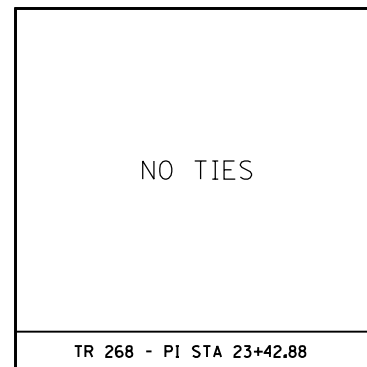
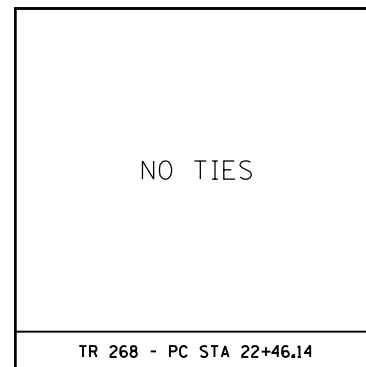
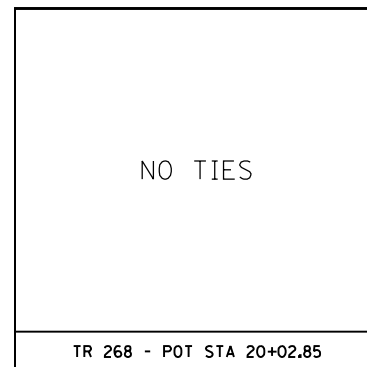
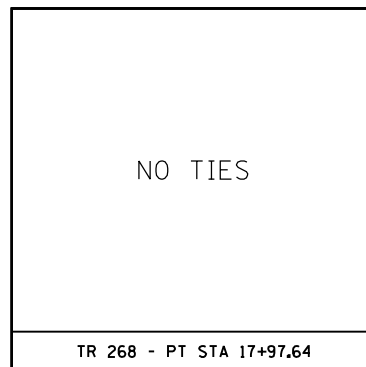
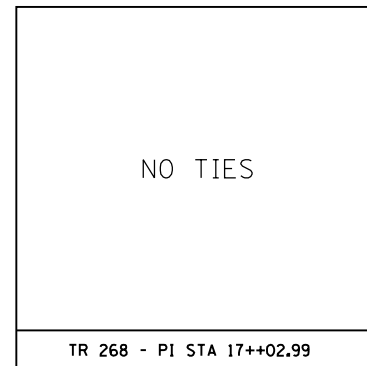
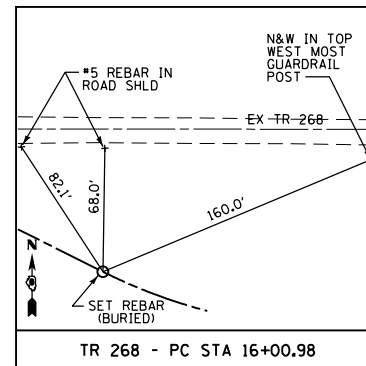
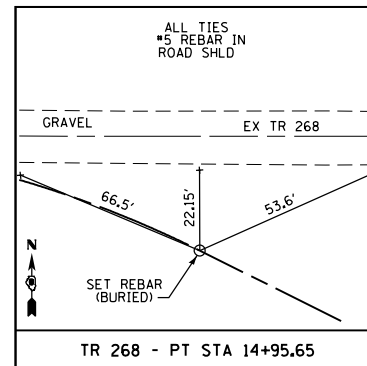
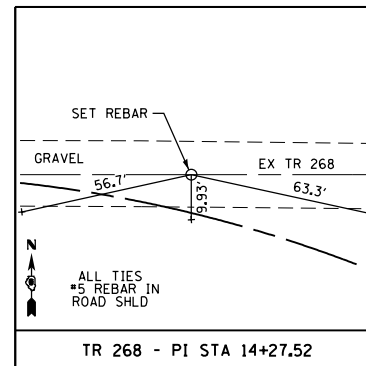
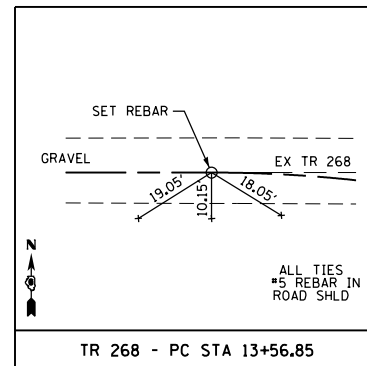
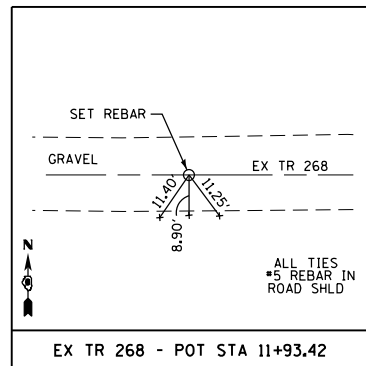


F.A.P. RTE.	SECTION	COUNTY	TOTAL SHEETS	SHEET NO.
322	11-13	CHRISTIAN	437	65
STA.		TO STA.		
FED. ROAD DIST. NO.		ILLINOIS FED. AID PROJECT		



REVISIONS	
NAME	DATE

ILLINOIS DEPARTMENT OF TRANSPORTATION
 HORIZONTAL CONTROL TIES
 FAP 322 (US 51)
 SECTION 11-13
 CHRISTIAN COUNTY
 SCALE: NONE
 DATE: _____ DRAWN BY: _____ CHECKED BY: _____

10/5/2012
 G:\01\Ties\010325\1 SOUTH PLANS NEW\CA00 - Sheets\06\2961-sh1-ctrl-Control Ties.dwg