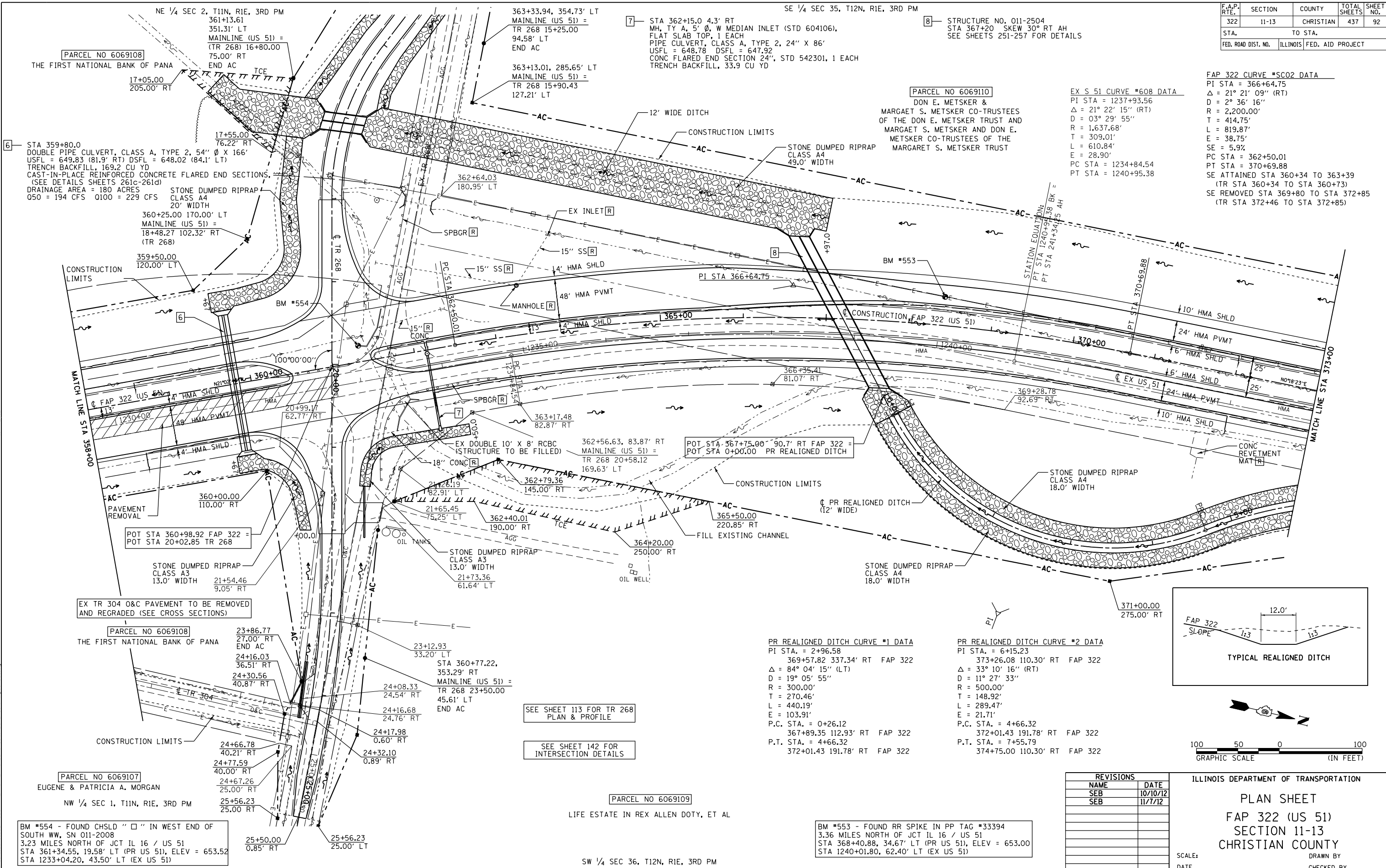


F.A.P. RTE.	SECTION	COUNTY	TOTAL SHEETS	SHEET NO.
322	11-13	CHRISTIAN	437	92
STA.		TO STA.		
FED. ROAD DIST. NO.		ILLINOIS FED. AID PROJECT		



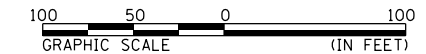
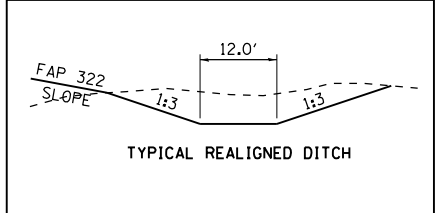
FAP 322 CURVE #SCO2 DATA
 PI STA = 366+64.75
 $\Delta = 21^\circ 21' 09''$ (RT)
 $D = 2^\circ 36' 16''$
 $R = 2,200.00'$
 $T = 414.75'$
 $L = 819.87'$
 $E = 38.75'$
 $SE = 5.9\%$
 PC STA = 362+50.01
 PT STA = 370+69.88
 SE ATTAINED STA 360+34 TO 363+39
 (TR STA 360+34 TO STA 360+73)
 SE REMOVED STA 369+80 TO STA 372+85
 (TR STA 372+46 TO STA 372+85)

EX S 51 CURVE #608 DATA
 PI STA = 1237+93.56
 $\Delta = 21^\circ 22' 15''$ (RT)
 $D = 03^\circ 29' 55''$
 $R = 1,637.68'$
 $T = 309.01'$
 $L = 610.84'$
 $E = 28.90'$
 PC STA = 1234+84.54
 PT STA = 1240+95.38

PARCEL NO 6069110
 DON E. METSKER &
 MARGAET S. METSKER CO-TRUSTEES
 OF THE DON E. METSKER TRUST AND
 MARGAET S. METSKER AND DON E.
 METSKER CO-TRUSTEES OF THE
 MARGAET S. METSKER TRUST

PR REALIGNED DITCH CURVE #1 DATA
 PI STA. = 2+96.58
 369+57.82 337.34' RT FAP 322
 $\Delta = 84^\circ 04' 15''$ (LT)
 $D = 19^\circ 05' 55''$
 $R = 300.00'$
 $T = 270.46'$
 $L = 440.19'$
 $E = 103.91'$
 P.C. STA. = 0+26.12
 367+89.35 112.93' RT FAP 322
 P.T. STA. = 4+66.32
 372+01.43 191.78' RT FAP 322

PR REALIGNED DITCH CURVE #2 DATA
 PI STA. = 6+15.23
 373+26.08 110.30' RT FAP 322
 $\Delta = 33^\circ 10' 16''$ (RT)
 $D = 11^\circ 27' 33''$
 $R = 500.00'$
 $T = 148.92'$
 $L = 289.47'$
 $E = 21.71'$
 P.C. STA. = 4+66.32
 372+01.43 191.78' RT FAP 322
 P.T. STA. = 7+55.79
 374+75.00 110.30' RT FAP 322



REVISIONS	
NAME	DATE
SEB	10/10/12
SEB	11/7/12

ILLINOIS DEPARTMENT OF TRANSPORTATION
PLAN SHEET
 FAP 322 (US 51)
 SECTION 11-13
 CHRISTIAN COUNTY
 SCALE: _____ DRAWN BY _____
 DATE _____ CHECKED BY _____
 FAP 322 (US 51) PLAN STA 358+00 TO STA 373+00

SEE SHEET 113 FOR TR 268
 PLAN & PROFILE

SEE SHEET 142 FOR
 INTERSECTION DETAILS

PARCEL NO 6069109
 LIFE ESTATE IN REX ALLEN DOTY, ET AL

BM #553 - FOUND RR SPIKE IN PP TAG #33394
 3.26 MILES NORTH OF JCT IL 16 / US 51
 STA 368+40.88, 34.67' LT (PR US 51), ELEV = 653.00
 STA 1240+01.80, 62.40' LT (EX US 51)

BM #554 - FOUND CHSLD " □ " IN WEST END OF SOUTH WW, SN 011-2008
 3.23 MILES NORTH OF JCT IL 16 / US 51
 STA 361+34.55, 19.58' LT (PR US 51), ELEV = 653.52
 STA 1233+04.20, 43.50' LT (EX US 51)

11/7/2012
 G:\Files\010325\South Plains New VCAD Sheets\05\2961-sh1-plan\plan03a.dgn