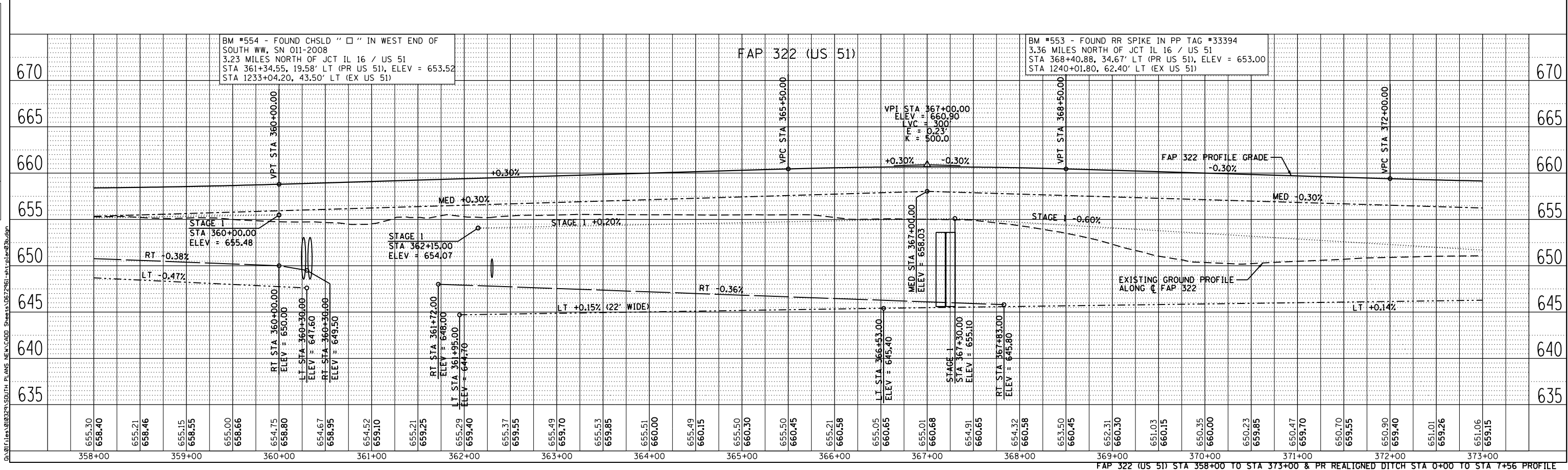
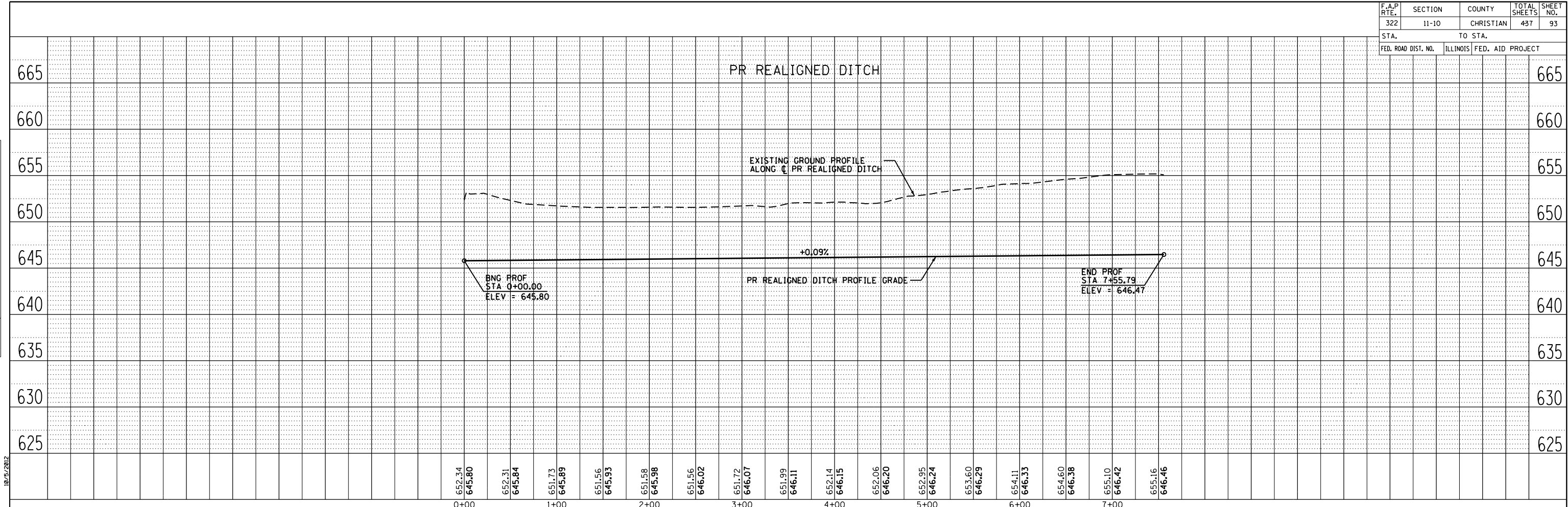


F.A.P. RTE.	SECTION	COUNTY	TOTAL SHEETS	SHEET NO.
322	11-10	CHRISTIAN	437	93
STA.		TO STA.		
FED. ROAD DIST. NO.		ILLINOIS	FED. AID	PROJECT



FAP 322 (US 51) STA 358+00 TO STA 373+00 & PR REALIGNED DITCH STA 0+00 TO STA 7+56 PROFILE

PLAN	DATE
SURVEYED	
NOTE BOOK	
GRADES CHECKED	
PLAN CHECKED	
DATE	

PROFILE	DATE
SURVEYED	
GRADES CHECKED	
PLAN CHECKED	
DATE	

D:\Files\010323\South Plans\New\1000 Sheets\10672481-ent-plan\p10323.dwg