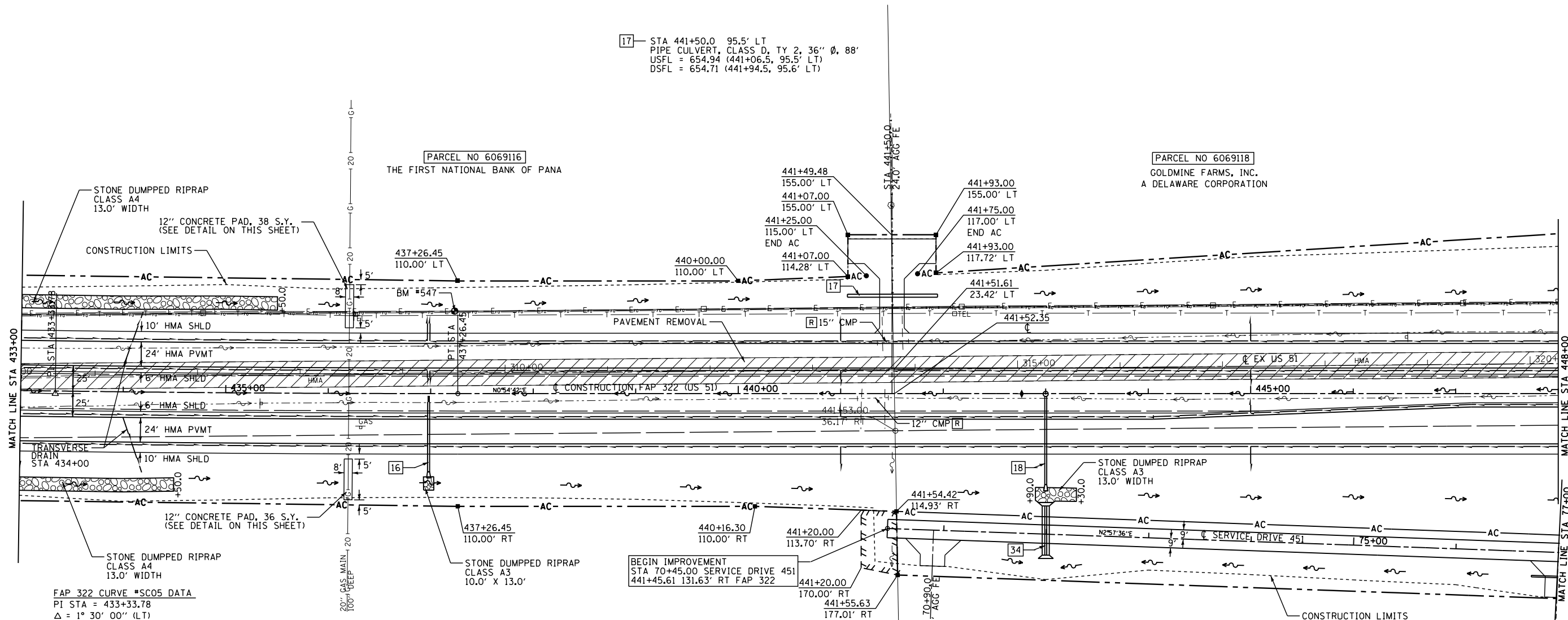


F.A.P. RTE.	SECTION	COUNTY	TOTAL SHEETS	SHEET NO.
322	11-13	CHRISTIAN	437	98
STA.		TO STA.		
FED. ROAD DIST. NO.		ILLINOIS	FED. AID PROJECT	

SE 1/4 SEC 26, T12N, R1E, 3RD PM

NE 1/4 SEC 26, T12N, R1E, 3RD PM



FAP 322 CURVE *SC05 DATA
 PI STA = 433+33.78
 $\Delta = 1^\circ 30' 00''$ (LT)
 $D = 0^\circ 11' 28''$
 $R = 30,000.00'$
 $T = 392.72'$
 $L = 785.40'$
 $E = 2.57'$
 $SE = NONE$
 $PC STA = 429+41.05$
 $PT STA = 437+26.45$

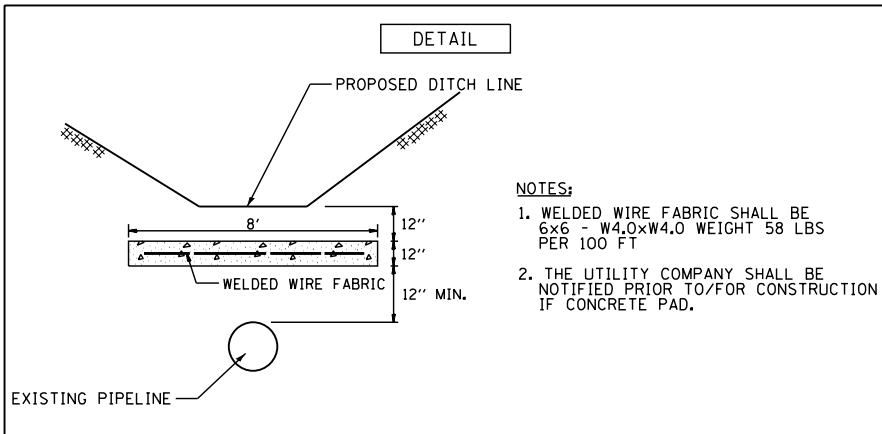
17 - STA 441+50.0 95.5' LT
 PIPE CULVERT, CLASS D, TY 2, 36" ϕ , 88'
 USFL = 654.94 (441+06.5, 95.5' LT)
 DSFL = 654.71 (441+94.5, 95.6' LT)

BEGIN IMPROVEMENT
 STA 70+45.00 SERVICE DRIVE 451
 441+45.61 131.63' RT FAP 322

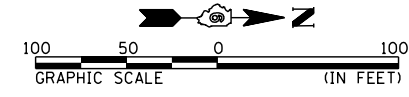
18 - STA 443+00.0 0.3' RT
 MH, TY A, 5' ϕ , W MEDIAN INLET (STD 604106) FLAT SLAB TOP, 1 EACH
 PIPE CULVERT, CLASS A, TYPE 2, 24" X 94"
 USFL = 656.59 DSFL = 654.70
 CONC FLARED END SECTION 24", STD 542301, 1 EACH
 TRENCH BACKFILL, 30.1 CU YD

34 - STA 71+99.5 SERVICE DRIVE 451 SKEW = 3° RT AH
 DOUBLE PIPE CULVERT, CLASS A, TYPE 2, 30" X 48"
 USFL = 655.83 (443+00.0, 157.6' RT FAP 322)
 DSFL = 654.76 (443+00.0, 109.6' RT FAP 322)
 CAST-IN-PLACE REINFORCED CONCRETE FLARED END SECTIONS,
 (SEE DETAILS SHEETS 261a-261b)
 TRENCH BACKFILL, 15.2 CU YD

16 - STA 436+98.0 RT
 INLET BOX, STD 542501, 1 EACH
 PIPE CULVERT, CLASS A, TY 2, 24" X 68"
 USFL = 656.98 (8.2' RT)
 DSFL = 655.94 (76.2' RT)
 CONC FLARED END SECTION 24", STD 542301, 1 EACH
 TRENCH BACKFILL, 11.6 CU YD



NOTES:
 1. WELDED WIRE FABRIC SHALL BE 6x6 - W4.0xW4.0 WEIGHT 58 LBS PER 100 FT
 2. THE UTILITY COMPANY SHALL BE NOTIFIED PRIOR TO/FOR CONSTRUCTION IF CONCRETE PAD.



REVISIONS	
NAME	DATE

ILLINOIS DEPARTMENT OF TRANSPORTATION
 FAP 322 (US 51)
 SECTION 11-13
 CHRISTIAN COUNTY
 SCALE: DRAWN BY
 DATE: CHECKED BY
 FAP 322 (US 51) STA 433+00 TO STA 448+00

SW 1/4 SEC 25, T12N, R1E, 3RD PM

NW 1/4 SEC 25, T12N, R1E, 3RD PM

10/5/2012 D:\01files\010325\1 SOUTH PLANS NEW\CAD00_Sheets\06\2961-sh11-plan\08a.dgn