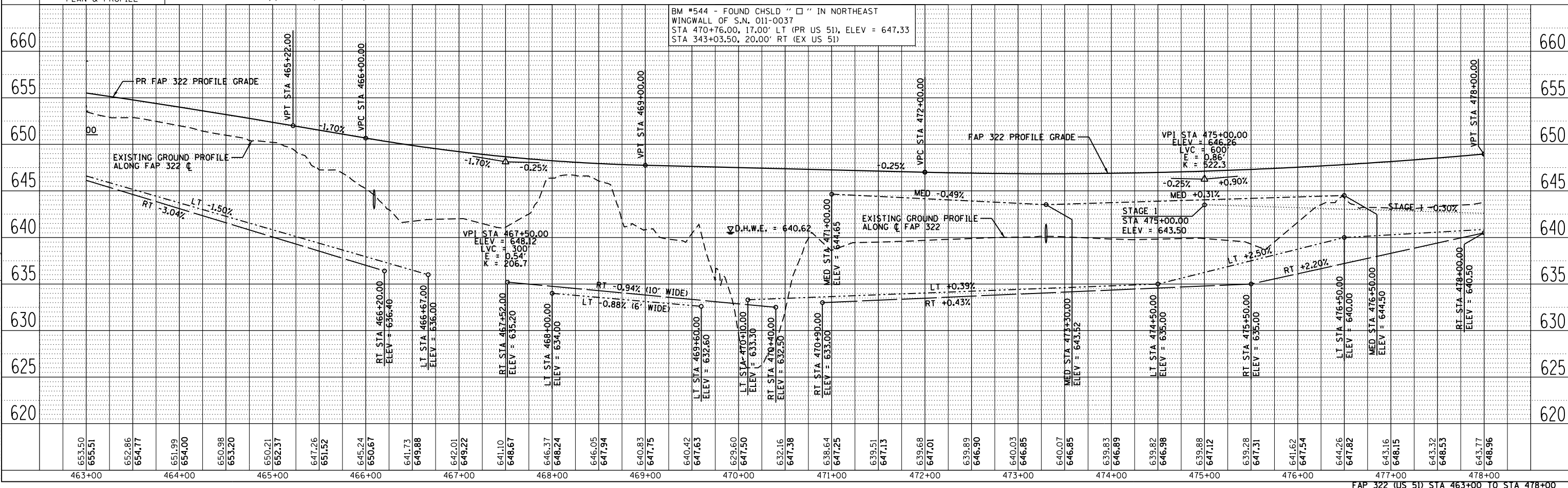


F.A.P. RTE.	SECTION	COUNTY	TOTAL SHEETS	SHEET NO.
322	11-13	CHRISTIAN	437	102
STA.	TO STA.			
FED. ROAD DIST. NO.	ILLINOIS FED. AID PROJECT			

20 - STA 466+09.0 3.7' LT  
 MH, TY A, 5' Ø, W MEDIAN INLET (STD 604106) FLAT SLAB TOP, 1 EACH  
 PIPE CULVERT, CLASS A, TYPE 2, 24" X 82"  
 USFL = 643.10 DSFL = 642.28  
 MH, TY A, 5' Ø, W TY 1 FR CLOSED LID, FLAT SLAB TOP, 1 EACH  
 PIPE CULVERT, CLASS A, TYPE 2, 24" X 18"  
 USFL = 637.00 DSFL = 636.82  
 CONC FLARED END SECTION 24", STD 542301, 1 EACH  
 TRENCH BACKFILL, 53.2 CU YD

21 - STA 473+30.0 0.7' RT  
 MH, TY A, 5' Ø, W MEDIAN INLET (STD 604106) FLAT SLAB TOP, 1 EACH  
 PIPE CULVERT, CLASS A, TYPE 2, 24" X 74"  
 USFL = 639.42 DSFL = 638.68  
 MH, TY A, 5' Ø, W TY 1 FR CLOSED LID, FLAT SLAB TOP, 1 EACH  
 PIPE CULVERT, CLASS A, TYPE 2, 24" X 16"  
 USFL = 634.28 DSFL = 634.12  
 CONC FLARED END SECTION 24", STD 542301, 1 EACH  
 TRENCH BACKFILL, 11.0 CU YD



BM #544 - FOUND CHSLD "□" IN NORTHEAST WINGWALL OF S.N. 011-0037  
 STA 470+76.00, 17.00' LT (PR US 51), ELEV = 647.33  
 STA 343+03.50, 20.00' RT (EX US 51)

FAP 322 (US 51) STA 463+00 TO STA 478+00

DATE	BY
DATE	BY

DATE	BY
DATE	BY

D:\Projects\010324\South Plains\New\CAD Sheets\05\2961-south-plan-10.dgn