

SE 1/4 SEC 26, T12N, R1E, 3RD PM

SW 1/4 SEC 25, T12N, R1E, 3RD PM

F.A.P. RTE.	SECTION	COUNTY	TOTAL SHEETS	SHEET NO.
322	11-13	CHRISTIAN	437	114
STA.		TO STA.		
FED. ROAD DIST. NO.		ILLINOIS FED. AID PROJECT		

PARCEL NO 6069116
FIRST NATIONAL BANK OF PANA

44— STA 18+67.0
PIPE CULVERT, CLASS A, TY 2, 36" Ø, 64'
USFL = 654.76 (36.6' LT)
DSFL = 654.40 (27.4' RT)
CONC FLARED END SECTION 36" Ø, 2 EACH
TRENCH BACKFILL, 23.4 CU YD

45— STA 21+35.0
DOUBLE PIPE CULVERT, CLASS A, TY 2, 60" Ø, 70'
USFL = 653.59 (30.8' LT)
DSFL = 653.14 (39.2' RT)
CAST-IN-PLACE REINFORCED CONCRETE FLARED END SECTIONS,
(SEE DETAILS SHEETS 261c-261d)
TRENCH BACKFILL, 57.4 CU YD

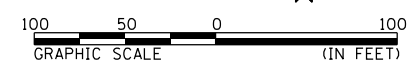
PARCEL NO 6069115
JAMES L. OVERHOLT

PARCEL NO 6069114
EPLEY FAMILY LIMITED PARTNERSHIP

PARCEL NO 6069113
THE SWIM FAMILY REVOCABLE LIVING TRUST,
DAVID T. DORN, SR., DAVID T. DORN, JR.,
JANET DORN AND ANN DORN

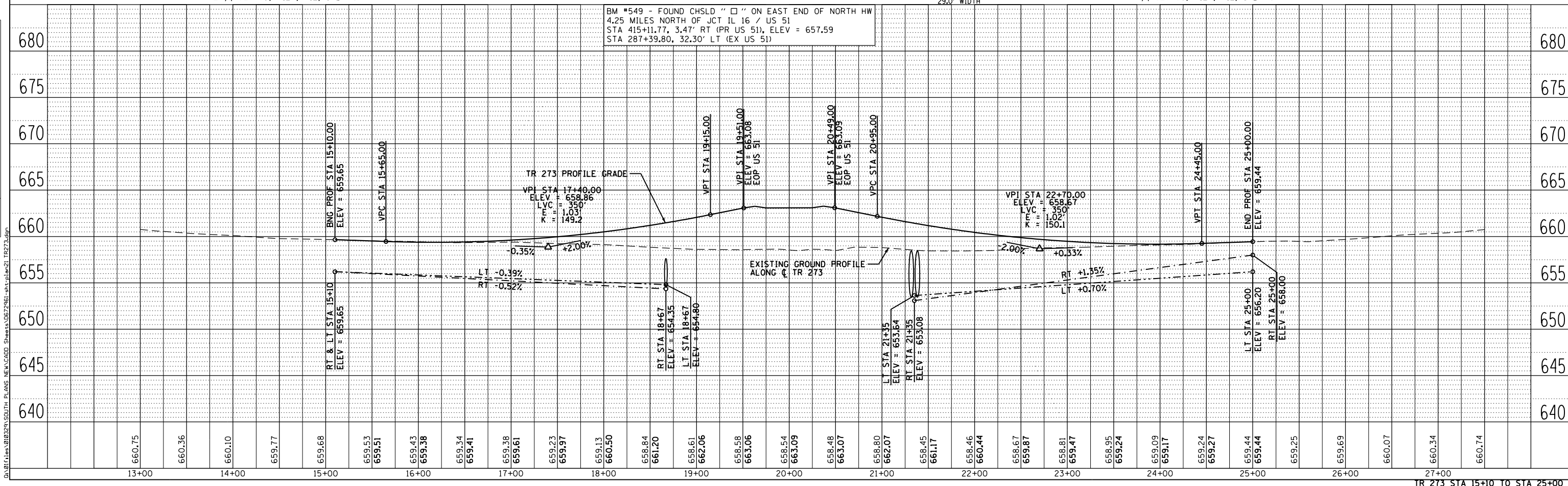
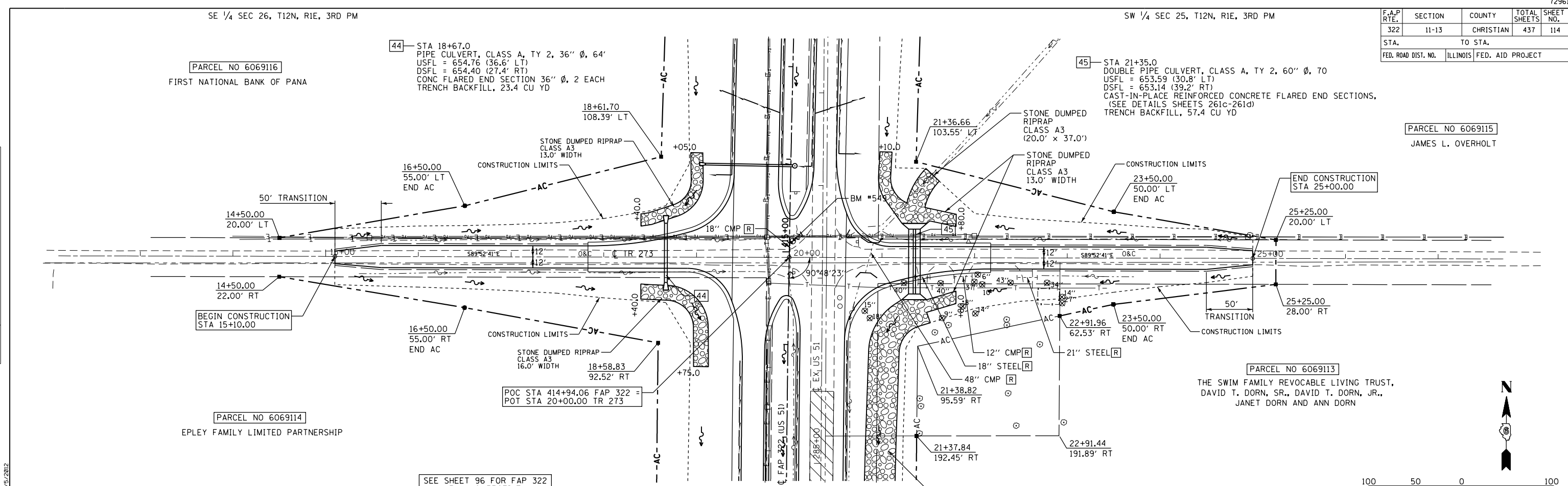
NE 1/4 SEC 35, T12N, R1E, 3RD PM

NW 1/4 SEC 36, T12N, R1E, 3RD PM



PLAN	DATE
BY	
NO.	

PROFILE	DATE
BY	
NO.	



BM #549 - FOUND CHSLD " " ON EAST END OF NORTH HW
4.25 MILES NORTH OF JCT IL 16 / US 51
STA 415+11.77, 3.47' RT (PR US 51), ELEV = 657.59
STA 287+39.80, 32.30' LT (EX US 51)

TR 273 PROFILE GRADE
VPI STA 17+40.00
ELEV = 658.86
LVC = 350'
K = 1.03
K = 149.2

VPI STA 22+70.00
ELEV = 658.67
LVC = 350'
K = 1.02
K = 150.1

TR 273 STA 15+10 TO STA 25+00