

STATE OF ILLINOIS
DEPARTMENT OF TRANSPORTATION

F.A.P. RTE.	SECTION	COUNTY	TOTAL SHEETS	SHEET NO.
322	11-1	CHRISTIAN	437	120
STA.		TO STA.		
FED. ROAD DIST. NO.		ILLINOIS	FED. AID PROJECT	

NE 1/4 SEC 2, T11N, R1E, 3RD PM

PARCEL NO 6069104
EPLEY FAMILY FARM LIMITED PARTNERSHIP
MARY JANE ERISMAN
DOUGLAS FAMILY LIMITED PARTNERSHIP

PARCEL NO 6069108 A, B & TE
THE FIRST NATIONAL BANK OF PANAMA

TOTAL AREA = 94.920 ACRES
REQUIRED ROW AREA A = 3.667 ACRES
EXISTING ROW AREA A = 4.633 ACRES
TOTAL ROW AREA A = 8.300 ACRES

REQUIRED ROW AREA B = 0.548 ACRES
EXISTING ROW AREA B = 0.012 ACRES
TOTAL ROW AREA B = 0.560 ACRES

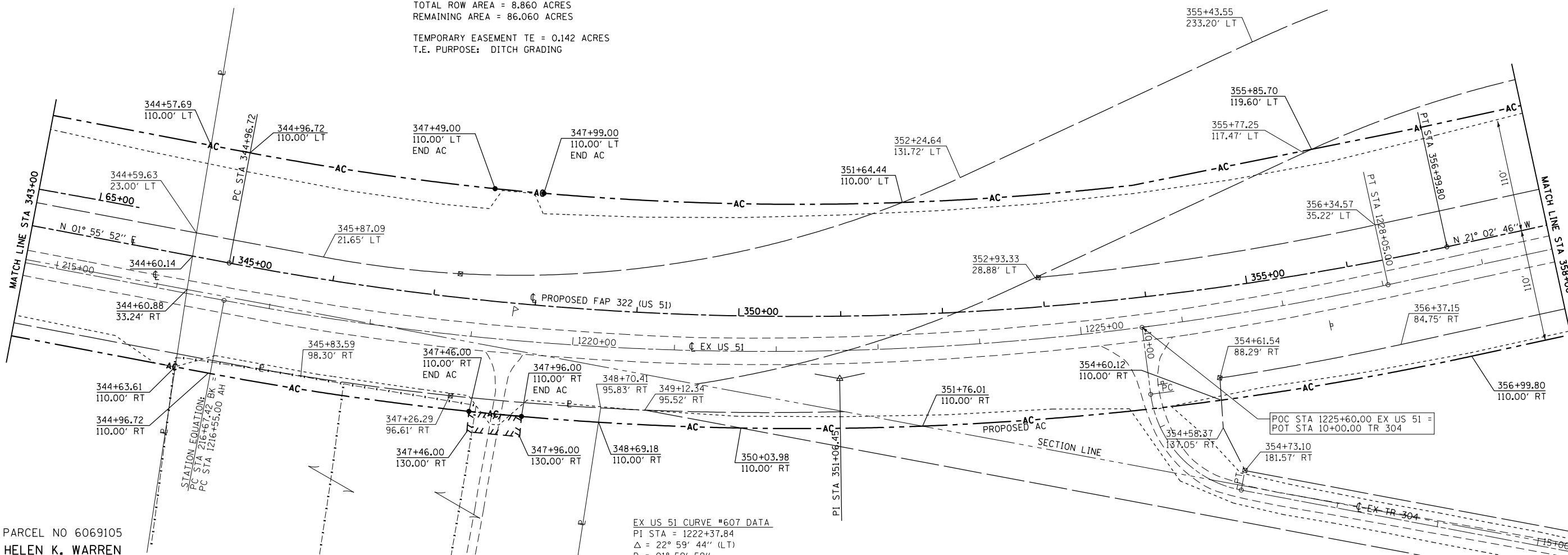
TOTAL ROW AREA = 8.860 ACRES
REMAINING AREA = 86.060 ACRES

TEMPORARY EASEMENT TE = 0.142 ACRES
T.E. PURPOSE: DITCH GRADING

FAP 322 CURVE SCA01 DATA

PI STA = 351+06.45
Δ = 22° 58' 38" (LT)
D = 01° 54' 35"
R = 3,000.00'
T = 609.73'
L = 1,203.08'
E = 61.34'
SE = 5.3%
PC STA = 344+96.72
PT STA = 356+99.80

SEE TABULATIONS ON SHEET 1



PARCEL NO 6069105
HELEN K. WARREN
JOAN W. McCracken
JAN McCracken ALEXANDER
SEE TABULATIONS ON SHEET 1

PARCEL NO 6069106 & TE
PAUL H. & LAURA S. FLEET

TOTAL AREA = 6.123 ACRES
REQUIRED ROW AREA = 0.122 ACRES
EXISTING ROW AREA = 0.000 ACRES
TOTAL ROW AREA = 0.122 ACRES
REMAINING AREA = 6.001 ACRES

TEMPORARY EASEMENT TE = 0.024 ACRES
T.E. PURPOSE: CONSTRUCT ENTRANCE

EX US 51 CURVE #607 DATA

PI STA = 1222+37.84
Δ = 22° 59' 44" (LT)
D = 01° 59' 59"
R = 2,865.34'
T = 582.84'
L = 1,150.00'
E = 58.68'
PC STA = 1216+55.00
PT STA = 1228+05.00

PARCEL NO 6069107 A & B
MICHAEL R. & SANDRA K. PINKSTON

TOTAL AREA = 65.931 ACRES
REQUIRED ROW AREA A = 0.031 ACRES
EXISTING ROW AREA A = 0.067 ACRES
TOTAL ROW AREA A = 0.098 ACRES

REQUIRED ROW AREA B = 0.017 ACRES
EXISTING ROW AREA B = 0.082 ACRES
TOTAL ROW AREA B = 0.099 ACRES

TOTAL ROW AREA = 0.197 ACRES
REMAINING AREA = 65.734 ACRES

EX TR 304 CURVE DATA

PI STA = 11+46.21
Δ = 72° 02' 27" (LT)
D = 52° 05' 38"
R = 109.99'
T = 79.97'
L = 138.29'
E = 26.00'
PC STA = 10+66.24
PT STA = 12+04.53

NOTES:
BEARINGS ARE BASED ON THE ILLINOIS STATE PLANE
COORDINATE SYSTEM, NAD83 1986 - WEST ZONE
SURVEYED IN ENGLISH.

PLAT DISTANCES AND STATIONING ARE IN GRID ENGLISH.
TO CONVERT TO GROUND DIVIDE BY GRID FACTOR.
GRID FACTOR = 1.00003150

NW 1/4 SEC 1, T11N, R1E, 3RD PM

RIGHT OF WAY PLANS

ROUTE F.A.P. 322 (US 51)
SECTION 11-1
PROJECT
COUNTY CHRISTIAN
JOB NO. R-96-008-95
STA 343+00 TO STA 358+00
SCALE 1" = 50'

